


Product datasheet

Anti-ALDH1A1 antibody ab9883

★★★★★ 2 Abreviews 9 References 3 Images

Overview

Product name	Anti-ALDH1A1 antibody
Description	Goat polyclonal to ALDH1A1
Host species	Goat
Specificity	This antibody may cross-react with ALDH1A2 (GeneID 8854) with one residue difference from this design and with ALDH2 (GeneID 217) with two residues difference from this design. Please note that ALDH1A2 is known to be alternatively spliced under some conditions (37kDa) (2).
Tested applications	Suitable for: IHC-Fr, WB, IHC-P Unsuitable for: ICC
Species reactivity	Reacts with: Mouse, Rat, Dog, Human Predicted to work with: Cow 
Immunogen	Synthetic peptide: EVKTVTVKISQKNS, corresponding to C terminal amino acids 488-501 of Human Aldehyde Dehydrogenase 1. Run BLAST with ExPASy Run BLAST with NCBI
Positive control	Human liver lysates.
General notes	A protease inhibitor that inhibits fibrin clot formation.

Properties

Form	Liquid
Storage instructions	Shipped at 4°C. Upon delivery aliquot and store at -20°C or -80°C. Avoid repeated freeze / thaw cycles.
Storage buffer	pH: 7.30 Preservative: 0.02% Sodium azide Constituents: 99% Tris buffered saline, 0.5% BSA
Purity	Immunogen affinity purified
Purification notes	Purified from goat serum by ammonium sulphate precipitation followed by antigen affinity chromatography using the immunizing peptide.
Primary antibody notes	A protease inhibitor that inhibits fibrin clot formation.
Clonality	Polyclonal

Isotype

IgG

Applications

Our [Abpromise guarantee](#) covers the use of **ab9883** in the following tested applications.

The application notes include recommended starting dilutions; optimal dilutions/concentrations should be determined by the end user.

Application	Abreviews	Notes
IHC-Fr		Use at an assay dependent concentration. PubMed: 18560594
WB	★★★★★	Use a concentration of 0.3 - 1 µg/ml. Predicted molecular weight: 55 kDa. Can be blocked with Human ALDH1A1 peptide (ab23169) .
IHC-P		Use a concentration of 5 µg/ml.

Application notes Is unsuitable for ICC.

Target

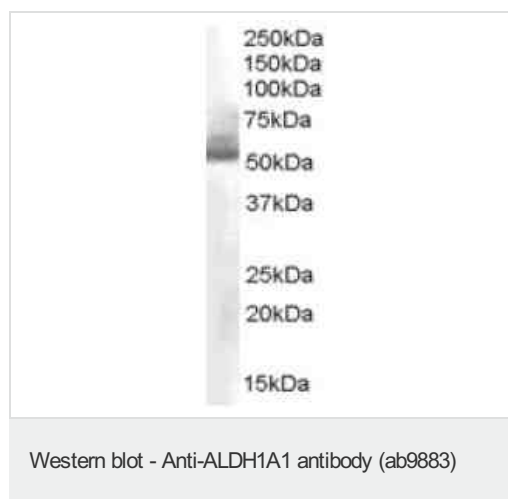
Function Binds free retinal and cellular retinol-binding protein-bound retinal. Can convert/oxidize retinaldehyde to retinoic acid.

Pathway Cofactor metabolism; retinol metabolism.

Sequence similarities Belongs to the aldehyde dehydrogenase family.

Cellular localization Cytoplasm.

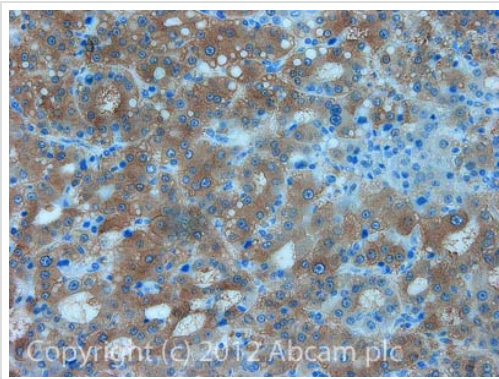
Images



Anti-ALDH1A1 antibody (ab9883) at 0.03 µg/ml + Human Liver lysate (RIPA buffer, 35µg total protein per lane).

Predicted band size: 55 kDa

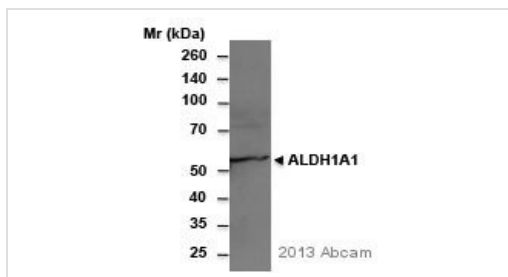
Primary incubated for 1 hour. Detected by western blot using chemiluminescence.



Immunohistochemistry (Formalin/PFA-fixed paraffin-embedded sections) - Anti-ALDH1A1 antibody (ab9883)

IHC image of ab9883 staining in Human liver carcinoma formalin fixed paraffin embedded tissue section, performed on a Leica Bond™ system using the standard protocol B. The section was pre-treated using heat mediated antigen retrieval with sodium citrate buffer (pH6, epitope retrieval solution 1) for 20 mins. The section was then incubated with ab9883, 5µg/ml, for 15 mins at room temperature and detected using an HRP conjugated compact polymer system. DAB was used as the chromogen. The section was then counterstained with haematoxylin and mounted with DPX.

For other IHC staining systems (automated and non-automated) customers should optimize variable parameters such as antigen retrieval conditions, primary antibody concentration and antibody incubation times.



Western blot - Anti-ALDH1A1 antibody (ab9883)
This image is courtesy of an anonymous Abreview

Anti-ALDH1A1 antibody (ab9883) at 1/500 dilution + MDBK cell lysate at 100 µg

Secondary

HRP-conjugated Donkey anti-goat IgG

Predicted band size: 55 kDa

Please note: All products are "FOR RESEARCH USE ONLY AND ARE NOT INTENDED FOR DIAGNOSTIC OR THERAPEUTIC USE"

Our Abpromise to you: Quality guaranteed and expert technical support

- Replacement or refund for products not performing as stated on the datasheet
- Valid for 12 months from date of delivery
- Response to your inquiry within 24 hours
- We provide support in Chinese, English, French, German, Japanese and Spanish
- Extensive multi-media technical resources to help you
- We investigate all quality concerns to ensure our products perform to the highest standards

If the product does not perform as described on this datasheet, we will offer a refund or replacement. For full details of the Abpromise, please visit <https://www.abcam.com/abpromise> or contact our technical team.

Terms and conditions

- Guarantee only valid for products bought direct from Abcam or one of our authorized distributors