


Product datasheet

Anti-ALDH1L2 antibody - C-terminal ab170176

1 References 2 Images

Overview

<b>Product name</b>	Anti-ALDH1L2 antibody - C-terminal
<b>Description</b>	Rabbit polyclonal to ALDH1L2 - C-terminal
<b>Host species</b>	Rabbit
<b>Tested applications</b>	<b>Suitable for:</b> IHC-P, WB
<b>Species reactivity</b>	<b>Reacts with:</b> Mouse <b>Predicted to work with:</b> Human 
<b>Immunogen</b>	Synthetic peptide within Human ALDH1L2 aa 750-780 (C terminal) conjugated to Keyhole Limpet Haemocyanin (KLH). The exact sequence is proprietary. Database link: <a href="#">Q3SY69</a>
<b>Positive control</b>	NIH 3T3 cell lysate; mouse heart tissue.

Properties

<b>Form</b>	Liquid
<b>Storage instructions</b>	Shipped at 4°C. Store at +4°C short term (1-2 weeks). Upon delivery aliquot. Store at -20°C long term. Avoid freeze / thaw cycle.
<b>Storage buffer</b>	Preservative: 0.09% Sodium azide Constituent: 99% PBS
<b>Purity</b>	Immunogen affinity purified
<b>Purification notes</b>	ab170176 is purified through a protein A column, followed by peptide affinity purification
<b>Clonality</b>	Polyclonal
<b>Isotype</b>	IgG

Applications

Our [Abpromise guarantee](#) covers the use of **ab170176** in the following tested applications.

The application notes include recommended starting dilutions; optimal dilutions/concentrations should be determined by the end user.

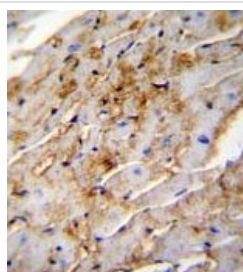
Application	Abreviews	Notes
IHC-P		1/50 - 1/100. Perform heat mediated antigen retrieval with citrate buffer pH 6 before commencing with IHC staining protocol.
WB		1/100 - 1/500. Predicted molecular weight: 102 kDa.

## Target

### Sequence similarities

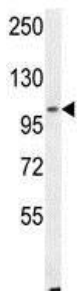
In the N-terminal section; belongs to the GART family.  
 In the C-terminal section; belongs to the aldehyde dehydrogenase family. ALDH1L subfamily.  
 Contains 1 acyl carrier domain.

## Images



Immunohistochemical analysis of formalin-fixed, paraffin-embedded mouse heart tissue labeling ALDH1L2 with ab170176 at 1/50 dilution, followed by a peroxidase conjugated secondary antibody and DAB staining.

Immunohistochemistry (Formalin/PFA-fixed paraffin-embedded sections) - Anti-ALDH1L2 antibody - C-terminal (ab170176)



Anti-ALDH1L2 antibody - C-terminal (ab170176) at 1/100 dilution + NIH 3T3 cell lysate at 35 µg

**Predicted band size:** 102 kDa

Western blot - Anti-ALDH1L2 antibody - C-terminal (ab170176)

**Please note:** All products are "FOR RESEARCH USE ONLY. NOT FOR USE IN DIAGNOSTIC PROCEDURES"

## Our Abpromise to you: Quality guaranteed and expert technical support

- Replacement or refund for products not performing as stated on the datasheet

- Valid for 12 months from date of delivery
- Response to your inquiry within 24 hours
  
- We provide support in Chinese, English, French, German, Japanese and Spanish
- Extensive multi-media technical resources to help you
- We investigate all quality concerns to ensure our products perform to the highest standards

If the product does not perform as described on this datasheet, we will offer a refund or replacement. For full details of the Abpromise, please visit <https://www.abcam.com/abpromise> or contact our technical team.

### **Terms and conditions**

---

- Guarantee only valid for products bought direct from Abcam or one of our authorized distributors