

Product datasheet

Anti-ALDH2 antibody [EPR4494] ab133306

KO VALIDATED Recombinant RabMAb

[1 References](#) [3 Images](#)

Overview

Product name	Anti-ALDH2 antibody [EPR4494]
Description	Rabbit monoclonal [EPR4494] to ALDH2
Host species	Rabbit
Specificity	The antibody immunogen has 87% homology with ALDH1A2 (O94788) and ALDH1A1 (P00352). Therefore a cross-reactivity with these proteins is likely.
Tested applications	Suitable for: WB Unsuitable for: Flow Cyt, ICC/IF or IHC-P
Species reactivity	Reacts with: Mouse, Rat, Human
Immunogen	Synthetic peptide. This information is proprietary to Abcam and/or its suppliers.
Positive control	WB: SW480 and HepG2 cell lysates; Human heart, fetal liver, mouse liver, rat liver, and mouse lung lysates.
General notes	This product is a recombinant monoclonal antibody, which offers several advantages including: <ul style="list-style-type: none"> - High batch-to-batch consistency and reproducibility - Improved sensitivity and specificity - Long-term security of supply - Animal-free production For more information see here . Our RabMAb [®] technology is a patented hybridoma-based technology for making rabbit monoclonal antibodies. For details on our patents, please refer to RabMAb[®] patents .

Properties

Form	Liquid
Storage instructions	Shipped at 4°C. Upon delivery aliquot and store at -20°C. Avoid repeated freeze / thaw cycles.
Storage buffer	pH: 7.2 Preservative: 0.05% Sodium azide Constituents: 0.1% BSA, 40% Glycerol (glycerin, glycerine), 9.85% Tris glycine, 50% Tissue culture supernatant
Purity	Tissue culture supernatant
Clonality	Monoclonal

Clone number EPR4494

Isotype IgG

Applications

The Abpromise guarantee Our [Abpromise guarantee](#) covers the use of ab133306 in the following tested applications. The application notes include recommended starting dilutions; optimal dilutions/concentrations should be determined by the end user.

Application	Abreviews	Notes
WB		1/1000 - 1/10000. Predicted molecular weight: 56 kDa.

Application notes Is unsuitable for Flow Cyt, ICC/IF or IHC-P.

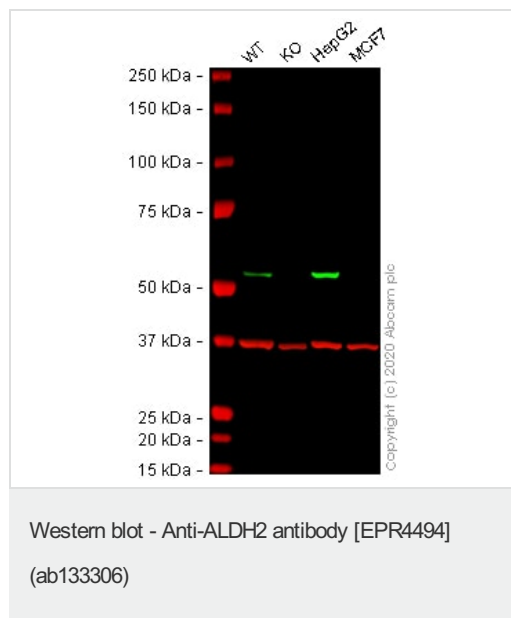
Target

Pathway Alcohol metabolism; ethanol degradation; acetate from ethanol: step 2/2.

Sequence similarities Belongs to the aldehyde dehydrogenase family.

Cellular localization Mitochondrion matrix.

Images



All lanes : Anti-ALDH2 antibody [EPR4494] (ab133306) at 1/1000 dilution

Lane 1 : Wild-type SW480 cell lysate

Lane 2 : ALDH2 knockout SW480 cell lysate

Lane 3 : HepG2 cell lysate

Lane 4 : MCF7 cell lysate

Lysates/proteins at 20 µg per lane.

Performed under reducing conditions.

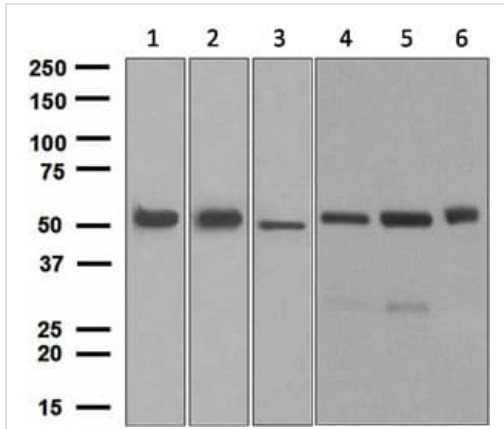
Predicted band size: 56 kDa

Observed band size: 53 kDa

Lanes 1 - 4: Merged signal (red and green). Green - ab133306 observed at 53 kDa. Red - loading control, [ab8245](#) (Mouse anti-GAPDH antibody [6C5]) observed at 37kDa.

ab133306 was shown to react with ALDH2 in wild-type SW480

cells in western blot. Loss of signal was observed when ALDH2 knockout sample was used. Wild-type and ALDH2 knockout cell lysates were subjected to SDS-PAGE. Membranes were blocked in 3% milk before incubation with ab133306 and ab8245 (Mouse anti-GAPDH antibody [6C5]) overnight at 4°C at a 1 in 1000 Dilution and a 1 in 20000 dilution respectively. Blots were incubated with Goat anti-Rabbit IgG H&L (IRDye® 800CW) preabsorbed (ab216773) and Goat anti-Mouse IgG H&L (IRDye® 680RD) preabsorbed (ab216776) secondary antibodies at 1 in 20000 dilution for 1 hour at room temperature before imaging.



Western blot - Anti-ALDH2 antibody [EPR4494] (ab133306)

All lanes : Anti-ALDH2 antibody [EPR4494] (ab133306) at 1/1000 dilution

Lane 1 : HepG2 lysates

Lane 2 : Human heart lysates

Lane 3 : Fetal liver lysates

Lane 4 : Mouse liver lysates

Lane 5 : Rat liver lysates

Lane 6 : Mouse lung lysates

Lysates/proteins at 10 µg per lane.

Secondary

All lanes : HRP labelled goat anti-rabbit at 1/2000 dilution

Predicted band size: 56 kDa

Why choose a recombinant antibody?

Research with confidence
Consistent and reproducible results

Long-term and scalable supply
Recombinant technology

Success from the first experiment
Confirmed specificity

Ethical standards compliant
Animal-free production

Anti-ALDH2 antibody [EPR4494] (ab133306)

Please note: All products are "FOR RESEARCH USE ONLY. NOT FOR USE IN DIAGNOSTIC PROCEDURES"

Our Abpromise to you: Quality guaranteed and expert technical support

- Replacement or refund for products not performing as stated on the datasheet
- Valid for 12 months from date of delivery
- Response to your inquiry within 24 hours

- We provide support in Chinese, English, French, German, Japanese and Spanish
- Extensive multi-media technical resources to help you
- We investigate all quality concerns to ensure our products perform to the highest standards

If the product does not perform as described on this datasheet, we will offer a refund or replacement. For full details of the Abpromise, please visit <https://www.abcam.com/abpromise> or contact our technical team.

Terms and conditions

- Guarantee only valid for products bought direct from Abcam or one of our authorized distributors