

Product datasheet

Anti-ALDH3A1 antibody [EPR7405] ab128902

Recombinant RabMAb

3 Images

Overview

Product name	Anti-ALDH3A1 antibody [EPR7405]
Description	Rabbit monoclonal [EPR7405] to ALDH3A1
Host species	Rabbit
Tested applications	Suitable for: WB Unsuitable for: Flow Cyt or ICC/IF
Species reactivity	Reacts with: Human
Immunogen	Synthetic peptide within Human ALDH3A1 aa 50-150. The exact sequence is proprietary.
Positive control	WB: A549 cell lysate.
General notes	<p>This product is a recombinant monoclonal antibody, which offers several advantages including:</p> <ul style="list-style-type: none">- High batch-to-batch consistency and reproducibility- Improved sensitivity and specificity- Long-term security of supply- Animal-free production <p>For more information see here.</p> <p>Our RabMAb[®] technology is a patented hybridoma-based technology for making rabbit monoclonal antibodies. For details on our patents, please refer to RabMAb[®] patents.</p> <p>We are constantly working hard to ensure we provide our customers with best in class antibodies. As a result of this work we are pleased to now offer this antibody in purified format. We are in the process of updating our datasheets. The purified format is designated 'PUR' on our product labels. If you have any questions regarding this update, please contact our Scientific Support team.</p> <p>Mouse, Rat: We have preliminary internal testing data to indicate this antibody may not react with these species. Please contact us for more information.</p>

Properties

Form	Liquid
Storage instructions	Shipped at 4°C. Store at +4°C short term (1-2 weeks). Upon delivery aliquot. Store at -20°C long term. Avoid freeze / thaw cycle.
Storage buffer	pH: 7.20

Preservative: 0.01% Sodium azide
Constituents: 59% PBS, 40% Glycerol (glycerin, glycerine), 0.05% BSA

Purity Protein A purified
Clonality Monoclonal
Clone number EPR7405
Isotype IgG

Applications

The Abpromise guarantee Our **Abpromise guarantee** covers the use of ab128902 in the following tested applications. The application notes include recommended starting dilutions; optimal dilutions/concentrations should be determined by the end user.

Application	Abreviews	Notes
WB		1/1000 - 1/10000. Detects a band of approximately 50 kDa (predicted molecular weight: 50 kDa).

Application notes Is unsuitable for Flow Cyt or ICC/IF.

Target

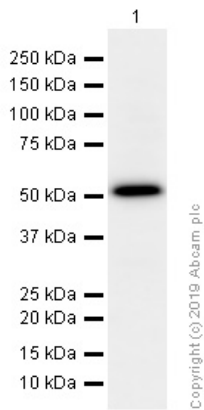
Function ALDHs play a major role in the detoxification of alcohol-derived acetaldehyde. They are involved in the metabolism of corticosteroids, biogenic amines, neurotransmitters, and lipid peroxidation. This protein preferentially oxidizes aromatic aldehyde substrates. It may play a role in the oxidation of toxic aldehydes.

Tissue specificity High levels in stomach, esophagus and lung; low level in the liver and kidney.

Sequence similarities Belongs to the aldehyde dehydrogenase family.

Cellular localization Cytoplasm.

Images



Western blot - Anti-ALDH3A1 antibody [EPR7405]
(ab128902)

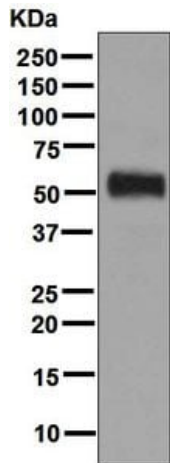
Anti-ALDH3A1 antibody [EPR7405] (ab128902) at 1/5000 dilution
(Purified) + A549 (Human lung carcinoma epithelial cell) whole cell
lysate at 15 µg

Secondary

Goat Anti-Rabbit IgG H&L (HRP) ([ab97051](#)) at 1/20000 dilution

Predicted band size: 50 kDa

Observed band size: 50 kDa



Western blot - Anti-ALDH3A1 antibody [EPR7405]
(ab128902)

Anti-ALDH3A1 antibody [EPR7405] (ab128902) at 1/1000 dilution
(unpurified) + A549 cell lysate at 10 µg



Secondary

Goat anti-Rabbit HRP at 1/2000 dilution

Developed using the ECL technique.

Predicted band size: 50 kDa

Why choose a recombinant antibody?

 Research with confidence Consistent and reproducible results	 Long-term and scalable supply Recombinant technology
 Success from the first experiment Confirmed specificity	 Ethical standards compliant Animal-free production

Anti-ALDH3A1 antibody [EPR7405] (ab128902)

Our Abpromise to you: Quality guaranteed and expert technical support

- Replacement or refund for products not performing as stated on the datasheet
- Valid for 12 months from date of delivery
- Response to your inquiry within 24 hours

- We provide support in Chinese, English, French, German, Japanese and Spanish
- Extensive multi-media technical resources to help you
- We investigate all quality concerns to ensure our products perform to the highest standards

If the product does not perform as described on this datasheet, we will offer a refund or replacement. For full details of the Abpromise, please visit <https://www.abcam.com/abpromise> or contact our technical team.

Terms and conditions

- Guarantee only valid for products bought direct from Abcam or one of our authorized distributors