



## Product datasheet

# Anti-ALDH7A1 antibody ab236663

5 Images

### Overview

<b>Product name</b>	Anti-ALDH7A1 antibody
<b>Description</b>	Rabbit polyclonal to ALDH7A1
<b>Host species</b>	Rabbit
<b>Tested applications</b>	<b>Suitable for:</b> ICC/IF, IP, IHC-P, WB
<b>Species reactivity</b>	<b>Reacts with:</b> Mouse, Rat, Human
<b>Immunogen</b>	<p>Recombinant fragment corresponding to Human ALDH7A1 aa 386-515. Sequence:</p> <p>EEAKKEGGTVVYGGKVMDRPGNYVEPTMTGLGHDASIAH TETFAPILYV FKFKNEEEVFAWNNEVKQGLSSSIFTKDLGRIFRWLGPKG SDCGIVNVNI PTSGAEIGGAFGGGEKHTGGGRESGSDAWKQ</p> <p>Database link: <a href="#">P49419</a></p> <p style="text-align: right;">  <a href="#">Run BLAST with</a>                 <a href="#">Run BLAST with</a> </p>
<b>Positive control</b>	WB: HeLa, HepG2, HEK-293T and SH-SY5Y cell lysate; Rat liver and kidney lysate; Mouse liver and kidney lysate. IHC-P: Human kidney and liver tissue. ICC/IF: HeLa cells. IP: HeLa cell lysate.
<b>General notes</b>	<p>Reproducibility is key to advancing scientific discovery and accelerating scientists' next breakthrough.</p> <p>Abcam is leading the way with our range of recombinant antibodies, knockout-validated antibodies and knockout cell lines, all of which support improved reproducibility.</p> <p>We are also planning to innovate the way in which we present recommended applications and species on our product datasheets, so that only applications &amp; species that have been tested in our own labs, our suppliers or by selected trusted collaborators are covered by our Abpromise™ guarantee.</p> <p>In preparation for this, we have started to update the applications &amp; species that this product is Abpromise guaranteed for.</p> <p>We are also updating the applications &amp; species that this product has been “predicted to work with,” however this information is not covered by our Abpromise guarantee.</p> <p>Applications &amp; species from publications and Abreviews that have not been tested in our own labs or in those of our suppliers are not covered by the Abpromise guarantee.</p> <p>Please check that this product meets your needs before purchasing. If you have any questions,</p>

special requirements or concerns, please send us an inquiry and/or contact our Support team ahead of purchase. Recommended alternatives for this product can be found below, as well as customer reviews and Q&As.

## Properties

---

<b>Form</b>	Liquid
<b>Storage instructions</b>	Shipped at 4°C. Store at +4°C short term (1-2 weeks). Upon delivery aliquot. Store at -20°C long term. Avoid freeze / thaw cycle.
<b>Storage buffer</b>	pH: 7.40 Constituents: PBS, 50% Glycerol (glycerin, glycerine), 0.03% Proclin 300
<b>Purity</b>	Protein G purified
<b>Purification notes</b>	Purity >95%.
<b>Clonality</b>	Polyclonal
<b>Isotype</b>	IgG

## Applications

---

Our [Abpromise guarantee](#) covers the use of **ab236663** in the following tested applications.

The application notes include recommended starting dilutions; optimal dilutions/concentrations should be determined by the end user.

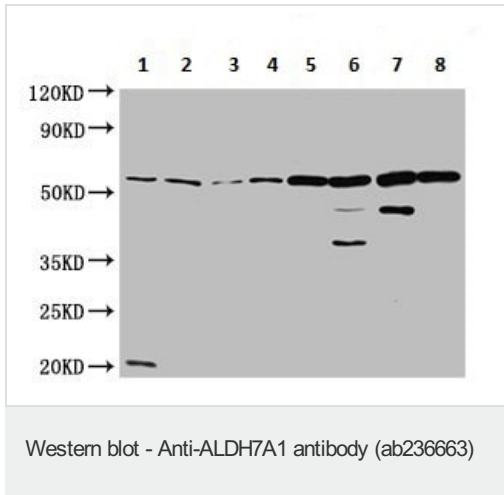
Application	Abreviews	Notes
ICC/IF		1/50 - 1/200.
IP		1/200 - 1/2000.
IHC-P		1/200 - 1/500.
WB		1/500 - 1/5000.

## Target

---

## Images

---



**All lanes :** Anti-ALDH7A1 antibody (ab236663) at 1/500 dilution

**Lane 1 :** HeLa (human epithelial cell line from cervix adenocarcinoma) whole cell lysate

**Lane 2 :** HepG2 (human liver hepatocellular carcinoma cell line) whole cell lysate

**Lane 3 :** HEK-293T (human epithelial cell line from embryonic kidney transformed with large T antigen) whole cell lysate

**Lane 4 :** SH-SY5Y (human neuroblastoma cell line from bone marrow) whole cell lysate

**Lane 5 :** Rat liver lysate

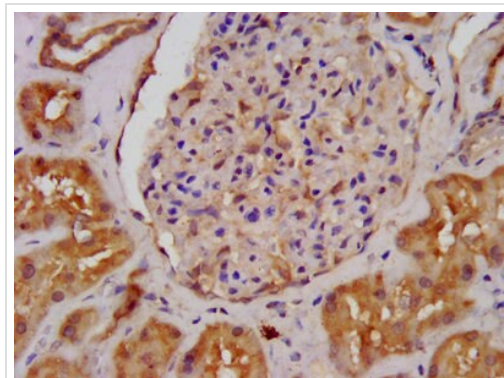
**Lane 6 :** Rat kidney lysate

**Lane 7 :** Mouse liver lysate

**Lane 8 :** Mouse kidney lysate

### Secondary

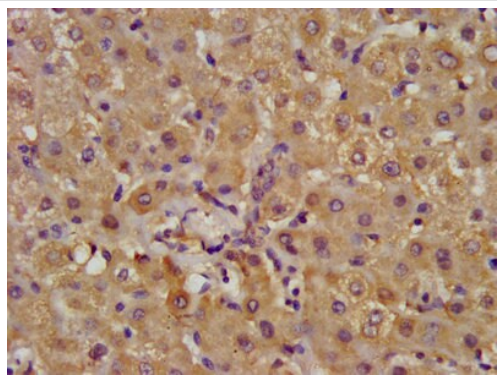
**All lanes :** Goat polyclonal to rabbit IgG at 1/50000 dilution



Immunohistochemistry (Formalin/PFA-fixed paraffin-embedded sections) - Anti-ALDH7A1 antibody (ab236663)

Paraffin-embedded human kidney tissue stained for ALDH7A1 using ab236663 at 1/400 dilution in immunohistochemical analysis.

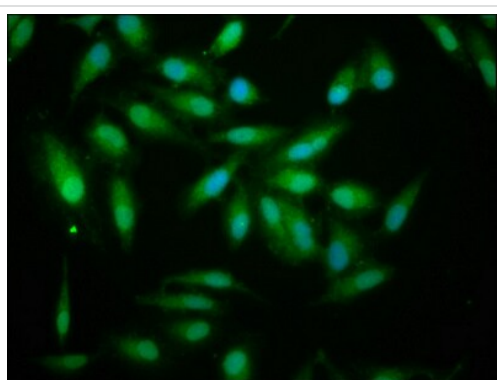
After dewaxing and hydration, antigen retrieval was mediated by high pressure in a citrate buffer (pH 6.0). Section was blocked with 10% normal goat serum 30 minutes at RT. Then primary antibody (1% BSA) was incubated at 4°C overnight. The primary is detected by a biotinylated secondary antibody and visualized using an HRP conjugated SP system.



Immunohistochemistry (Formalin/PFA-fixed paraffin-embedded sections) - Anti-ALDH7A1 antibody (ab236663)

Paraffin-embedded human liver tissue stained for ALDH7A1 using ab236663 at 1/400 dilution in immunohistochemical analysis.

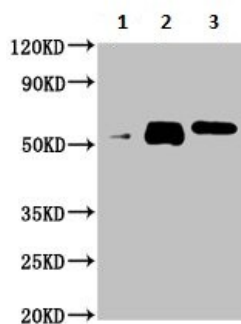
After dewaxing and hydration, antigen retrieval was mediated by high pressure in a citrate buffer (pH 6.0). Section was blocked with 10% normal goat serum 30 minutes at RT. Then primary antibody (1% BSA) was incubated at 4°C overnight. The primary is detected by a biotinylated secondary antibody and visualized using an HRP conjugated SP system.



Immunocytochemistry/ Immunofluorescence - Anti-ALDH7A1 antibody (ab236663)

HeLa (human epithelial cell line from cervix adenocarcinoma) cells stained for ALDH7A1 using ab236663 at a dilution of 1/133 in ICC/IF.

The cells were fixed in 4% formaldehyde, permeabilized using 0.2% Triton X-100 and blocked in 10% normal goat serum. The cells were then incubated with the primary antibody overnight at 4°C. Secondary used is an Alexa-Fluor<sup>®</sup>488-conjugated Goat Anti-Rabbit IgG (H+L).



Immunoprecipitation - Anti-ALDH7A1 antibody (ab236663)

ALDH7A1 was immunoprecipitated from HeLa (human epithelial cell line from cervix adenocarcinoma) whole cell lysate using ab236663.

**Lane 1:** Rabbit control IgG instead of ab236663 in HeLa whole cell lysate.

**Lane 2:** 6 µg ab236663 IP in HeLa whole cell lysate.

**Lane 3:** HeLa whole cell lysate 20 µg (Input).

**Please note:** All products are "FOR RESEARCH USE ONLY. NOT FOR USE IN DIAGNOSTIC PROCEDURES"

### **Our Abpromise to you: Quality guaranteed and expert technical support**

---

- Replacement or refund for products not performing as stated on the datasheet
- Valid for 12 months from date of delivery
- Response to your inquiry within 24 hours
  
- We provide support in Chinese, English, French, German, Japanese and Spanish
- Extensive multi-media technical resources to help you
- We investigate all quality concerns to ensure our products perform to the highest standards

If the product does not perform as described on this datasheet, we will offer a refund or replacement. For full details of the Abpromise, please visit <https://www.abcam.com/abpromise> or contact our technical team.

### **Terms and conditions**

---

- Guarantee only valid for products bought direct from Abcam or one of our authorized distributors