

Product datasheet

Anti-Aldolase antibody [EPR9724(B)] ab169544

Recombinant RabMAb

★★★★☆ 3 Abreviews 4 References 3 Images

Overview

Product name	Anti-Aldolase antibody [EPR9724(B)]
Description	Rabbit monoclonal [EPR9724(B)] to Aldolase
Host species	Rabbit
Tested applications	Suitable for: Flow Cyt, WB Unsuitable for: ICC/IF or IHC-P
Species reactivity	Reacts with: Mouse, Rat, Human, Pig
Immunogen	Synthetic peptide within Human Aldolase aa 1-100. The exact sequence is proprietary. Database link: P04075
Positive control	WB: A549 and HeLa whole cell lysate (ab150035); human fetal brain, fetal liver and skeletal muscle, mouse brain, rat brain tissue lysates. FC: MCF7 cells.
General notes	Our RabMAb [®] technology is a patented hybridoma-based technology for making rabbit monoclonal antibodies. For details on our patents, please refer to RabMAb[®] patents . We are constantly working hard to ensure we provide our customers with best in class antibodies. As a result of this work we are pleased to now offer this antibody in purified format. We are in the process of updating our datasheets. The purified format is designated 'PUR' on our product labels. If you have any questions regarding this update, please contact our Scientific Support team. This product is a recombinant rabbit monoclonal antibody .

Properties

Form	Liquid
Storage instructions	Shipped at 4°C. Store at +4°C short term (1-2 weeks). Upon delivery aliquot. Store at -20°C long term. Avoid freeze / thaw cycle.
Storage buffer	Preservative: 0.01% Sodium azide Constituents: 40% Glycerol, 59% PBS, 0.05% BSA
Purity	Protein A purified
Clonality	Monoclonal
Clone number	EPR9724(B)

Isotype

IgG

Applications

Our [Abpromise guarantee](#) covers the use of **ab169544** in the following tested applications.

The application notes include recommended starting dilutions; optimal dilutions/concentrations should be determined by the end user.

Application	Abreviews	Notes
Flow Cyt		1/20.
WB	★★★★☆	1/1000 - 1/10000. Predicted molecular weight: 39 kDa.

Application notes

Is unsuitable for ICC/IF or IHC-P.

Target

Function

Plays a key role in glycolysis and gluconeogenesis. In addition, may also function as scaffolding protein.

Pathway

Carbohydrate degradation; glycolysis; D-glyceraldehyde 3-phosphate and glycerone phosphate from D-glucose: step 4/4.

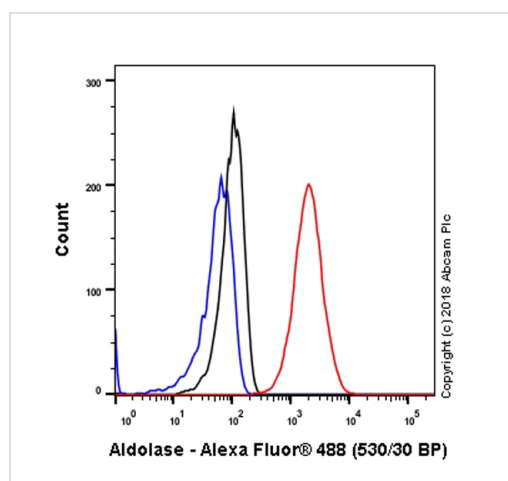
Involvement in disease

Defects in ALDOA are the cause of glycogen storage disease type 12 (GSD12) [MIM:611881]; also known as red cell aldolase deficiency. A metabolic disorder associated with increased hepatic glycogen and hemolytic anemia. It may lead to myopathy with exercise intolerance and rhabdomyolysis.

Sequence similarities

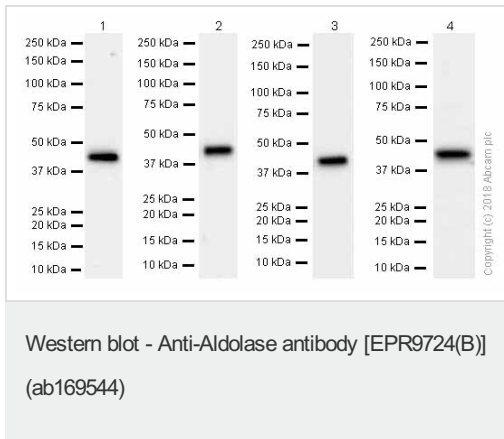
Belongs to the class I fructose-bisphosphate aldolase family.

Images



Flow Cytometry analysis of MCF7 (Human breast adenocarcinoma epithelial cell) cells labeling Aldolase with purified ab169544 at 1/20 dilution (10 µg/ml) (red). Cells were fixed with 4% Paraformaldehyde. A Goat anti rabbit IgG (Alexa Fluor® 488) secondary antibody was used at 1/2000 dilution. Isotype control - Rabbit monoclonal IgG (Black). Unlabeled control - Cell without incubation with primary antibody and secondary antibody (Blue).

Flow Cytometry - Anti-Aldolase antibody
[EPR9724(B)] (ab169544)



All lanes : Anti-Aldolase antibody [EPR9724(B)] (ab169544) at 0.02 µg/ml

Lane 1 : HeLa (Human cervix adenocarcinoma epithelial cell) whole cell lysates

Lane 2 : Mouse brain lysates

Lane 3 : Rat brain lysates

Lane 4 : Pig heart lysates

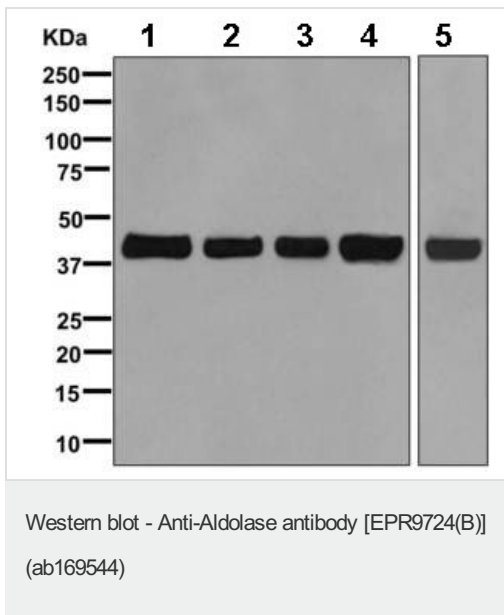
Lysates/proteins at 15 µg per lane.

Secondary

All lanes : Goat Anti-Rabbit IgG H&L (HRP) (ab97051) at 1/20000 dilution

Predicted band size: 39 kDa

Blocking and diluting buffer: 5% NFDm/TBST.



All lanes : Anti-Aldolase antibody [EPR9724(B)] (ab169544) at 1/1000 dilution (Unpurified)

Lane 1 : A549 lysate

Lane 2 : Fetal liver lysate

Lane 3 : HeLa lysate

Lane 4 : Fetal brain lysate

Lane 5 : Human skeletal muscle lysate

Lysates/proteins at 10 µg per lane.

Secondary

All lanes : HRP labeled goat anti-rabbit at 1/2000 dilution

Predicted band size: 39 kDa

Please note: All products are "FOR RESEARCH USE ONLY AND ARE NOT INTENDED FOR DIAGNOSTIC OR THERAPEUTIC USE"

Our Abpromise to you: Quality guaranteed and expert technical support

- Replacement or refund for products not performing as stated on the datasheet
- Valid for 12 months from date of delivery
- Response to your inquiry within 24 hours

- We provide support in Chinese, English, French, German, Japanese and Spanish
- Extensive multi-media technical resources to help you
- We investigate all quality concerns to ensure our products perform to the highest standards

If the product does not perform as described on this datasheet, we will offer a refund or replacement. For full details of the Abpromise, please visit <https://www.abcam.com/abpromise> or contact our technical team.

Terms and conditions

- Guarantee only valid for products bought direct from Abcam or one of our authorized distributors