


## Product datasheet

# Anti-Aldolase C antibody - Astrocyte Marker ab87122

★★★★☆ 1 Abreviews 3 References 2 Images

### Overview

---

<b>Product name</b>	Anti-Aldolase C antibody - Astrocyte Marker
<b>Description</b>	Rabbit polyclonal to Aldolase C - Astrocyte Marker
<b>Host species</b>	Rabbit
<b>Tested applications</b>	<b>Suitable for:</b> ICC/IF, WB
<b>Species reactivity</b>	<b>Reacts with:</b> Mouse, Rat, Human <b>Predicted to work with:</b> Cow, Chimpanzee, Monkey 
<b>Immunogen</b>	Synthetic peptide corresponding to Mouse Aldolase C aa 50-150 conjugated to keyhole limpet haemocyanin. (Peptide available as <a href="#">ab101304</a> )

### General notes

Reproducibility is key to advancing scientific discovery and accelerating scientists' next breakthrough.

Abcam is leading the way with our range of recombinant antibodies, knockout-validated antibodies and knockout cell lines, all of which support improved reproducibility.

We are also planning to innovate the way in which we present recommended applications and species on our product datasheets, so that only applications & species that have been tested in our own labs, our suppliers or by selected trusted collaborators are covered by our Abpromise™ guarantee.

In preparation for this, we have started to update the applications & species that this product is Abpromise guaranteed for.

We are also updating the applications & species that this product has been "predicted to work with," however this information is not covered by our Abpromise guarantee.

Applications & species from publications and Abreviews that have not been tested in our own labs or in those of our suppliers are not covered by the Abpromise guarantee.

Please check that this product meets your needs before purchasing. If you have any questions, special requirements or concerns, please send us an inquiry and/or contact our Support team ahead of purchase. Recommended alternatives for this product can be found below, as well as customer reviews and Q&As.

### Properties

---

<b>Form</b>	Liquid
<b>Storage instructions</b>	Shipped at 4°C. Store at +4°C short term (1-2 weeks). Upon delivery aliquot. Store at -20°C or -80°C. Avoid freeze / thaw cycle.
<b>Storage buffer</b>	pH: 7.40 Preservative: 0.02% Sodium azide Constituent: PBS
	Batches of this product that have a concentration < 1mg/ml may have BSA added as a stabilising agent. If you would like information about the formulation of a specific lot, please contact our scientific support team who will be happy to help.
<b>Purity</b>	Immunogen affinity purified
<b>Clonality</b>	Polyclonal
<b>Isotype</b>	IgG

## Applications

Our [Abpromise guarantee](#) covers the use of **ab87122** in the following tested applications.

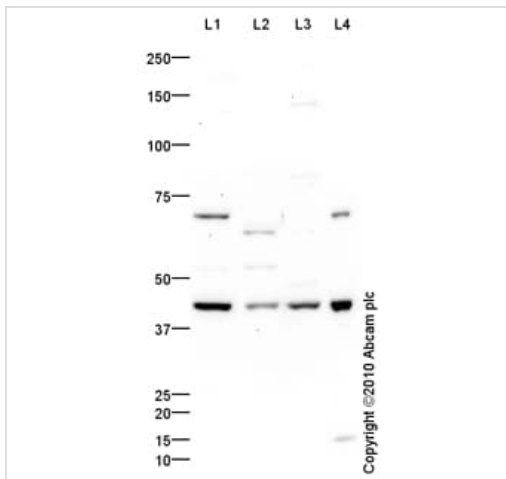
The application notes include recommended starting dilutions; optimal dilutions/concentrations should be determined by the end user.

Application	Abreviews	Notes
ICC/IF		Use a concentration of 10 µg/ml.
WB		Use a concentration of 1 µg/ml. Detects a band of approximately 44 kDa (predicted molecular weight: 39 kDa).

## Target

<b>Pathway</b>	Carbohydrate degradation; glycolysis; D-glyceraldehyde 3-phosphate and glycerone phosphate from D-glucose: step 4/4.
<b>Sequence similarities</b>	Belongs to the class I fructose-bisphosphate aldolase family.

## Images



Western blot - Anti-Aldolase C antibody - Astrocyte Marker (ab87122)

**All lanes** : Anti-Aldolase C antibody - Astrocyte Marker (ab87122) at 1 µg/ml

**Lane 1** : Brain (Mouse) Tissue Lysate

**Lane 2** : Skeletal Muscle (Mouse) Tissue Lysate

**Lane 3** : Jurkat (Human T cell lymphoblast-like cell line) Whole Cell Lysate

**Lane 4** : Cerebellum Rat Tissue Lysate

Lysates/proteins at 10 µg per lane.

### Secondary

**All lanes** : Goat polyclonal to Rabbit IgG - H&L - Pre-Adsorbed (HRP) at 1/3000 dilution

Developed using the ECL technique.

Performed under reducing conditions.

**Predicted band size:** 39 kDa

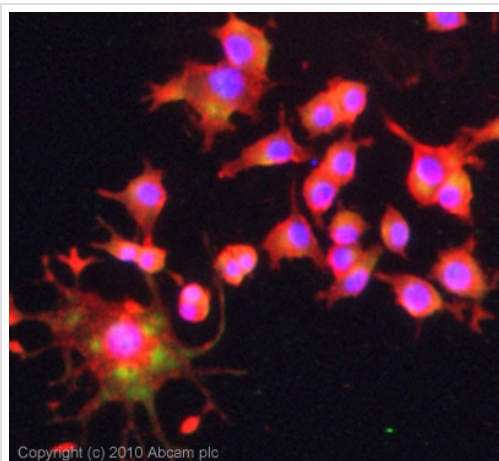
**Observed band size:** 44 kDa

[why is the actual band size different from the predicted?](#)

**Additional bands at:** 55 kDa, 71 kDa. We are unsure as to the identity of these extra bands.

**Exposure time:** 5 minutes

The 44 kDa band observed is comparable to the molecular weight seen with other commercially available antibodies to Mouse Fructose-bisphosphate aldolase C.



Immunocytochemistry/ Immunofluorescence - Anti-Aldolase C antibody - Astrocyte Marker (ab87122)

ICC/IF image of ab87122 stained PC12 cells. The cells were 4% PFA fixed (10 min) and then incubated in 1%BSA / 10% normal goat serum / 0.3M glycine in 0.1% PBS-Tween for 1h to permeabilise the cells and block non-specific protein-protein interactions. The cells were then incubated with the antibody (ab87122, 10µg/ml) overnight at +4°C. The secondary antibody (green) was Alexa Fluor® 488 goat anti-rabbit IgG (H+L) used at a 1/1000 dilution for 1h. Alexa Fluor® 594 WGA was used to label plasma membranes (red) at a 1/200 dilution for 1h. DAPI was used to stain the cell nuclei (blue) at a concentration of 1.43µM. This antibody also gave a positive result in 100% methanol fixed (5 min) PC12 cells at 10µg/ml.

**Please note:** All products are "FOR RESEARCH USE ONLY. NOT FOR USE IN DIAGNOSTIC PROCEDURES"

### Our Abpromise to you: Quality guaranteed and expert technical support

---

- Replacement or refund for products not performing as stated on the datasheet
- Valid for 12 months from date of delivery
- Response to your inquiry within 24 hours
- We provide support in Chinese, English, French, German, Japanese and Spanish
- Extensive multi-media technical resources to help you
- We investigate all quality concerns to ensure our products perform to the highest standards

If the product does not perform as described on this datasheet, we will offer a refund or replacement. For full details of the Abpromise, please visit <https://www.abcam.com/abpromise> or contact our technical team.

### Terms and conditions

---

- Guarantee only valid for products bought direct from Abcam or one of our authorized distributors