

## Product datasheet

# Alkaline Phosphatase Anti-S tag antibody ab133157

1 Image

### Overview

<b>Product name</b>	Alkaline Phosphatase Anti-S tag antibody
<b>Description</b>	Alkaline Phosphatase Rabbit polyclonal to S tag
<b>Host species</b>	Rabbit
<b>Conjugation</b>	Alkaline Phosphatase
<b>Tested applications</b>	<b>Suitable for:</b> WB, ELISA
<b>Species reactivity</b>	<b>Reacts with:</b> Species independent
<b>Immunogen</b>	S tag sequence KETAAAKFERQHMS

 [Run BLAST with](#)

 [Run BLAST with](#)

### General notes

The Life Science industry has been in the grips of a reproducibility crisis for a number of years. Abcam is leading the way in addressing the problem with our range of recombinant monoclonal antibodies and knockout edited cell lines for gold-standard validation.

One factor contributing to the crisis is the use of antibodies that are not suitable. This can lead to misleading results and the use of incorrect data informing project assumptions and direction. To help address this challenge, we have introduced an application and species grid on our primary antibody datasheets to make it easy to simplify identification of the right antibody for your needs.

Learn more [here](#).

### Properties

<b>Form</b>	Lyophilized: Prior to use, reconstitute to 1 mL with ddH <sub>2</sub> O, vortex gently and allow material to reconstitute for 20 minutes. Avoid exposure to heat. After product has been reconstituted, store at 2-8°C in the dark and use within 6 months. For extended storage, add an equal volume of glycerol (ACS grade) for a final concentration of 50%, and store at -20 degrees Celsius. Prepare a working dilution daily.
<b>Storage instructions</b>	Shipped at 4°C. Store at +4°C short term (1-2 weeks). Store at -20°C or -80°C. Avoid freeze / thaw cycle.
<b>Storage buffer</b>	pH: 7.40 Preservative: 0.013% Sodium azide Constituents: 0.3% Tris, 0.88% Sodium chloride, 0.047% Magnesium chloride, 0.0016% Zinc chloride

**Clonality** Polyclonal  
**Isotype** IgG

## Applications

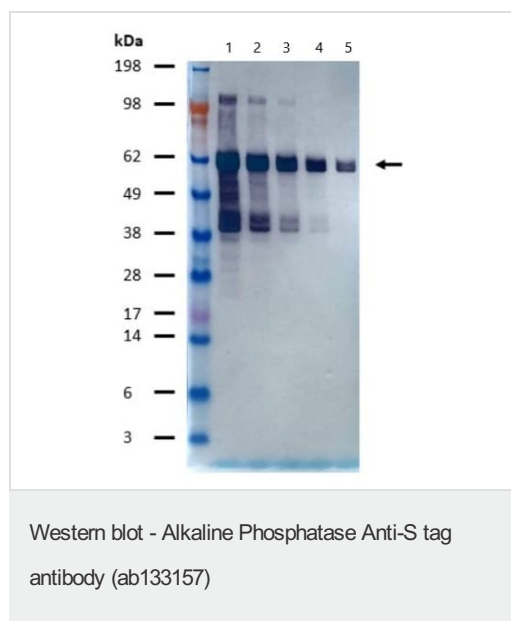
**The Abpromise guarantee** Our [Abpromise guarantee](#) covers the use of **ab133157** in the following tested applications. The application notes include recommended starting dilutions; optimal dilutions/concentrations should be determined by the end user.

Application	Abreviews	Notes
WB		1/5000 - 1/50000. Starting dilution: 1/2000
ELISA		1/5000 - 1/50000.

## Target

**Relevance** S tag is an epitope tag composed of a 15 residue peptide, KETAAKFERQHMS, derived from the pancreatic ribonuclease A.

## Images



**All lanes** : Alkaline Phosphatase Anti-S tag antibody (ab133157) at 1/10000 dilution

**Lane 1** : 60 kDa S-tagged protein at 0.3  $\mu$ g

**Lane 2** : 60 kDa S-tagged protein at 0.01  $\mu$ g

**Lane 3** : 60 kDa S-tagged protein at 0.03  $\mu$ g

**Lane 4** : 60 kDa S-tagged protein at 0.001  $\mu$ g

**Lane 5** : 60 kDa S-tagged protein at 0.003  $\mu$ g

Imaged using stabilized Alkaline Phosphatase substrate.

**Please note:** All products are "FOR RESEARCH USE ONLY. NOT FOR USE IN DIAGNOSTIC PROCEDURES"

## Our Abpromise to you: Quality guaranteed and expert technical support

- Replacement or refund for products not performing as stated on the datasheet
- Valid for 12 months from date of delivery
- Response to your inquiry within 24 hours

- We provide support in Chinese, English, French, German, Japanese and Spanish
- Extensive multi-media technical resources to help you
- We investigate all quality concerns to ensure our products perform to the highest standards

If the product does not perform as described on this datasheet, we will offer a refund or replacement. For full details of the Abpromise, please visit <https://www.abcam.com/abpromise> or contact our technical team.

### **Terms and conditions**

---

- Guarantee only valid for products bought direct from Abcam or one of our authorized distributors