


Product datasheet

# Anti-alpha 1 Fetoprotein antibody ab227800

2 Images

Overview

<b>Product name</b>	Anti-alpha 1 Fetoprotein antibody
<b>Description</b>	Rabbit polyclonal to alpha 1 Fetoprotein
<b>Host species</b>	Rabbit
<b>Tested applications</b>	<b>Suitable for:</b> IHC-P, WB
<b>Species reactivity</b>	<b>Reacts with:</b> Human <b>Predicted to work with:</b> Chimpanzee, Gorilla 
<b>Immunogen</b>	Full length native protein (purified) within Human alpha 1 Fetoprotein aa 1 to the C-terminus. The exact sequence is proprietary. (Purified from human cord serum). Database link: <a href="#">P02771</a>
<b>Positive control</b>	IHC-P: Human fetal liver tissue. WB: HepG2 whole cell lysate ( <a href="#">ab7900</a> ).

Properties

<b>Form</b>	Liquid
<b>Storage instructions</b>	Shipped at 4°C. Store at +4°C short term (1-2 weeks). Upon delivery aliquot. Store at -20°C long term. Avoid freeze / thaw cycle.
<b>Storage buffer</b>	pH: 7.6 Preservative: 0.1% Sodium azide Constituents: PBS, 1% BSA
<b>Purity</b>	Protein A/G purified
<b>Clonality</b>	Polyclonal
<b>Isotype</b>	IgG

Applications

Our [Abpromise guarantee](#) covers the use of **ab227800** in the following tested applications.

The application notes include recommended starting dilutions; optimal dilutions/concentrations should be determined by the end user.

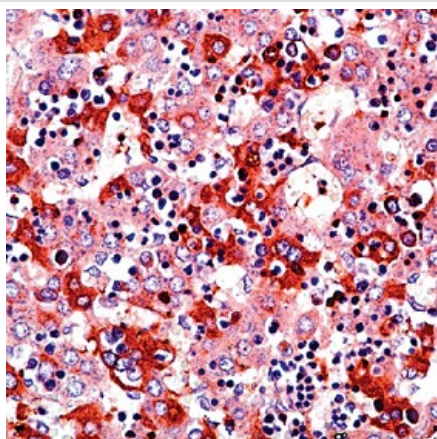
Application	Abreviews	Notes
-------------	-----------	-------

Application	Abreviews	Notes
IHC-P		1/200. Primary antibody incubation for 10 minutes at room temperature.
WB		1/25. Predicted molecular weight: 68 kDa. Primary antibody incubation for 1 hour at room temperature.

## Target

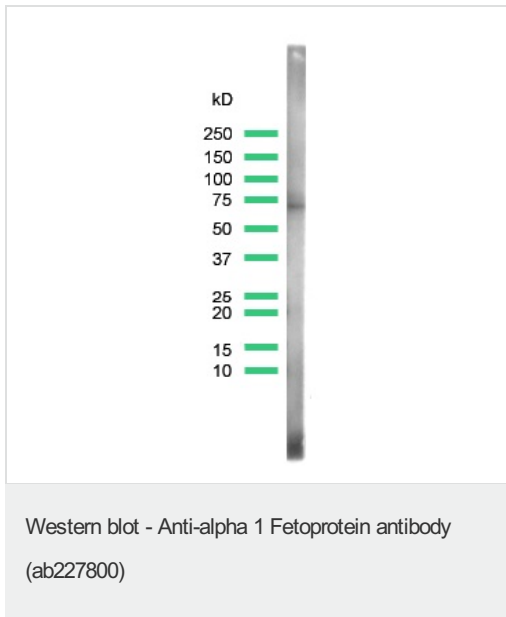
<b>Function</b>	Binds copper, nickel, and fatty acids as well as, and bilirubin less well than, serum albumin. Only a small percentage (less than 2%) of the human AFP shows estrogen-binding properties.
<b>Tissue specificity</b>	Plasma. Synthesized by the fetal liver and yolk sac.
<b>Sequence similarities</b>	Belongs to the ALB/AFP/VDB family. Contains 3 albumin domains.
<b>Developmental stage</b>	Occurs in the plasma of fetuses more than 4 weeks old, reaches the highest levels during the 12th-16th week of gestation, and drops to trace amounts after birth. The serum level in adults is usually less than 40 ng/ml. AFP occurs also at high levels in the plasma and ascitic fluid of adults with hepatoma.
<b>Post-translational modifications</b>	Independent studies suggest heterogeneity of the N-terminal sequence of the mature protein and of the cleavage site of the signal sequence. Sulfated.
<b>Cellular localization</b>	Secreted.

## Images



Formalin-fixed, paraffin-embedded human fetal liver tissue stained for alpha 1 Fetoprotein using ab227800 at 1/200 dilution in immunohistochemical analysis.

Immunohistochemistry (Formalin/PFA-fixed paraffin-embedded sections) - Anti-alpha 1 Fetoprotein antibody (ab227800)



Anti-alpha 1 Fetoprotein antibody (ab227800) at 1/25 dilution +  
HepG2 (human liver hepatocellular carcinoma cell line) cell lysate

**Predicted band size:** 68 kDa

**Please note:** All products are "FOR RESEARCH USE ONLY. NOT FOR USE IN DIAGNOSTIC PROCEDURES"

### Our Abpromise to you: Quality guaranteed and expert technical support

---

- Replacement or refund for products not performing as stated on the datasheet
- Valid for 12 months from date of delivery
- Response to your inquiry within 24 hours
- We provide support in Chinese, English, French, German, Japanese and Spanish
- Extensive multi-media technical resources to help you
- We investigate all quality concerns to ensure our products perform to the highest standards

If the product does not perform as described on this datasheet, we will offer a refund or replacement. For full details of the Abpromise, please visit <https://www.abcam.com/abpromise> or contact our technical team.

### Terms and conditions

---

- Guarantee only valid for products bought direct from Abcam or one of our authorized distributors