

Product datasheet

# Anti-alpha 1 Fetoprotein antibody [C3] - BSA and Azide free ab212320

1 Image

Overview

---

<b>Product name</b>	Anti-alpha 1 Fetoprotein antibody [C3] - BSA and Azide free
<b>Description</b>	Mouse monoclonal [C3] to alpha 1 Fetoprotein - BSA and Azide free
<b>Host species</b>	Mouse
<b>Specificity</b>	This antibody is highly specific to alpha 1 Fetoprotein and shows no cross-reaction with other oncofetal antigens or serum albumin. It may be useful in detecting hepatocellular carcinomas (HCC) and germ cell neoplasms, especially yolk sac tumors.
<b>Tested applications</b>	<b>Suitable for:</b> IHC-P
<b>Species reactivity</b>	<b>Reacts with:</b> Human, Pig, Monkey <b>Does not react with:</b> Mouse, Rat, Cow
<b>Immunogen</b>	Full length native protein (purified). Alpha 1 Fetoprotein purified from serum of a hepatoma patient. Database link: <a href="#">P02771</a>
<b>Positive control</b>	HepG2 cells; Human fetal liver or hepatocellular carcinoma tissues.
<b>General notes</b>	<p>Reproducibility is key to advancing scientific discovery and accelerating scientists' next breakthrough.</p> <p>Abcam is leading the way with our range of recombinant antibodies, knockout-validated antibodies and knockout cell lines, all of which support improved reproducibility.</p> <p>We are also planning to innovate the way in which we present recommended applications and species on our product datasheets, so that only applications &amp; species that have been tested in our own labs, our suppliers or by selected trusted collaborators are covered by our Abpromise™ guarantee.</p> <p>In preparation for this, we have started to update the applications &amp; species that this product is Abpromise guaranteed for.</p> <p>We are also updating the applications &amp; species that this product has been “predicted to work with,” however this information is not covered by our Abpromise guarantee.</p> <p>Applications &amp; species from publications and Abreviews that have not been tested in our own labs or in those of our suppliers are not covered by the Abpromise guarantee.</p> <p>Please check that this product meets your needs before purchasing. If you have any questions, special requirements or concerns, please send us an inquiry and/or contact our Support team ahead of purchase. Recommended alternatives for this product can be found below, as well as</p>

customer reviews and Q&As.

## Properties

---

<b>Form</b>	Liquid
<b>Storage instructions</b>	Shipped at 4°C. Store at +4°C short term (1-2 weeks). Upon delivery aliquot. Store at -20°C long term. Avoid freeze / thaw cycle.
<b>Storage buffer</b>	Constituent: 100% PBS
<b>Carrier free</b>	Yes
<b>Purity</b>	Protein A/G purified
<b>Clonality</b>	Monoclonal
<b>Clone number</b>	C3
<b>Isotype</b>	IgG2a
<b>Light chain type</b>	kappa

## Applications

---

Our [Abpromise guarantee](#) covers the use of **ab212320** in the following tested applications.

The application notes include recommended starting dilutions; optimal dilutions/concentrations should be determined by the end user.

Application	Abreviews	Notes
IHC-P		Use a concentration of 1 - 2 µg/ml. Perform heat mediated antigen retrieval with citrate buffer pH 6 before commencing with IHC staining protocol. for 30 minutes at RT

---

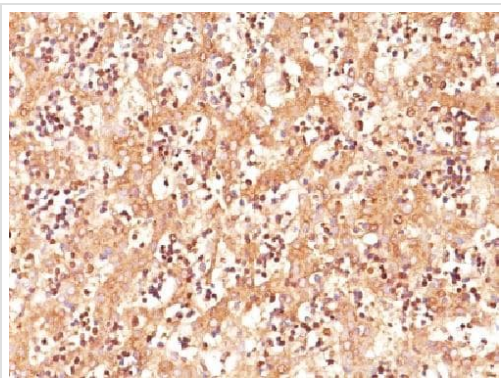
## Target

---

<b>Function</b>	Binds copper, nickel, and fatty acids as well as, and bilirubin less well than, serum albumin. Only a small percentage (less than 2%) of the human AFP shows estrogen-binding properties.
<b>Tissue specificity</b>	Plasma. Synthesized by the fetal liver and yolk sac.
<b>Sequence similarities</b>	Belongs to the ALB/AFP/VDB family. Contains 3 albumin domains.
<b>Developmental stage</b>	Occurs in the plasma of fetuses more than 4 weeks old, reaches the highest levels during the 12th-16th week of gestation, and drops to trace amounts after birth. The serum level in adults is usually less than 40 ng/ml. AFP occurs also at high levels in the plasma and ascitic fluid of adults with hepatoma.
<b>Post-translational modifications</b>	Independent studies suggest heterogeneity of the N-terminal sequence of the mature protein and of the cleavage site of the signal sequence. Sulfated.
<b>Cellular localization</b>	Secreted.

---

## Images



Immunohistochemical analysis of formalin-fixed, paraffin-embedded Human fetal liver tissue labeling alpha 1 Fetoprotein with ab212320 at 2µg/ml.

Immunohistochemistry (Formalin/PFA-fixed paraffin-embedded sections) - Anti-alpha 1 Fetoprotein antibody [C3] - BSA and Azide free (ab212320)

**Please note:** All products are "FOR RESEARCH USE ONLY. NOT FOR USE IN DIAGNOSTIC PROCEDURES"

### Our Abpromise to you: Quality guaranteed and expert technical support

- Replacement or refund for products not performing as stated on the datasheet
- Valid for 12 months from date of delivery
- Response to your inquiry within 24 hours
- We provide support in Chinese, English, French, German, Japanese and Spanish
- Extensive multi-media technical resources to help you
- We investigate all quality concerns to ensure our products perform to the highest standards

If the product does not perform as described on this datasheet, we will offer a refund or replacement. For full details of the Abpromise, please visit <https://www.abcam.com/abpromise> or contact our technical team.

### Terms and conditions

- Guarantee only valid for products bought direct from Abcam or one of our authorized distributors