

Product datasheet

Anti-alpha 1 Fetoprotein antibody [CPT-R19-48-7] ab241324

Recombinant RabMAb

2 Images

Overview

Product name Anti-alpha 1 Fetoprotein antibody [CPT-R19-48-7]

Description Rabbit monoclonal [CPT-R19-48-7] to alpha 1 Fetoprotein

i This product is a [fast track antibody](#). It has been affinity purified and shows high titre values against the immunizing peptide by ELISA.

[Read the terms of use »](#)

Host species Rabbit

Species reactivity **Reacts with:** Human

Immunogen Synthetic peptide within Human alpha 1 Fetoprotein aa 350-450. The exact sequence is proprietary.

Database link: [P02771](#)

Positive control ELISA: CPTAC-23a peptide.

General notes This product is a recombinant monoclonal antibody, which offers several advantages including:

- High batch-to-batch consistency and reproducibility
- Improved sensitivity and specificity
- Long-term security of supply
- Animal-free production

For more information [see here](#).

Our RabMAb[®] technology is a patented hybridoma-based technology for making rabbit monoclonal antibodies. For details on our patents, please refer to [RabMAb[®] patents](#).

Reproducibility is key to advancing scientific discovery and accelerating scientists' next breakthrough.

Abcam is leading the way with our range of recombinant antibodies, knockout-validated antibodies and knockout cell lines, all of which support improved reproducibility.

We are also planning to innovate the way in which we present recommended applications and species on our product datasheets, so that only applications & species that have been tested in our own labs, our suppliers or by selected trusted collaborators are covered by our Abpromise[™] guarantee.

In preparation for this, we have started to update the applications & species that this product is

Abpromise guaranteed for.

We are also updating the applications & species that this product has been “predicted to work with,” however this information is not covered by our Abpromise guarantee.

Applications & species from publications and Abreviews that have not been tested in our own labs or in those of our suppliers are not covered by the Abpromise guarantee.

Please check that this product meets your needs before purchasing. If you have any questions, special requirements or concerns, please send us an inquiry and/or contact our Support team ahead of purchase. Recommended alternatives for this product can be found below, as well as customer reviews and Q&As.

Properties

Form	Liquid
Storage instructions	Shipped at 4°C. Store at +4°C short term (1-2 weeks). Upon delivery aliquot. Store at -20°C long term. Avoid freeze / thaw cycle.
Storage buffer	pH: 7.2 Preservative: 0.05% Sodium azide Constituents: PBS, 0.59% Sodium citrate, 0.03% EDTA
Purity	Protein A purified
Clonality	Monoclonal
Clone number	CPT-R19-48-7
Isotype	IgG

Applications

Fast track antibodies constitute a diverse group of products that have been released to accelerate your research, but are not yet fully characterized. They have all been affinity purified and show high titre values against the immunizing peptide (by ELISA).

[Fast track terms of use](#)

Application	Abreviews	Notes
ELISA		Use a concentration of 0 - 4 µg/ml.

Target

Function	Binds copper, nickel, and fatty acids as well as, and bilirubin less well than, serum albumin. Only a small percentage (less than 2%) of the human AFP shows estrogen-binding properties.
Tissue specificity	Plasma. Synthesized by the fetal liver and yolk sac.
Sequence similarities	Belongs to the ALB/AFP/VDB family. Contains 3 albumin domains.
Developmental stage	Occurs in the plasma of fetuses more than 4 weeks old, reaches the highest levels during the 12th-16th week of gestation, and drops to trace amounts after birth. The serum level in adults is usually less than 40 ng/ml. AFP occurs also at high levels in the plasma and ascitic fluid of adults with hepatoma.

Post-translational modifications

Independent studies suggest heterogeneity of the N-terminal sequence of the mature protein and of the cleavage site of the signal sequence.

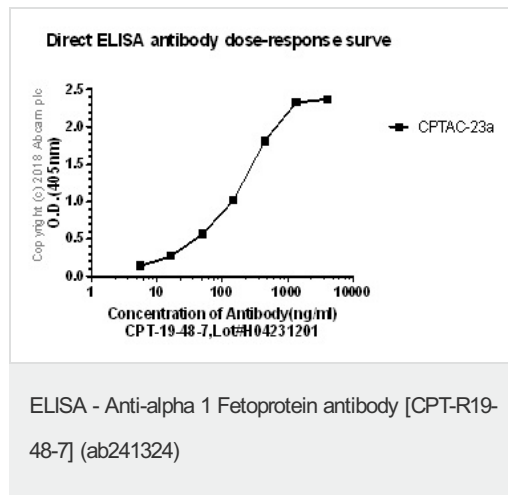
Sulfated.

Cellular localization

Secreted.

Images

This Fast-Track antibody is not yet fully characterised. These images represent **inconclusive preliminary data**.



100 ng CPTAC-23a (2000 ng/mL, 50 μ L per well) was coated onto 96-wells.

Serial dilutions (0, 0.01, 0.02, 0.05, 0.15, 0.44, 1.33, 4.00 μ g/mL) of ab241324 (50 μ L) were incubated with CPTAC-23a in each well for 60 minutes by shaking. This was followed by adding goat anti-rabbit IgG, (H+L), phosphatase-conjugated secondary antibody (50 μ L) into each well and incubating for another 40 minutes. After washing, 50 μ L of PNPP was added and incubated for 15 minutes without shaking for color development.

OD was read at 405nm within 5 minutes.

Why choose a recombinant antibody?

- Research with confidence**
Consistent and reproducible results
- Long-term and scalable supply**
Recombinant technology
- Success from the first experiment**
Confirmed specificity
- Ethical standards compliant**
Animal-free production

Anti-alpha 1 Fetoprotein antibody [CPT-R19-48-7] (ab241324)

Please note: All products are "FOR RESEARCH USE ONLY. NOT FOR USE IN DIAGNOSTIC PROCEDURES"

Terms and conditions

- Guarantee only valid for products bought direct from Abcam or one of our authorized distributors