

Product datasheet

Anti-alpha 1 Sodium Potassium ATPase antibody ab211130

1 References 2 Images

Overview

Product name	Anti-alpha 1 Sodium Potassium ATPase antibody
Description	Rabbit polyclonal to alpha 1 Sodium Potassium ATPase
Host species	Rabbit
Tested applications	Suitable for: WB, IHC - Wholemount
Species reactivity	Reacts with: Zebrafish
Immunogen	Recombinant fragment within Zebrafish alpha 1 Sodium Potassium ATPase aa 620-868. The exact sequence is proprietary. Database link: 64615
Positive control	Zebrafish brain whole cell lysate, zebrafish tissue.
General notes	<p>The Life Science industry has been in the grips of a reproducibility crisis for a number of years. Abcam is leading the way in addressing this with our range of recombinant monoclonal antibodies and knockout edited cell lines for gold-standard validation. Please check that this product meets your needs before purchasing.</p> <p>If you have any questions, special requirements or concerns, please send us an inquiry and/or contact our Support team ahead of purchase. Recommended alternatives for this product can be found below, along with publications, customer reviews and Q&As</p>

Properties

Form	Liquid
Storage instructions	Shipped at 4°C. Store at +4°C short term (1-2 weeks). Upon delivery aliquot. Store at -20°C long term. Avoid freeze / thaw cycle.
Storage buffer	pH: 7.00 Preservative: 0.01% Thimerosal (merthiolate) Constituents: 79.99% PBS, 20% Glycerol (glycerin, glycerine)
Purity	Immunogen affinity purified
Clonality	Polyclonal
Isotype	IgG

Applications

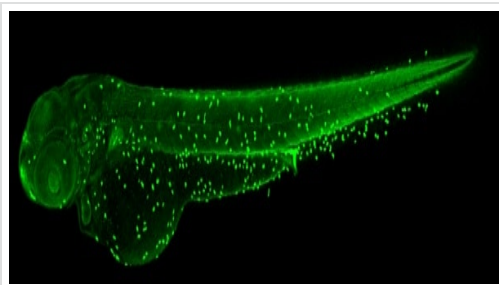
The Abpromise guarantee Our [Abpromise guarantee](#) covers the use of ab211130 in the following tested applications. The application notes include recommended starting dilutions; optimal dilutions/concentrations should be determined by the end user.

Application	Abreviews	Notes
WB		1/5000 - 1/20000. Predicted molecular weight: 113 kDa.
IHC - Wholemount		1/100 - 1/500.

Target

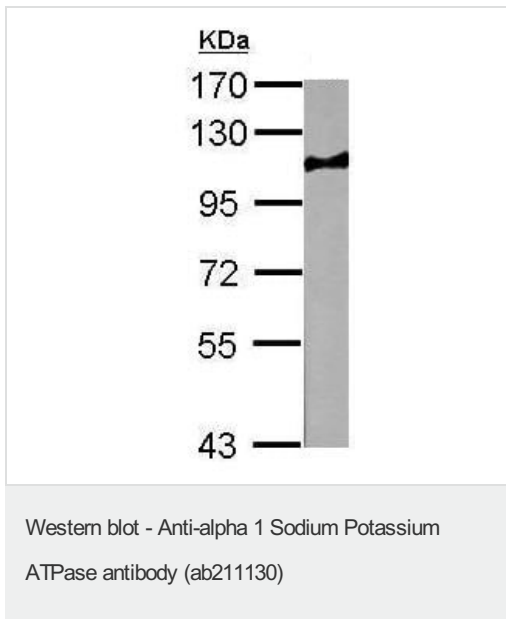
Function	This is the catalytic component of the active enzyme, which catalyzes the hydrolysis of ATP coupled with the exchange of sodium and potassium ions across the plasma membrane. This action creates the electrochemical gradient of sodium and potassium ions, providing the energy for active transport of various nutrients.
Sequence similarities	Belongs to the cation transport ATPase (P-type) (TC 3.A.3) family. Type IIC subfamily.
Post-translational modifications	Phosphorylation on Tyr-10 modulates pumping activity.
Cellular localization	Cell membrane. Melanosome. Identified by mass spectrometry in melanosome fractions from stage I to stage IV.

Images



IHC - Wholemount - Anti-alpha 1 Sodium Potassium ATPase antibody (ab211130)

3 days-post fertilization zebrafish embryo stained for alpha 1 Sodium Potassium ATPase with [ab211130](#) (1/100) in Immunohistochemical (wholemount) analysis.



Anti-alpha 1 Sodium Potassium ATPase antibody (ab211130) at
1/20000 dilution + Zebrafish brain whole cell lysate at 10 µg

Predicted band size: 113 kDa

7.5% SDS-PAGE

Please note: All products are "FOR RESEARCH USE ONLY. NOT FOR USE IN DIAGNOSTIC PROCEDURES"

Our Abpromise to you: Quality guaranteed and expert technical support

- Replacement or refund for products not performing as stated on the datasheet
- Valid for 12 months from date of delivery
- Response to your inquiry within 24 hours
- We provide support in Chinese, English, French, German, Japanese and Spanish
- Extensive multi-media technical resources to help you
- We investigate all quality concerns to ensure our products perform to the highest standards

If the product does not perform as described on this datasheet, we will offer a refund or replacement. For full details of the Abpromise, please visit <https://www.abcam.com/abpromise> or contact our technical team.

Terms and conditions

- Guarantee only valid for products bought direct from Abcam or one of our authorized distributors