

## Product datasheet

# Anti-Alpha 2 Antiplasmin antibody [EPSIS17] ab150414

RabMAb

[1 References](#) [2 Images](#)

### Overview

---

<b>Product name</b>	Anti-Alpha 2 Antiplasmin antibody [EPSIS17]
<b>Description</b>	Rabbit monoclonal [EPSIS17] to Alpha 2 Antiplasmin
<b>Host species</b>	Rabbit
<b>Tested applications</b>	<b>Suitable for:</b> WB, IHC-P <b>Unsuitable for:</b> Flow Cyt, ICC/IF or IP
<b>Species reactivity</b>	<b>Reacts with:</b> Human
<b>Immunogen</b>	Synthetic peptide within Human Alpha 2 Antiplasmin aa 50-150. The exact sequence is proprietary.
<b>Positive control</b>	HepG2 cell lysate, Human liver tissue
<b>General notes</b>	<p>Our RabMAb<sup>®</sup> technology is a patented hybridoma-based technology for making rabbit monoclonal antibodies. For details on our patents, please refer to <a href="#">RabMAb<sup>®</sup> patents</a>.</p> <p>The Life Science industry has been in the grips of a reproducibility crisis for a number of years. Abcam is leading the way in addressing this with our range of recombinant monoclonal antibodies and knockout edited cell lines for gold-standard validation. Please check that this product meets your needs before purchasing.</p> <p>If you have any questions, special requirements or concerns, please send us an inquiry and/or contact our Support team ahead of purchase. Recommended alternatives for this product can be found below, along with publications, customer reviews and Q&amp;As</p> <p>Mouse, Rat: We have preliminary internal testing data to indicate this antibody may not react with these species. Please contact us for more information.</p>

### Properties

---

<b>Form</b>	Liquid
<b>Storage instructions</b>	Shipped at 4°C. Upon delivery aliquot and store at -20°C. Avoid freeze / thaw cycles.
<b>Storage buffer</b>	<p>pH: 7.2</p> <p>Preservative: 0.01% Sodium azide</p> <p>Constituents: 9% PBS, 40% Glycerol (glycerin, glycerine), 0.05% BSA, 50% Tissue culture supernatant</p>

<b>Purity</b>	Tissue culture supernatant
<b>Clonality</b>	Monoclonal
<b>Clone number</b>	EPSIS17
<b>Isotype</b>	IgG

## Applications

**The Abpromise guarantee** Our [Abpromise guarantee](#) covers the use of ab150414 in the following tested applications. The application notes include recommended starting dilutions; optimal dilutions/concentrations should be determined by the end user.

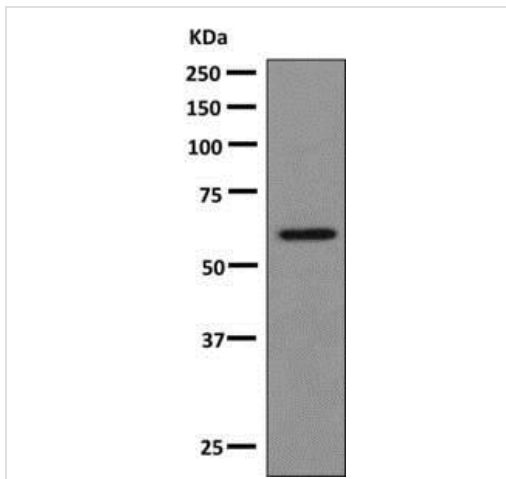
Application	Abreviews	Notes
<b>WB</b>		1/1000 - 1/10000. Detects a band of approximately 65 kDa (predicted molecular weight: 55 kDa).
<b>IHC-P</b>		1/100 - 1/250. Perform heat mediated antigen retrieval before commencing with IHC staining protocol. Heat up to 98°C, below boiling, and then let cool for 10-20 min.

**Application notes** Is unsuitable for Flow Cyt, ICC/IF or IP.

## Target

<b>Function</b>	Serine protease inhibitor. The major targets of this inhibitor are plasmin and trypsin, but it also inactivates matriptase-3/TMPRSS7 and chymotrypsin.
<b>Tissue specificity</b>	Expressed by the liver and secreted in plasma.
<b>Involvement in disease</b>	Defects in SERPINF2 are the cause of alpha-2-plasmin inhibitor deficiency (APLID) [MIM:262850]. APLID is an autosomal recessive disorder resulting in severe hemorrhagic diathesis.
<b>Sequence similarities</b>	Belongs to the serpin family.
<b>Cellular localization</b>	Secreted.

## Images



Western blot - Anti-Alpha 2 Antiplasmin antibody [EPSIS17] (ab150414)

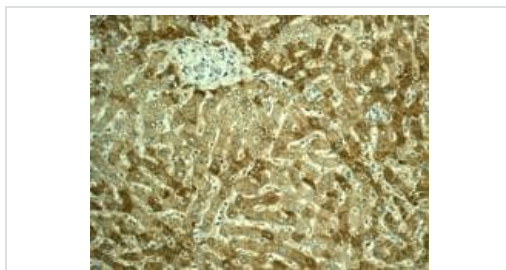
Anti-Alpha 2 Antiplasmin antibody [EPSIS17] (ab150414) at 1/1000 dilution + HepG2 cell lysate at 10 µg

**Secondary**

HRP labelled Goat anti-Rabbit at 1/2000 dilution

**Predicted band size:** 55 kDa

**Observed band size:** 65 kDa



Immunohistochemistry (Formalin/PFA-fixed paraffin-embedded sections) - Anti-Alpha 2 Antiplasmin antibody [EPSIS17] (ab150414)

Immunohistochemical analysis of paraffin embedded Human liver tissue labelling Alpha 2 Antiplasmin with ab150414 antibody at a dilution of 1/100.

Perform heat mediated antigen retrieval before commencing with IHC staining protocol.

**Please note:** All products are "FOR RESEARCH USE ONLY. NOT FOR USE IN DIAGNOSTIC PROCEDURES"

**Our Abpromise to you: Quality guaranteed and expert technical support**

- Replacement or refund for products not performing as stated on the datasheet
- Valid for 12 months from date of delivery
- Response to your inquiry within 24 hours
- We provide support in Chinese, English, French, German, Japanese and Spanish
- Extensive multi-media technical resources to help you
- We investigate all quality concerns to ensure our products perform to the highest standards

If the product does not perform as described on this datasheet, we will offer a refund or replacement. For full details of the Abpromise, please visit <https://www.abcam.com/abpromise> or contact our technical team.

**Terms and conditions**

- Guarantee only valid for products bought direct from Abcam or one of our authorized distributors