

Product datasheet

Anti-alpha Adducin antibody [EP734Y] ab40760

RabMAb[®]

[1 References](#) [3 Images](#)

Overview

Product name	Anti-alpha Adducin antibody [EP734Y]
Description	Rabbit monoclonal [EP734Y] to alpha Adducin
Host species	Rabbit
Tested applications	Suitable for: WB, IHC-P, ICC/IF Unsuitable for: Flow Cyt or IP
Species reactivity	Reacts with: Mouse, Rat, Human
Immunogen	Synthetic peptide within Human alpha Adducin (C terminal). The exact sequence is proprietary.
Positive control	HeLa cell lysate, human lung (IHC-p).
General notes	<p>Our RabMAb[®] technology is a patented hybridoma-based technology for making rabbit monoclonal antibodies. For details on our patents, please refer to RabMAb[®] patents.</p> <p>Reproducibility is key to advancing scientific discovery and accelerating scientists' next breakthrough.</p> <p>Abcam is leading the way with our range of recombinant antibodies, knockout-validated antibodies and knockout cell lines, all of which support improved reproducibility.</p> <p>We are also planning to innovate the way in which we present recommended applications and species on our product datasheets, so that only applications & species that have been tested in our own labs, our suppliers or by selected trusted collaborators are covered by our Abpromise[™] guarantee.</p> <p>In preparation for this, we have started to update the applications & species that this product is Abpromise guaranteed for.</p> <p>We are also updating the applications & species that this product has been "predicted to work with," however this information is not covered by our Abpromise guarantee.</p> <p>Applications & species from publications and Abreviews that have not been tested in our own labs or in those of our suppliers are not covered by the Abpromise guarantee.</p> <p>Please check that this product meets your needs before purchasing. If you have any questions, special requirements or concerns, please send us an inquiry and/or contact our Support team ahead of purchase. Recommended alternatives for this product can be found below, as well as customer reviews and Q&As.</p>

Properties

Form	Liquid
Storage instructions	Shipped at 4°C. Upon delivery aliquot and store at -20°C. Avoid freeze / thaw cycles.
Storage buffer	pH: 7.20 Preservative: 0.05% Sodium azide Constituents: 99% Tissue culture supernatant, 0.1% BSA
Purity	Tissue culture supernatant
Clonality	Monoclonal
Clone number	EP734Y
Isotype	IgG

Applications

Our [Abpromise guarantee](#) covers the use of **ab40760** in the following tested applications.

The application notes include recommended starting dilutions; optimal dilutions/concentrations should be determined by the end user.

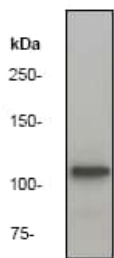
Application	Abreviews	Notes
WB		1/5000 - 1/50000. Detects a band of approximately 120 kDa (predicted molecular weight: 120 kDa).
IHC-P		1/250 - 1/500. Perform heat mediated antigen retrieval with citrate buffer pH 6 before commencing with IHC staining protocol.
ICC/IF		1/250 - 1/500.

Application notes Is unsuitable for Flow Cyt or IP.

Target

Function	Membrane-cytoskeleton-associated protein that promotes the assembly of the spectrin-actin network. Binds to calmodulin.
Tissue specificity	Expressed in all tissues. Found in much higher levels in reticulocytes than the beta subunit.
Sequence similarities	Belongs to the aldolase class II family. Adducin subfamily.
Domain	Each subunit is comprised of three regions: a NH ₂ -terminal protease-resistant globular head region, a short connecting subdomain, and a protease-sensitive tail region.
Cellular localization	Cytoplasm > cytoskeleton. Cell membrane.

Images

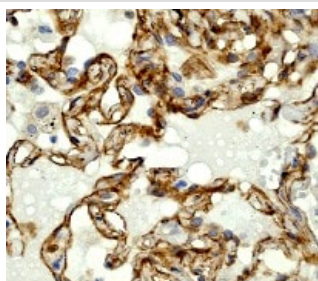


Western blot - Anti-alpha Adducin antibody [EP734Y] (ab40760)

Anti-alpha Adducin antibody [EP734Y] (ab40760) at 1/50000 dilution + HeLa cell lysate at 10 µg

Predicted band size: 120 kDa

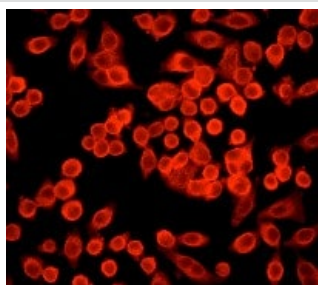
Observed band size: 120 kDa



Immunohistochemistry (Formalin/PFA-fixed paraffin-embedded sections) - Anti-alpha Adducin antibody [EP734Y] (ab40760)

ab40760 (1/250), staining human lung by immunohistochemistry, paraffin embedded tissue.

Perform heat mediated antigen retrieval with citrate buffer pH 6 before commencing with IHC staining protocol.



Immunocytochemistry/ Immunofluorescence - Anti-alpha Adducin antibody [EP734Y] (ab40760)

ab40760, (1/250) staining HeLa cells by immunofluorescence.

Please note: All products are "FOR RESEARCH USE ONLY. NOT FOR USE IN DIAGNOSTIC PROCEDURES"

Our Promise to you: Quality guaranteed and expert technical support

- Replacement or refund for products not performing as stated on the datasheet
- Valid for 12 months from date of delivery

- Response to your inquiry within 24 hours
- We provide support in Chinese, English, French, German, Japanese and Spanish
- Extensive multi-media technical resources to help you
- We investigate all quality concerns to ensure our products perform to the highest standards

If the product does not perform as described on this datasheet, we will offer a refund or replacement. For full details of the Abpromise, please visit <https://www.abcam.com/abpromise> or contact our technical team.

Terms and conditions

- Guarantee only valid for products bought direct from Abcam or one of our authorized distributors