




Product datasheet

Anti-Alpha B Crystallin antibody ab231268

8 Images

Overview

<b>Product name</b>	Anti-Alpha B Crystallin antibody
<b>Description</b>	Rabbit polyclonal to Alpha B Crystallin
<b>Host species</b>	Rabbit
<b>Tested applications</b>	<b>Suitable for:</b> WB, IHC-P
<b>Species reactivity</b>	<b>Reacts with:</b> Mouse, Human, Pig <b>Predicted to work with:</b> Rat, Sheep, Rabbit, Cow, Cynomolgus monkey, Orangutan 
<b>Immunogen</b>	Recombinant full length protein (His-T7-tag) corresponding to Human Alpha B Crystallin aa 1-175. (Expressed in E.coli). Sequence: MDIAIHHPWIRRPFFPFHSPSRLFDQFFGEHLLESDLFPTS TSLSPFYLR PPSFLRAPSWFDTGLSEMRLEKDRFSVNLDVKHFSPEEL KVKVLGDVIEV HGKHEERQDEHGFISREFHRKYRIPADVPLTITSSLSDDG VLTVNGPRK QVSGPERTIPITREEKPAVTAAPKK  Database link: <a href="#">P02511</a>   <a href="#">Run BLAST with</a>  <a href="#">Run BLAST with</a>
<b>Positive control</b>	IHC-P: Human cerebrum, glioma and kidney tissues. WB: Mouse brain, heart and crebrum lysates; Pig brain and cerebrum lysates; Recombinant human Alpha B Crystallin protein.
<b>General notes</b>	Reproducibility is key to advancing scientific discovery and accelerating scientists' next breakthrough.  Abcam is leading the way with our range of recombinant antibodies, knockout-validated antibodies and knockout cell lines, all of which support improved reproducibility.  We are also planning to innovate the way in which we present recommended applications and species on our product datasheets, so that only applications & species that have been tested in our own labs, our suppliers or by selected trusted collaborators are covered by our Abpromise™ guarantee.  In preparation for this, we have started to update the applications & species that this product is Abpromise guaranteed for.  We are also updating the applications & species that this product has been “predicted to work with,” however this information is not covered by our Abpromise guarantee.

Applications & species from publications and Abreviews that have not been tested in our own labs or in those of our suppliers are not covered by the Abpromise guarantee.

Please check that this product meets your needs before purchasing. If you have any questions, special requirements or concerns, please send us an inquiry and/or contact our Support team ahead of purchase. Recommended alternatives for this product can be found below, as well as customer reviews and Q&As.

## Properties

---

<b>Form</b>	Liquid
<b>Storage instructions</b>	Shipped at 4°C. Store at +4°C short term (1-2 weeks). Upon delivery aliquot. Store at -20°C long term. Avoid freeze / thaw cycle.
<b>Storage buffer</b>	pH: 7.40 Preservative: 0.02% Sodium azide Constituents: PBS, 50% Glycerol
<b>Purity</b>	Immunogen affinity purified
<b>Purification notes</b>	ab231268 was purified by antigen-specific affinity chromatography followed by Protein A affinity chromatography.
<b>Clonality</b>	Polyclonal
<b>Isotype</b>	IgG

## Applications

---

Our [Abpromise guarantee](#) covers the use of **ab231268** in the following tested applications.

The application notes include recommended starting dilutions; optimal dilutions/concentrations should be determined by the end user.

Application	Abreviews	Notes
WB		Use a concentration of 0.5 - 2 µg/ml. Predicted molecular weight: 20 kDa.
IHC-P		Use a concentration of 5 - 20 µg/ml.

## Target

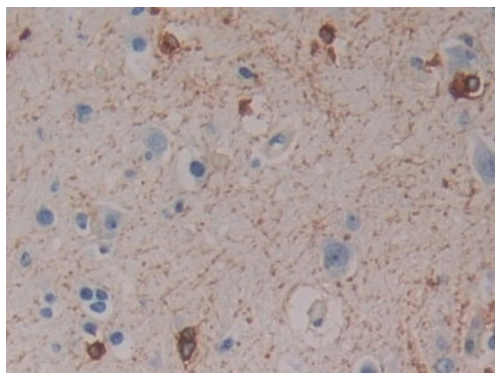
---

<b>Function</b>	May contribute to the transparency and refractive index of the lens.
<b>Tissue specificity</b>	Lens as well as other tissues.
<b>Involvement in disease</b>	Defects in CRYAB are the cause of myofibrillar alpha-B crystallin-related (MFM-CRYAB) [MIM:608810]. A neuromuscular disorder that results in weakness of the proximal and distal limb muscles, weakness of the neck, velopharynx and trunk muscles, hypertrophic cardiomyopathy, and cataract in a subset of patients.
<b>Sequence similarities</b>	Belongs to the small heat shock protein (HSP20) family.
<b>Cellular localization</b>	Cytoplasm. Nucleus. Translocates to the nucleus during heat shock and resides in sub-nuclear structures known as SC35 speckles or nuclear splicing speckles.

---

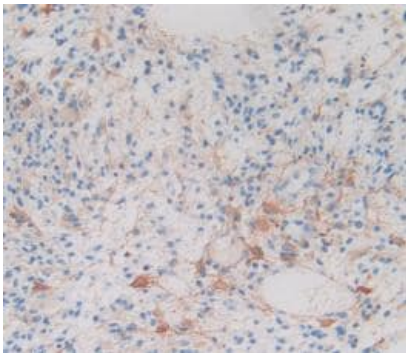
## Images

---



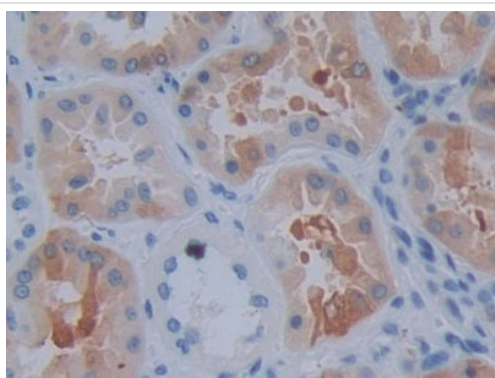
Immunohistochemistry (Formalin/PFA-fixed paraffin-embedded sections) - Anti-Alpha B Crystallin antibody (ab231268)

Paraffin-embedded human cerebrum tissue stained for Alpha B Crystallin antibody using ab231268 at 10 µg/ml in immunohistochemical analysis. DAB staining.



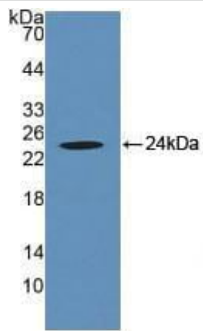
Immunohistochemistry (Formalin/PFA-fixed paraffin-embedded sections) - Anti-Alpha B Crystallin antibody (ab231268)

Paraffin-embedded human glioma tissue stained for Alpha B Crystallin antibody using ab231268 at 20 µg/ml in immunohistochemical analysis. DAB staining.



Immunohistochemistry (Formalin/PFA-fixed paraffin-embedded sections) - Anti-Alpha B Crystallin antibody (ab231268)

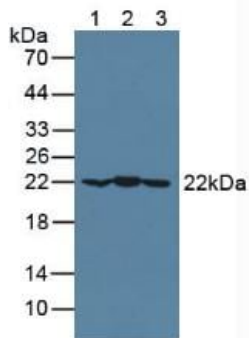
Paraffin-embedded human kidney tissue stained for Alpha B Crystallin antibody using ab231268 at 20 µg/ml in immunohistochemical analysis. DAB staining.



Western blot - Anti-Alpha B Crystallin antibody  
(ab231268)

Anti-Alpha B Crystallin antibody (ab231268) at 2 µg/ml +  
Recombinant human Alpha B Crystallin protein.

**Predicted band size:** 20 kDa



Western blot - Anti-Alpha B Crystallin antibody  
(ab231268)

**All lanes :** Anti-Alpha B Crystallin antibody (ab231268) at 3 µg/ml

**Lane 1 :** Mouse brain lysate

**Lane 2 :** Mouse heart lysate

**Lane 3 :** Pig brain lysate

**Secondary**

**All lanes :** HRP-Linked Guinea pig Anti-Rabbit antibody at 1/2000  
dilution

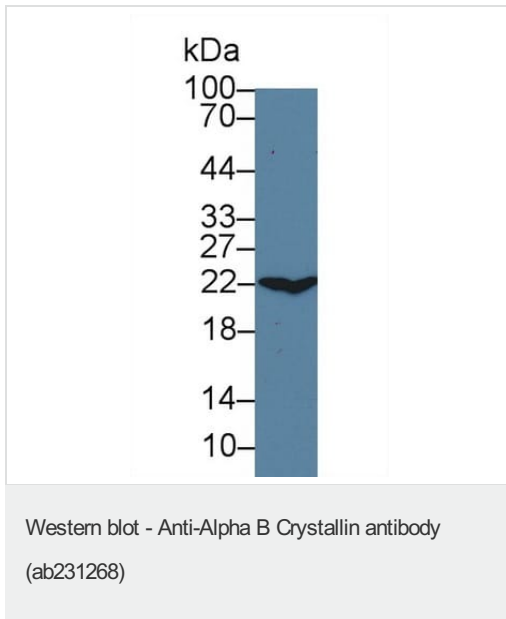
**Predicted band size:** 20 kDa



Western blot - Anti-Alpha B Crystallin antibody  
(ab231268)

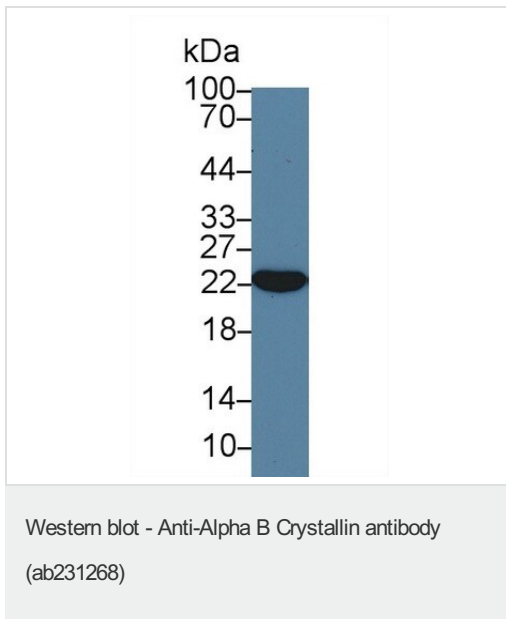
Anti-Alpha B Crystallin antibody (ab231268) at 2 µg/ml + Pig  
cerebrum lysate.

**Predicted band size:** 20 kDa



Anti-Alpha B Crystallin antibody (ab231268) at 2 µg/ml + Mouse cerebrum lysate.

**Predicted band size:** 20 kDa



Anti-Alpha B Crystallin antibody (ab231268) at 2 µg/ml + Mouse heart lysate.

**Predicted band size:** 20 kDa

**Please note:** All products are "FOR RESEARCH USE ONLY. NOT FOR USE IN DIAGNOSTIC PROCEDURES"

### Our Abpromise to you: Quality guaranteed and expert technical support

- Replacement or refund for products not performing as stated on the datasheet
- Valid for 12 months from date of delivery
- Response to your inquiry within 24 hours
- We provide support in Chinese, English, French, German, Japanese and Spanish
- Extensive multi-media technical resources to help you

- We investigate all quality concerns to ensure our products perform to the highest standards

If the product does not perform as described on this datasheet, we will offer a refund or replacement. For full details of the Abpromise, please visit <https://www.abcam.com/abpromise> or contact our technical team.

### **Terms and conditions**

---

- Guarantee only valid for products bought direct from Abcam or one of our authorized distributors