


Product datasheet

Anti-Alpha B Crystallin (phospho S45) antibody ab5598

2 References 1 Image

Overview

| | |
|----------------------------|---|
| Product name | Anti-Alpha B Crystallin (phospho S45) antibody |
| Description | Rabbit polyclonal to Alpha B Crystallin (phospho S45) |
| Host species | Rabbit |
| Tested applications | Suitable for: IHC-P, WB, ICC/IF |
| Species reactivity | Reacts with: Mouse, Rat, Cow, Human Predicted to work with: Sheep, Rabbit, Hamster, Pig, Cynomolgus monkey  |
| Immunogen | Synthetic peptide corresponding to Human Alpha B Crystallin aa 44-54. Sequence: LS _p PFYLRPPSF Run BLAST with Run BLAST with |
| Positive control | Immunofluorescence staining of phospho-alpha-B crystallin (Ser45) in U373 MG cells results in cytoplasmic staining. |

Properties

| | |
|-----------------------------|--|
| Form | Liquid |
| Storage instructions | Shipped at 4°C. Store at +4°C short term (1-2 weeks). Upon delivery aliquot. Store at -20°C or -80°C. Avoid freeze / thaw cycle. |
| Storage buffer | Preservative: 0.05% Sodium azide Constituents: 99% PBS, 3% BSA |
| Purity | Immunogen affinity purified |
| Clonality | Polyclonal |
| Isotype | IgG |

Applications

Our [Abpromise guarantee](#) covers the use of **ab5598** in the following tested applications.

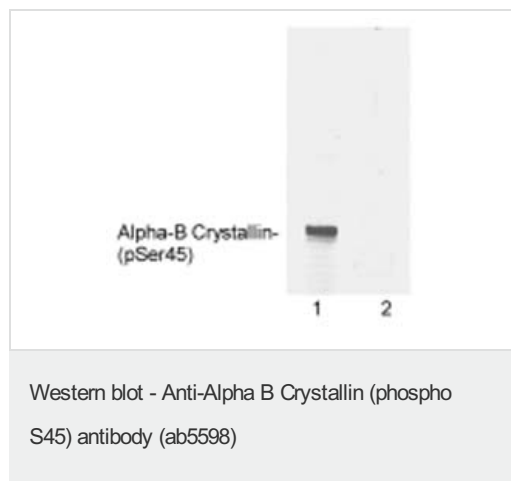
The application notes include recommended starting dilutions; optimal dilutions/concentrations should be determined by the end user.

| Application | Abreviews | Notes |
|-------------|-----------|---|
| IHC-P | | Use a concentration of 8 µg/ml. |
| WB | | Use a concentration of 0.5 µg/ml. Detects a band of approximately 20 kDa. |
| ICC/IF | | Use a concentration of 5 µg/ml. |

Target

| | |
|-------------------------------|--|
| Function | May contribute to the transparency and refractive index of the lens. |
| Tissue specificity | Lens as well as other tissues. |
| Involvement in disease | Defects in CRYAB are the cause of myofibrillar alpha-B crystallin-related (MFM-CRYAB) [MIM:608810]. A neuromuscular disorder that results in weakness of the proximal and distal limb muscles, weakness of the neck, velopharynx and trunk muscles, hypertrophic cardiomyopathy, and cataract in a subset of patients. |
| Sequence similarities | Belongs to the small heat shock protein (HSP20) family. |
| Cellular localization | Cytoplasm. Nucleus. Translocates to the nucleus during heat shock and resides in sub-nuclear structures known as SC35 speckles or nuclear splicing speckles. |

Images



Western blot of recombinant bovine phospho-alpha-B crystallin (Ser45) using ab5598. Lane 1 is phospho-alpha-B crystallin (Ser45) and lane 2 is unphosphorylated alpha-B crystallin.

Please note: All products are "FOR RESEARCH USE ONLY AND ARE NOT INTENDED FOR DIAGNOSTIC OR THERAPEUTIC USE"

Our Abpromise to you: Quality guaranteed and expert technical support

- Replacement or refund for products not performing as stated on the datasheet
- Valid for 12 months from date of delivery
- Response to your inquiry within 24 hours
- We provide support in Chinese, English, French, German, Japanese and Spanish

- Extensive multi-media technical resources to help you
- We investigate all quality concerns to ensure our products perform to the highest standards

If the product does not perform as described on this datasheet, we will offer a refund or replacement. For full details of the Abpromise, please visit <https://www.abcam.com/abpromise> or contact our technical team.

Terms and conditions

- Guarantee only valid for products bought direct from Abcam or one of our authorized distributors