

Product datasheet

Anti-alpha + beta Synuclein antibody ab21975

1 Image

Overview

Product name	Anti-alpha + beta Synuclein antibody
Description	Sheep polyclonal to alpha + beta Synuclein
Host species	Sheep
Specificity	Immunogen sequence is 100% identical to alpha and beta and is similar to a lesser extent to gamma synuclein. This antibody cross reacts with beta and alpha synuclein but not to gamma synuclein.
Tested applications	Suitable for: IHC-P, WB
Species reactivity	Reacts with: Human Predicted to work with: Mouse, Rat, Chicken ▲
Immunogen	Synthetic peptide corresponding to Human alpha + beta Synuclein. Sequence: AKEGVVAAAEEKTKQGV

 [Run BLAST with](#)

 [Run BLAST with](#)

General notes

This antibody achieves excellent staining of Lewy bodies in Parkinson's disease and Dementia with Lewy bodies disease tissue and gives excellent staining of glial inclusions in Multi System Atrophy tissue.

Properties

Form	Liquid
Storage instructions	Shipped at 4°C. Upon delivery aliquot and store at -20°C. Avoid freeze / thaw cycles.
Storage buffer	Constituent: Whole serum
Purity	Whole antiserum
Purification notes	Filtered serum.
Primary antibody notes	This antibody achieves excellent staining of Lewy bodies in Parkinson's disease and Dementia with Lewy bodies disease tissue and gives excellent staining of glial inclusions in Multi System Atrophy tissue.
Clonality	Polyclonal
Isotype	IgG

Applications

Our [Abpromise guarantee](#) covers the use of **ab21975** in the following tested applications.

The application notes include recommended starting dilutions; optimal dilutions/concentrations should be determined by the end user.

Application	Abreviews	Notes
IHC-P		1/1000 - 1/4000.
WB		1/2000 - 1/8000. Predicted molecular weight: 14 kDa.

Target

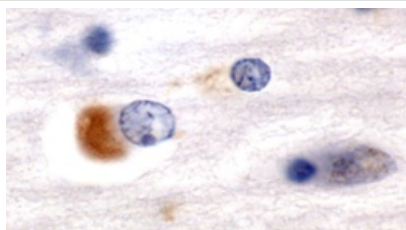
Relevance

Synucleins are small soluble proteins expressed primarily in neural tissues and in certain tumors. The family includes 3 known proteins, alpha synuclein, beta synuclein and gamma synuclein. All synucleins have in common a highly conserved alpha helical lipid binding motif with similarity to the class A2 lipid binding domains of the exchangeable apolipoproteins. The alpha and beta synuclein proteins are found primarily in brain tissue, where they are seen mainly in pre synaptic terminals. Alpha synuclein is believed to be a major component of Lewy bodies in Parkinson's disease. Mutations in alpha synuclein are associated with rare familial cases of early onset Parkinson's disease, Alzheimer's disease and several other neurodegenerative illnesses.

Cellular localization

Cytoplasmic. Membrane bound in dopaminergic neurons. Also found in the nucleus.

Images



Staining of Lewy body in Dementia with Lewy body disease tissue. Primary antibody ab21975 at 1/1000, secondary antibody biotinylated Donkey and sheep followed by Vector ABC and DAB substrate.

Immunohistochemistry (Formalin/PFA-fixed paraffin-embedded sections) - Anti-alpha + beta Synuclein antibody (ab21975)

Please note: All products are "FOR RESEARCH USE ONLY AND ARE NOT INTENDED FOR DIAGNOSTIC OR THERAPEUTIC USE"

Our Abpromise to you: Quality guaranteed and expert technical support

- Replacement or refund for products not performing as stated on the datasheet
- Valid for 12 months from date of delivery
- Response to your inquiry within 24 hours

- We provide support in Chinese, English, French, German, Japanese and Spanish
- Extensive multi-media technical resources to help you
- We investigate all quality concerns to ensure our products perform to the highest standards

If the product does not perform as described on this datasheet, we will offer a refund or replacement. For full details of the Abpromise, please visit <https://www.abcam.com/abpromise> or contact our technical team.

Terms and conditions

- Guarantee only valid for products bought direct from Abcam or one of our authorized distributors