

Product datasheet

Anti-alpha Lactalbumin antibody [F20.16] ab20212

1 References 1 Image

Overview

Product name	Anti-alpha Lactalbumin antibody [F20.16]
Description	Mouse monoclonal [F20.16] to alpha Lactalbumin
Host species	Mouse
Tested applications	Suitable for: ICC/IF
Species reactivity	Reacts with: Human
Immunogen	Purified Alpha Lactalbumin

General notes

This antibody can be used as an in vitro marker of terminally differentiated breast luminal epithelial cells.

The Life Science industry has been in the grips of a reproducibility crisis for a number of years. Abcam is leading the way in addressing this with our range of recombinant monoclonal antibodies and knockout edited cell lines for gold-standard validation. Please check that this product meets your needs before purchasing.

If you have any questions, special requirements or concerns, please send us an inquiry and/or contact our Support team ahead of purchase. Recommended alternatives for this product can be found below, along with publications, customer reviews and Q&As

Properties

Form	Liquid
Storage instructions	Shipped at 4°C. Store at +4°C short term (1-2 weeks). Upon delivery aliquot. Store at -20°C or -80°C. Avoid freeze / thaw cycle.
Storage buffer	Constituent: PBS
Purity	Purified IgM
Purification notes	This antibody was purified using affinity chromatography. The sample was eluted using a commercially bought Neutral Elution Buffer and exchanged into PBS using a G25 column.
Primary antibody notes	This antibody can be used as an in vitro marker of terminally differentiated breast luminal epithelial cells.
Clonality	Monoclonal
Clone number	F20.16

Myeloma	x63-Ag8.653
Isotype	IgM
Light chain type	unknown

Applications

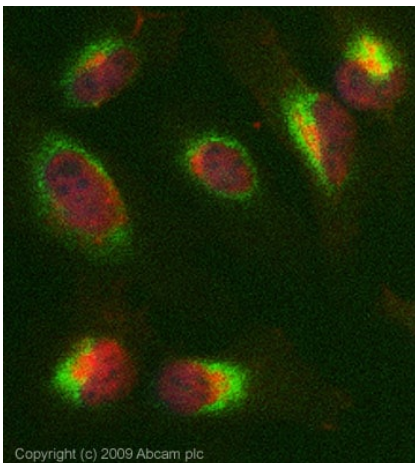
The Abpromise guarantee Our [Abpromise guarantee](#) covers the use of ab20212 in the following tested applications. The application notes include recommended starting dilutions; optimal dilutions/concentrations should be determined by the end user.

Application	Abreviews	Notes
ICC/IF		Use a concentration of 1 µg/ml.

Target

Function	Regulatory subunit of lactose synthase, changes the substrate specificity of galactosyltransferase in the mammary gland making glucose a good acceptor substrate for this enzyme. This enables LS to synthesize lactose, the major carbohydrate component of milk. In other tissues, galactosyltransferase transfers galactose onto the N-acetylglucosamine of the oligosaccharide chains in glycoproteins.
Tissue specificity	Mammary gland specific. Secreted in milk.
Sequence similarities	Belongs to the glycosyl hydrolase 22 family.
Cellular localization	Secreted.

Images



ICC/IF image of ab20212 stained HeLa cells. The cells were 4% PFA fixed (10 min) and then incubated in 1%BSA / 10% normal Goat serum / 0.3M glycine in 0.1% PBS-Tween for 1h to permeabilise the cells and block non-specific protein-protein interactions. The cells were then incubated with the antibody (ab20212, 1µg/ml) overnight at +4°C. The secondary antibody (green) was Alexa Fluor® 488 Goat anti-Mouse IgG (H+L) used at a 1/1000 dilution for 1h. Alexa Fluor® 594 WGA was used to label plasma membranes (red) at a 1/200 dilution for 1h. DAPI was used to stain the cell nuclei (blue) at a concentration of 1.43µM.

Immunocytochemistry/ Immunofluorescence - Anti-alpha Lactalbumin antibody [F20.16] (ab20212)

Please note: All products are "FOR RESEARCH USE ONLY. NOT FOR USE IN DIAGNOSTIC PROCEDURES"

Our Abpromise to you: Quality guaranteed and expert technical support

- Replacement or refund for products not performing as stated on the datasheet
- Valid for 12 months from date of delivery
- Response to your inquiry within 24 hours

- We provide support in Chinese, English, French, German, Japanese and Spanish
- Extensive multi-media technical resources to help you
- We investigate all quality concerns to ensure our products perform to the highest standards

If the product does not perform as described on this datasheet, we will offer a refund or replacement. For full details of the Abpromise, please visit <https://www.abcam.com/abpromise> or contact our technical team.

Terms and conditions

- Guarantee only valid for products bought direct from Abcam or one of our authorized distributors