

## Product datasheet

# Anti-alpha smooth muscle Actin antibody [BLR082G] ab265588

Recombinant

[4 References](#) [5 Images](#)

### Overview

---

<b>Product name</b>	Anti-alpha smooth muscle Actin antibody [BLR082G]
<b>Description</b>	Rabbit monoclonal [BLR082G] to alpha smooth muscle Actin
<b>Host species</b>	Rabbit
<b>Tested applications</b>	<b>Suitable for:</b> WB, IHC-P, ICC
<b>Species reactivity</b>	<b>Reacts with:</b> Mouse, Human
<b>Immunogen</b>	Synthetic peptide within Human alpha smooth muscle Actin aa 1-50. The exact sequence is proprietary. NP_001135417.1 Database link: <a href="#">P62736</a>
<b>Positive control</b>	IHC-P: Human breast tissue. Human colon carcinoma tissue. ICC: IMR-90 cells. WB: IMR-90 and NIH/3T3 whole cell lysate.

### Properties

---

<b>Form</b>	Liquid
<b>Storage instructions</b>	Shipped at 4°C. Store at +4°C short term (1-2 weeks). Upon delivery aliquot. Store at -20°C long term. Avoid freeze / thaw cycle.
<b>Storage buffer</b>	pH: 7.8 Preservative: 0.09% Sodium azide Constituents: 98% Borate buffered saline, 0.1% BSA
<b>Purity</b>	Affinity purified
<b>Purification notes</b>	Purified from TCS.
<b>Clonality</b>	Monoclonal
<b>Clone number</b>	BLR082G
<b>Isotype</b>	IgG

### Applications

---

## The Abpromise guarantee

Our [Abpromise guarantee](#) covers the use of ab265588 in the following tested applications.

The application notes include recommended starting dilutions; optimal dilutions/concentrations should be determined by the end user.

Application	Abreviews	Notes
WB		1/1000. Predicted molecular weight: 42 kDa.
IHC-P		1/100 - 1/500. Perform heat mediated antigen retrieval with citrate buffer pH 6 before commencing with IHC staining protocol.
ICC		1/100 - 1/500. Perform heat mediated antigen retrieval with citrate buffer pH 6 before commencing with IHC staining protocol.

## Target

### Function

Actins are highly conserved proteins that are involved in various types of cell motility and are ubiquitously expressed in all eukaryotic cells.

### Involvement in disease

Defects in ACTA2 are the cause of aortic aneurysm familial thoracic type 6 (AAT6) [MIM:611788]. AATs are characterized by permanent dilation of the thoracic aorta usually due to degenerative changes in the aortic wall. They are primarily associated with a characteristic histologic appearance known as 'medial necrosis' or 'Erdheim cystic medial necrosis' in which there is degeneration and fragmentation of elastic fibers, loss of smooth muscle cells, and an accumulation of basophilic ground substance.

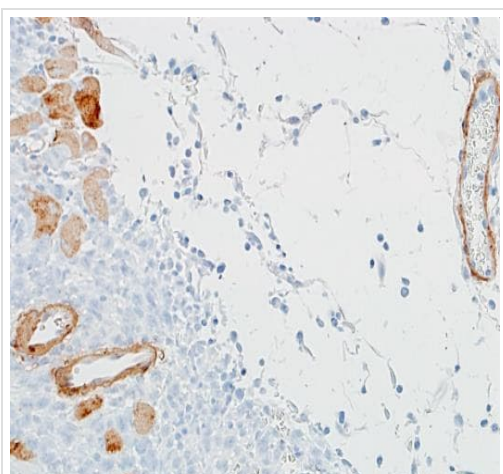
### Sequence similarities

Belongs to the actin family.

### Cellular localization

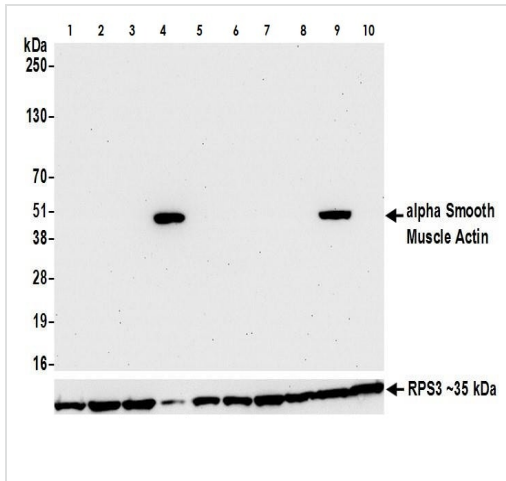
Cytoplasm > cytoskeleton.

## Images



Immunohistochemical analysis of formalin-fixed, paraffin-embedded human colon carcinoma tissue labeling alpha smooth muscle Actin with ab265588 at 1/100 dilution. Detection: DAB.

Immunohistochemistry (Formalin/PFA-fixed paraffin-embedded sections) - Anti-alpha smooth muscle Actin antibody (ab265588)



Western blot - Anti-alpha smooth muscle Actin antibody (ab265588)

**All lanes :** Anti-alpha smooth muscle Actin antibody [BLR082G] (ab265588) at 1/1000 dilution

**Lane 1 :** MCF7 whole cell lysate at 50  $\mu$ g

**Lane 2 :** A549 whole cell lysate at 50  $\mu$ g

**Lane 3 :** Jurkat whole cell lysate at 50  $\mu$ g

**Lane 4 :** IMR-90 whole cell lysate at 10  $\mu$ g

**Lane 5 :** HepG2 whole cell lysate at 50  $\mu$ g

**Lane 6 :** LNCaP whole cell lysate at 50  $\mu$ g

**Lane 7 :** RKO whole cell lysate at 50  $\mu$ g

**Lane 8 :** K562 whole cell lysate at 50  $\mu$ g

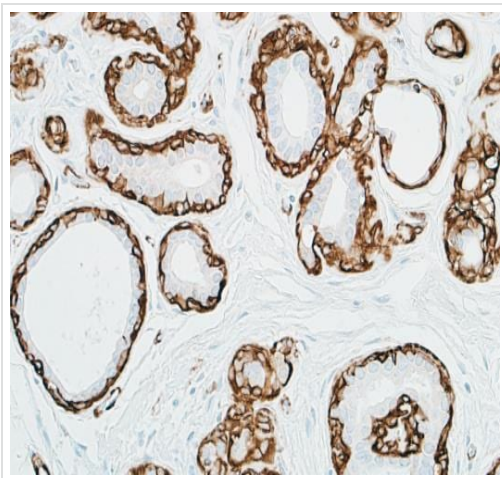
**Lane 9 :** NIH/3T3 whole cell lysate at 50  $\mu$ g

**Lane 10 :** TCMK whole cell lysate at 50  $\mu$ g

**Predicted band size:** 42 kDa

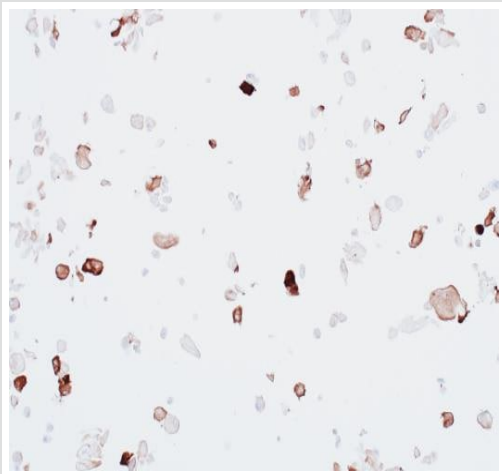
**Exposure time:** 30 seconds

Cells prepared using NETN lysis buffer.



Immunohistochemistry (Formalin/PFA-fixed paraffin-embedded sections) - Anti-alpha smooth muscle Actin antibody (ab265588)

Immunohistochemical analysis of formalin-fixed, paraffin-embedded human breast tissue labeling alpha smooth muscle Actin with ab265588 at 1/100 dilution. Detection: DAB.



Immunocytochemical analysis of formalin-fixed, paraffin-embedded IMR-90 cells labeling alpha smooth muscle Actin with ab265588 at 1/100 dilution. Detection: DAB.

Immunocytochemistry - Anti-alpha smooth muscle Actin antibody (ab265588)

### Why choose a recombinant antibody?



**Research with confidence**  
Consistent and reproducible results



**Long-term and scalable supply**  
Recombinant technology



**Success from the first experiment**  
Confirmed specificity



**Ethical standards compliant**  
Animal-free production

Anti-alpha smooth muscle Actin antibody (ab265588)

**Please note:** All products are "FOR RESEARCH USE ONLY. NOT FOR USE IN DIAGNOSTIC PROCEDURES"

### Our Abpromise to you: Quality guaranteed and expert technical support

- Replacement or refund for products not performing as stated on the datasheet
- Valid for 12 months from date of delivery
- Response to your inquiry within 24 hours

- We provide support in Chinese, English, French, German, Japanese and Spanish
- Extensive multi-media technical resources to help you
- We investigate all quality concerns to ensure our products perform to the highest standards

If the product does not perform as described on this datasheet, we will offer a refund or replacement. For full details of the Abpromise, please visit <https://www.abcam.com/abpromise> or contact our technical team.

### **Terms and conditions**

---

- Guarantee only valid for products bought direct from Abcam or one of our authorized distributors