

Product datasheet

Anti-ALS2CR1 antibody [EPR9335] ab137039

Recombinant RabMAb

2 Images

Overview

<b>Product name</b>	Anti-ALS2CR1 antibody [EPR9335]
<b>Description</b>	Rabbit monoclonal [EPR9335] to ALS2CR1
<b>Host species</b>	Rabbit
<b>Tested applications</b>	<b>Suitable for:</b> IP, Flow Cyt, ICC/IF, WB <b>Unsuitable for:</b> IHC-P
<b>Species reactivity</b>	<b>Reacts with:</b> Human
<b>Immunogen</b>	Synthetic peptide from Human ALS2CR1 (UniProt ID: Q9GZT8)
<b>Positive control</b>	Human brain lysate, 293T lysate or LNCaP lysate; HepG2 cells.
<b>General notes</b>	Mouse, Rat: We have preliminary internal testing data to indicate this antibody may not react with these species. Please contact us for more information.

Our RabMAb<sup>®</sup> technology is a patented hybridoma-based technology for making rabbit monoclonal antibodies. For details on our patents, please refer to [RabMab<sup>®</sup> patents](#).

This product is a [recombinant rabbit monoclonal antibody](#).

Properties

<b>Form</b>	Liquid
<b>Storage instructions</b>	Shipped at 4°C. Upon delivery aliquot and store at -20°C. Avoid freeze / thaw cycles.
<b>Storage buffer</b>	Preservative: 0.01% Sodium azide Constituents: 9% PBS, 40% Glycerol, 0.05% BSA, 50% Tissue culture supernatant
<b>Purity</b>	Tissue culture supernatant
<b>Clonality</b>	Monoclonal
<b>Clone number</b>	EPR9335
<b>Isotype</b>	IgG

Applications

Our [Abpromise guarantee](#) covers the use of **ab137039** in the following tested applications.

The application notes include recommended starting dilutions; optimal dilutions/concentrations should be determined by the end user.

Application	Abreviews	Notes
IP		1/10 - 1/100.
Flow Cyt		1/10 - 1/100. <a href="#">ab172730</a> - Rabbit monoclonal IgG, is suitable for use as an isotype control with this antibody.
ICC/IF		1/50 - 1/100.
WB		1/1000 - 1/10000. Predicted molecular weight: 42 kDa.

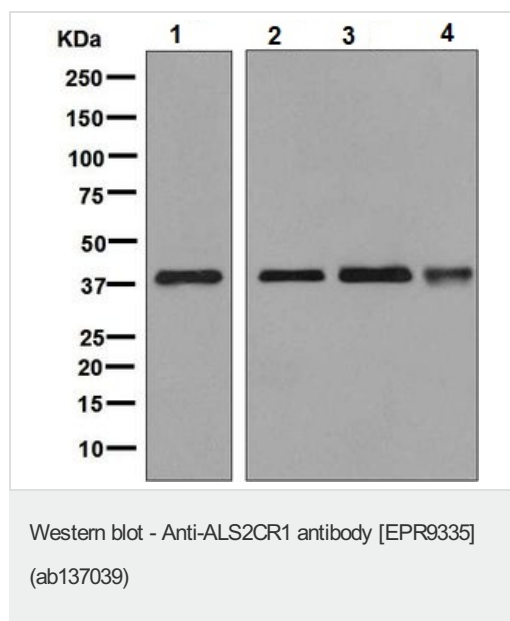
**Application notes** Is unsuitable for IHC-P.

## Target

**Sequence similarities** Belongs to the UPF0135 (NIF3) family.

**Cellular localization** Cytoplasm.

## Images



**All lanes** : Anti-ALS2CR1 antibody [EPR9335] (ab137039) at 1/1000 dilution

**Lane 1** : Human brain lysate

**Lane 2** : 293T lysate

**Lane 3** : HepG2 lysate

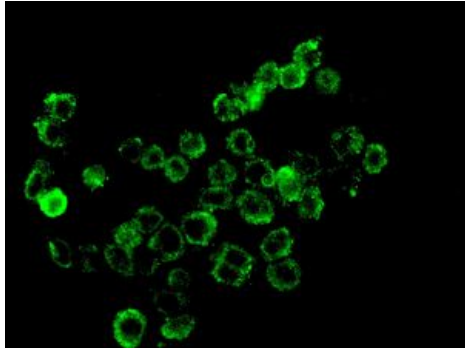
**Lane 4** : LNCaP lysate

Lysates/proteins at 10 µg per lane.

### Secondary

**All lanes** : HRP conjugated Goat anti Rabbit IgG at 1/2000 dilution

**Predicted band size:** 42 kDa



Immunofluorescence analysis of HepG2 cells labelling ALS2CR1 with ab137039 at 1/50 dilution.

Immunocytochemistry/ Immunofluorescence - Anti-ALS2CR1 antibody [EPR9335] (ab137039)

**Please note:** All products are "FOR RESEARCH USE ONLY. NOT FOR USE IN DIAGNOSTIC PROCEDURES"

### **Our Abpromise to you: Quality guaranteed and expert technical support**

---

- Replacement or refund for products not performing as stated on the datasheet
- Valid for 12 months from date of delivery
- Response to your inquiry within 24 hours
- We provide support in Chinese, English, French, German, Japanese and Spanish
- Extensive multi-media technical resources to help you
- We investigate all quality concerns to ensure our products perform to the highest standards

If the product does not perform as described on this datasheet, we will offer a refund or replacement. For full details of the Abpromise, please visit <https://www.abcam.com/abpromise> or contact our technical team.

### **Terms and conditions**

---

- Guarantee only valid for products bought direct from Abcam or one of our authorized distributors