



Product datasheet

Anti-Amphiregulin antibody ab234750

3 Images

Overview

| | |
|----------------------------|---|
| Product name | Anti-Amphiregulin antibody |
| Description | Rabbit polyclonal to Amphiregulin |
| Host species | Rabbit |
| Tested applications | Suitable for: IHC-P, ICC/IF |
| Species reactivity | Reacts with: Human |
| Immunogen | <p>Recombinant fragment corresponding to Human Amphiregulin aa 107-148. Sequence:</p> <p>VVKPPQNKTESENTSDKPKRKKKGGKNGKNRRNRKKN PCNA</p> <p>Database link: P15514</p> <p style="text-align: right;"> Run BLAST with  Run BLAST with</p> |
| Positive control | IHC-P: Human breast cancer and colon cancer tissues. ICC/IF: HeLa cells. |
| General notes | <p>Reproducibility is key to advancing scientific discovery and accelerating scientists' next breakthrough.</p> <p>Abcam is leading the way with our range of recombinant antibodies, knockout-validated antibodies and knockout cell lines, all of which support improved reproducibility.</p> <p>We are also planning to innovate the way in which we present recommended applications and species on our product datasheets, so that only applications & species that have been tested in our own labs, our suppliers or by selected trusted collaborators are covered by our Abpromise™ guarantee.</p> <p>In preparation for this, we have started to update the applications & species that this product is Abpromise guaranteed for.</p> <p>We are also updating the applications & species that this product has been “predicted to work with,” however this information is not covered by our Abpromise guarantee.</p> <p>Applications & species from publications and Abreviews that have not been tested in our own labs or in those of our suppliers are not covered by the Abpromise guarantee.</p> <p>Please check that this product meets your needs before purchasing. If you have any questions, special requirements or concerns, please send us an inquiry and/or contact our Support team ahead of purchase. Recommended alternatives for this product can be found below, as well as customer reviews and Q&As.</p> |

Properties

| | |
|-----------------------------|---|
| Form | Liquid |
| Storage instructions | Shipped at 4°C. Store at +4°C short term (1-2 weeks). Upon delivery aliquot. Store at -20°C long term. Avoid freeze / thaw cycle. |
| Storage buffer | pH: 7.40 Constituents: PBS, 50% Glycerol, 0.03% Proclin 300 |
| Purity | Protein G purified |
| Purification notes | Purity >95%. |
| Clonality | Polyclonal |
| Isotype | IgG |

Applications

Our [Abpromise guarantee](#) covers the use of **ab234750** in the following tested applications.

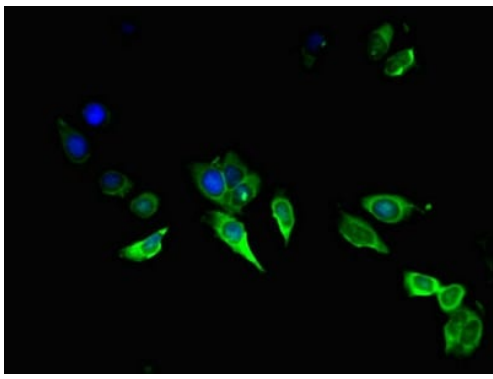
The application notes include recommended starting dilutions; optimal dilutions/concentrations should be determined by the end user.

| Application | Abreviews | Notes |
|-------------|-----------|---------------|
| IHC-P | | 1/20 - 1/200. |
| ICC/IF | | 1/50 - 1/200. |

Target

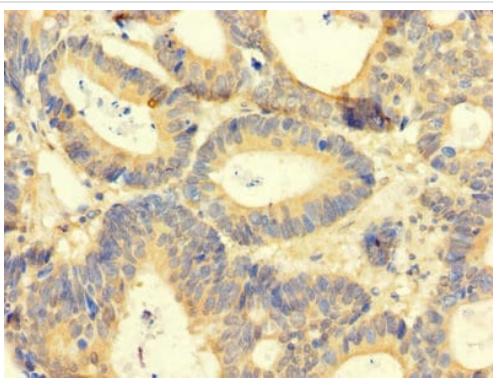
| | |
|------------------------------|---|
| Function | Bifunctional growth-modulating glycoprotein. Inhibits growth of several human carcinoma cells in culture and stimulates proliferation of human fibroblasts and certain other tumor cells. |
| Sequence similarities | Belongs to the amphiregulin family. Contains 1 EGF-like domain. |
| Cellular localization | Membrane. |

Images



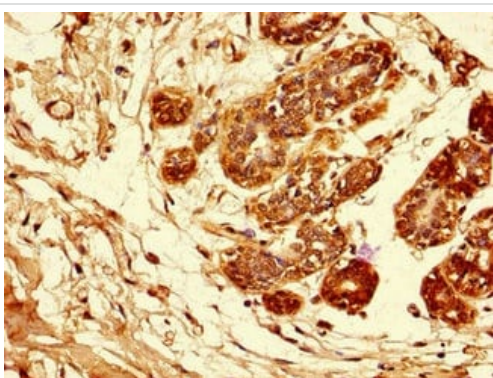
Immunocytochemistry/ Immunofluorescence - Anti-Amphiregulin antibody (ab234750)

HeLa (human epithelial cell line from cervix adenocarcinoma) cells labeling Amphiregulin (green) using ab234750 at 1/100 dilution in ICC/IF, followed by Alexa Fluor 488[®] conjugated Goat Anti-Rabbit IgG (H+L).



Immunohistochemistry (Formalin/PFA-fixed paraffin-embedded sections) - Anti-Amphiregulin antibody (ab234750)

Paraffin-embedded human colon cancer tissue stained for Amphiregulin using ab234750 at 1/100 dilution in immunohistochemical analysis.



Immunohistochemistry (Formalin/PFA-fixed paraffin-embedded sections) - Anti-Amphiregulin antibody (ab234750)

Paraffin-embedded human breast cancer tissue stained for Amphiregulin using ab234750 at 1/100 dilution in immunohistochemical analysis.

Please note: All products are "FOR RESEARCH USE ONLY. NOT FOR USE IN DIAGNOSTIC PROCEDURES"

Our Abpromise to you: Quality guaranteed and expert technical support

- Replacement or refund for products not performing as stated on the datasheet
- Valid for 12 months from date of delivery
- Response to your inquiry within 24 hours

- We provide support in Chinese, English, French, German, Japanese and Spanish
- Extensive multi-media technical resources to help you
- We investigate all quality concerns to ensure our products perform to the highest standards

If the product does not perform as described on this datasheet, we will offer a refund or replacement. For full details of the Abpromise, please visit <https://www.abcam.com/abpromise> or contact our technical team.

Terms and conditions

- Guarantee only valid for products bought direct from Abcam or one of our authorized distributors