

Product datasheet

Anti-Anillin antibody ab84676

★★★★★ 1 Abreviews 2 Images

Overview

Product name	Anti-Anillin antibody
Description	Rabbit polyclonal to Anillin
Host species	Rabbit
Tested applications	Suitable for: IHC-P
Species reactivity	Reacts with: Human Predicted to work with: Rabbit, Cow, Dog, Pig, Chimpanzee, Rhesus monkey, Gorilla, Orangutan, Elephant
Immunogen	Synthetic peptide (the amino acid sequence is considered to be commercially sensitive) corresponding to a region within residue 1074 - 1124 of Human Anillin (NP_061155.2)
Positive control	Colon carcinoma; breast carcinoma.
General notes	<p>Reproducibility is key to advancing scientific discovery and accelerating scientists' next breakthrough.</p> <p>Abcam is leading the way with our range of recombinant antibodies, knockout-validated antibodies and knockout cell lines, all of which support improved reproducibility.</p> <p>We are also planning to innovate the way in which we present recommended applications and species on our product datasheets, so that only applications & species that have been tested in our own labs, our suppliers or by selected trusted collaborators are covered by our Abpromise™ guarantee.</p> <p>In preparation for this, we have started to update the applications & species that this product is Abpromise guaranteed for.</p> <p>We are also updating the applications & species that this product has been “predicted to work with,” however this information is not covered by our Abpromise guarantee.</p> <p>Applications & species from publications and Abreviews that have not been tested in our own labs or in those of our suppliers are not covered by the Abpromise guarantee.</p> <p>Please check that this product meets your needs before purchasing. If you have any questions, special requirements or concerns, please send us an inquiry and/or contact our Support team ahead of purchase. Recommended alternatives for this product can be found below, as well as customer reviews and Q&As.</p>

Properties

Form	Liquid
Storage instructions	Shipped at 4°C. Upon delivery aliquot and store at -20°C. Avoid freeze / thaw cycles.
Storage buffer	pH: 6.8 Preservative: 0.09% Sodium azide Constituents: 0.1% BSA, Tris buffered saline
Purity	Immunogen affinity purified
Clonality	Polyclonal
Isotype	IgG

Applications

Our [Abpromise guarantee](#) covers the use of **ab84676** in the following tested applications.

The application notes include recommended starting dilutions; optimal dilutions/concentrations should be determined by the end user.

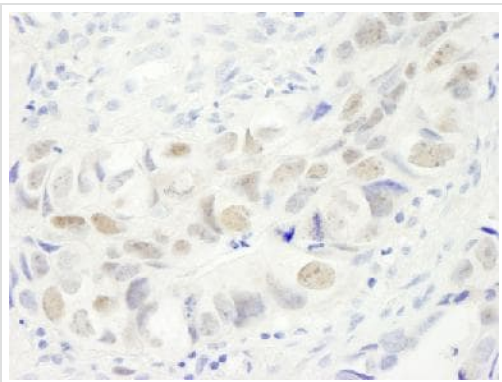
Application	Abreviews	Notes
IHC-P	★★★★☆	

Application notes	<p>IHC-P: 1/100 - 1/500. Antigen retrieval with citrate buffer may enhance staining. Note: expected to work on frozen sections.</p> <p>Not yet tested in other applications. Optimal dilutions/concentrations should be determined by the end user.</p>
--------------------------	---

Target

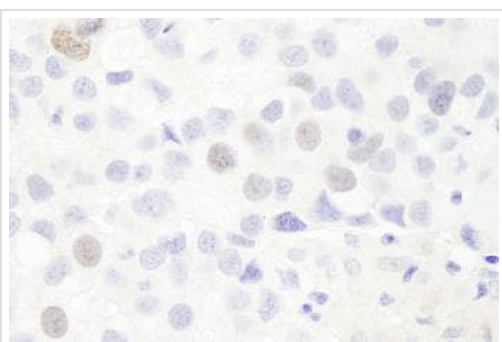
Function	Required for cytokinesis. Essential for the structural integrity of the cleavage furrow and for completion of cleavage furrow ingression.
Tissue specificity	Ubiquitously expressed. Present at highest levels in the brain, at high levels in the placenta and testis, at intermediate levels in the intestine, ovary, skeletal muscle and thymus and at lower levels in heart, kidney, liver, lung, pancreas, prostate and spleen. Overexpressed in many tumor types including breast, colorectal, endometrial, hepatic, kidney, lung, ovarian and pancreatic tumors.
Sequence similarities	Contains 1 PH domain.
Developmental stage	Expressed in fetal brain, heart, kidney, liver, lung, skeletal muscle, spleen and thymus. In dividing cells expression increases during S and G2 phases, peaks at mitosis and subsequently drops as cells enter G1 phase.
Post-translational modifications	Phosphorylated during mitosis. Ubiquitinated, and this requires FZR1/CDH1.
Cellular localization	Nucleus. Cytoplasm > cytoskeleton. Cytoplasm > cell cortex. Mainly found in the nucleus during interphase. Colocalizes with cortical F-actin upon nuclear envelope breakdown in mitosis and subsequently concentrates in the area of the prospective contractile ring in anaphase. This pattern persists until telophase, when the protein becomes concentrated in the midbody.

Images



Immunohistochemistry (Formalin/PFA-fixed paraffin-embedded sections) - Anti-Anillin antibody (ab84676)

Immunohistochemistry analysis of formalin-fixed, paraffin-embedded Human colon carcinoma using 1/250 ab84676, followed by DAB staining.



Immunohistochemistry (Formalin/PFA-fixed paraffin-embedded sections) - Anti-Anillin antibody (ab84676)

Immunohistochemistry analysis of formalin-fixed, paraffin-embedded Human breast carcinoma using 1/250 ab84676, followed by DAB staining.

Please note: All products are "FOR RESEARCH USE ONLY. NOT FOR USE IN DIAGNOSTIC PROCEDURES"

Our Abpromise to you: Quality guaranteed and expert technical support

- Replacement or refund for products not performing as stated on the datasheet
- Valid for 12 months from date of delivery
- Response to your inquiry within 24 hours
- We provide support in Chinese, English, French, German, Japanese and Spanish
- Extensive multi-media technical resources to help you
- We investigate all quality concerns to ensure our products perform to the highest standards

If the product does not perform as described on this datasheet, we will offer a refund or replacement. For full details of the Abpromise, please visit <https://www.abcam.com/abpromise> or contact our technical team.

Terms and conditions

- Guarantee only valid for products bought direct from Abcam or one of our authorized distributors