

Product datasheet

Anti-Anillin antibody [CL0303] ab211872

★★★★☆ 3 Abreviews 2 References 14 Images

Overview

Product name	Anti-Anillin antibody [CL0303]
Description	Mouse monoclonal [CL0303] to Anillin
Host species	Mouse
Tested applications	Suitable for: ICC/IF, IHC-P, WB
Species reactivity	Reacts with: Human
Immunogen	<p>Recombinant fragment corresponding to Human Anillin aa 333-468. Sequence:</p> <p>MKSTLSQTVPSKGELSREICLQSQSKDKSTTPGGTGKIPF LERFGERCQ EHSKESPARSTPHRTPHPTNTKAIQERLFKQDTSSSTTHLA QQLKQERQ KELACLGRGFDKGNWSAEKGGNSKSKQLETKQETH</p> <p>Database link: Q9NQW6</p> <p style="text-align: right;"> Run BLAST with Run BLAST with </p>
Epitope	Binds to an epitope located within the peptide sequence LRGRFDKGNWSAEK (438-452 aa) as determined by overlapping synthetic peptides.
Positive control	U251 cell line lysate; Human colorectal cancer, Human lung cancer, Human testis, Human colon, Human stomach, Human tonsil and Human liver tissues; HeLa, A431, MCF7, U2OS and U251 cells.
General notes	<p>Marker for Nucleus without Nucleoli</p> <p>Reproducibility is key to advancing scientific discovery and accelerating scientists' next breakthrough.</p> <p>Abcam is leading the way with our range of recombinant antibodies, knockout-validated antibodies and knockout cell lines, all of which support improved reproducibility.</p> <p>We are also planning to innovate the way in which we present recommended applications and species on our product datasheets, so that only applications & species that have been tested in our own labs, our suppliers or by selected trusted collaborators are covered by our Abpromise™ guarantee.</p> <p>In preparation for this, we have started to update the applications & species that this product is Abpromise guaranteed for.</p>

We are also updating the applications & species that this product has been “predicted to work with,” however this information is not covered by our Abpromise guarantee.

Applications & species from publications and Abreviews that have not been tested in our own labs or in those of our suppliers are not covered by the Abpromise guarantee.

Please check that this product meets your needs before purchasing. If you have any questions, special requirements or concerns, please send us an inquiry and/or contact our Support team ahead of purchase. Recommended alternatives for this product can be found below, as well as customer reviews and Q&As.

Properties

Form	Liquid
Storage instructions	Shipped at 4°C. Store at +4°C short term (1-2 weeks). Upon delivery aliquot. Store at -20°C long term. Avoid freeze / thaw cycle.
Storage buffer	pH: 7.20 Preservative: 0.02% Sodium azide Constituents: 40% Glycerol, 59% PBS
Purity	Protein A purified
Clonality	Monoclonal
Clone number	CL0303
Isotype	IgG1

Applications

Our [Abpromise guarantee](#) covers the use of **ab211872** in the following tested applications.

The application notes include recommended starting dilutions; optimal dilutions/concentrations should be determined by the end user.

Application	Abreviews	Notes
ICC/IF	★★★★☆	Use a concentration of 2 - 10 µg/ml.
IHC-P		1/50 - 1/200. Perform heat mediated antigen retrieval with citrate buffer pH 6 before commencing with IHC staining protocol.
WB	★★★★★	1/500 - 1/1000. Predicted molecular weight: 124 kDa.

Target

Function	Required for cytokinesis. Essential for the structural integrity of the cleavage furrow and for completion of cleavage furrow ingression.
Tissue specificity	Ubiquitously expressed. Present at highest levels in the brain, at high levels in the placenta and testis, at intermediate levels in the intestine, ovary, skeletal muscle and thymus and at lower levels in heart, kidney, liver, lung, pancreas, prostate and spleen. Overexpressed in many tumor types including breast, colorectal, endometrial, hepatic, kidney, lung, ovarian and pancreatic tumors.

Sequence similarities

Contains 1 PH domain.

Developmental stage

Expressed in fetal brain, heart, kidney, liver, lung, skeletal muscle, spleen and thymus. In dividing cells expression increases during S and G2 phases, peaks at mitosis and subsequently drops as cells enter G1 phase.

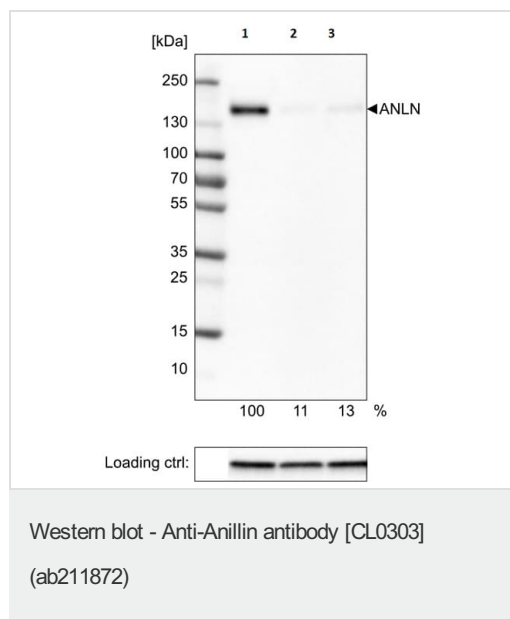
Post-translational modifications

Phosphorylated during mitosis.
Ubiquitinated, and this requires FZR1/CDH1.

Cellular localization

Nucleus. Cytoplasm > cytoskeleton. Cytoplasm > cell cortex. Mainly found in the nucleus during interphase. Colocalizes with cortical F-actin upon nuclear envelope breakdown in mitosis and subsequently concentrates in the area of the prospective contractile ring in anaphase. This pattern persists until telophase, when the protein becomes concentrated in the midbody.

Images

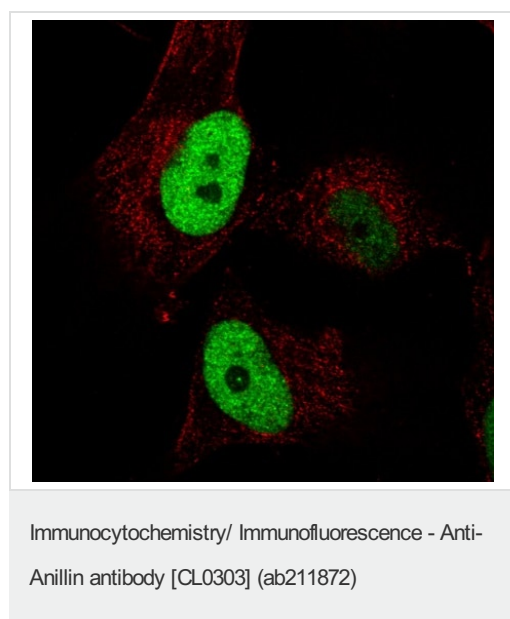


All lanes : Anti-Anillin antibody [CL0303] (ab211872)

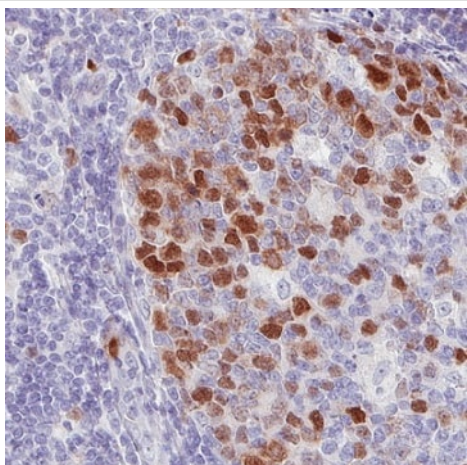
All lanes : U-251 cells, transfected with control siRNA

Predicted band size: 124 kDa

Downregulation of antibody signal confirms target specificity. Remaining % intensity, relative control lane, is indicated. Anti-GAPDH monoclonal antibody was used as loading control.

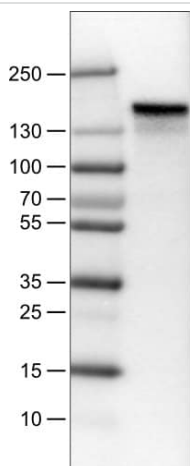


Immunofluorescent analysis of formalin fixed, Triton X-100 permeabilized U251 cells labeling Anillin with ab211872 at 4 µg/ml dilution showing cell cycle dependent nuclear (without nucleoli) staining in green. Microtubules are visualized in red.



Immunohistochemical analysis of paraffin-embedded, formalin fixed Human tonsil tissue labeling Anillin with ab211872 at 1/50 dilution.

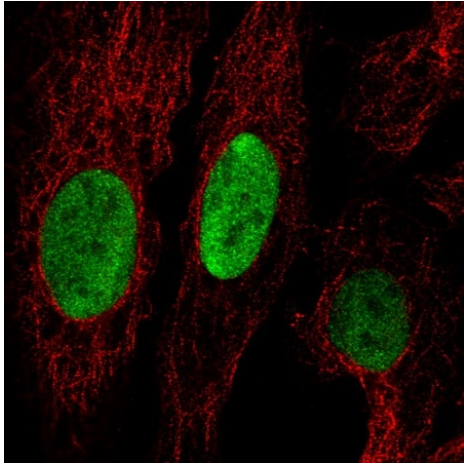
Immunohistochemistry (Formalin/PFA-fixed paraffin-embedded sections) - Anti-Anillin antibody [CL0303] (ab211872)



Anti-Anillin antibody [CL0303] (ab211872) at 1/500 dilution + U251 cell line lysate

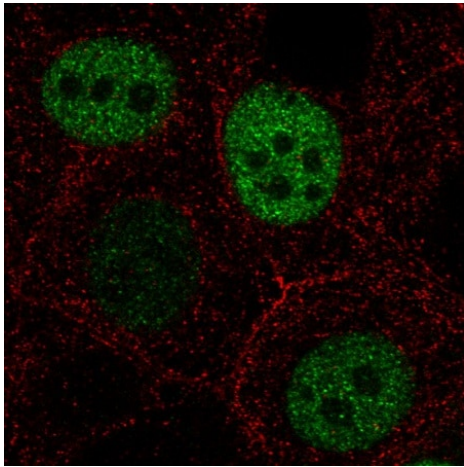
Predicted band size: 124 kDa

Western blot - Anti-Anillin antibody [CL0303] (ab211872)



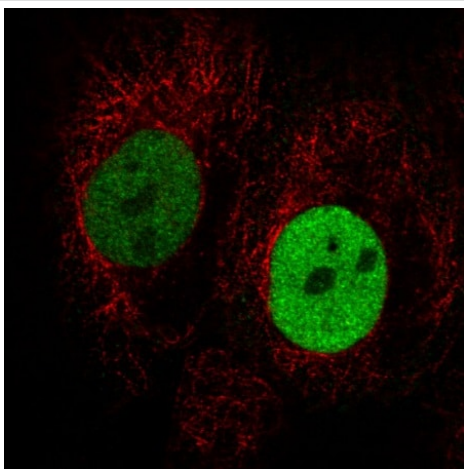
Immunocytochemistry/ Immunofluorescence - Anti-Anillin antibody [CL0303] (ab211872)

Immunofluorescent analysis of formalin fixed, Triton X-100 permeabilized U2OS cells labeling Anillin with ab211872 at 4 $\mu\text{g}/\text{ml}$ dilution showing cell cycle dependent nuclear (without nucleoli) staining in green. Microtubules are visualized in red.



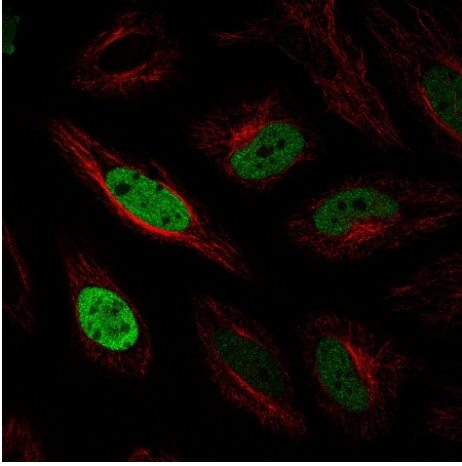
Immunocytochemistry/ Immunofluorescence - Anti-Anillin antibody [CL0303] (ab211872)

Immunofluorescent analysis of formalin fixed, Triton X-100 permeabilized MCF7 cells labeling Anillin with ab211872 at 4 $\mu\text{g}/\text{ml}$ dilution showing cell cycle dependent nuclear (without nucleoli) staining in green. Microtubules are visualized in red.



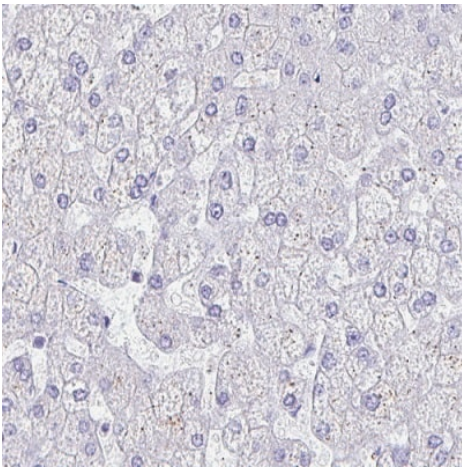
Immunocytochemistry/ Immunofluorescence - Anti-Anillin antibody [CL0303] (ab211872)

Immunofluorescent analysis of formalin fixed, Triton X-100 permeabilized A431 cells labeling Anillin with ab211872 at 4 $\mu\text{g}/\text{ml}$ dilution showing cell cycle dependent nuclear (without nucleoli) staining in green. Microtubules are visualized in red.



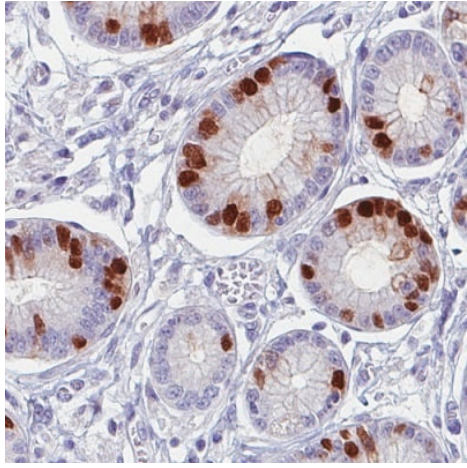
Immunocytochemistry/ Immunofluorescence - Anti-Anillin antibody [CL0303] (ab211872)

Immunofluorescent analysis of formalin fixed, Triton X-100 permealized HeLa cells labeling Anillin with ab211872 at 4 $\mu\text{g/ml}$ dilution showing cell cycle dependent nuclear (without nucleoli) staining in green. Microtubules are visualized in red.



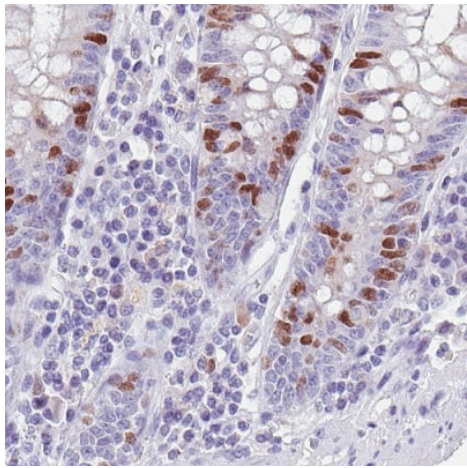
Immunohistochemistry (Formalin/PFA-fixed paraffin-embedded sections) - Anti-Anillin antibody [CL0303] (ab211872)

Negative control: Immunohistochemical analysis of paraffin-embedded, formalin fixed Human liver tissue labeling Anillin with ab211872 at 1/50 dilution shows absence of staining.



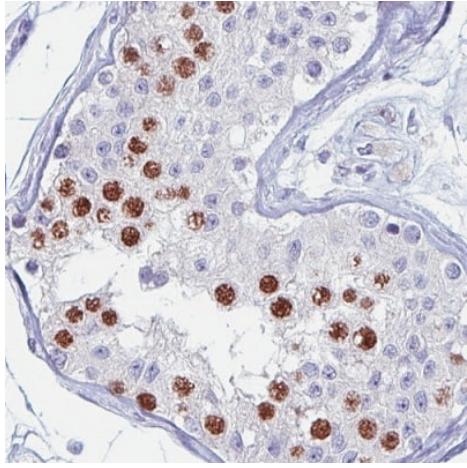
Immunohistochemical analysis of paraffin-embedded, formalin fixed Human stomach tissue labeling Anillin with ab211872 at 1/50 dilution.

Immunohistochemistry (Formalin/PFA-fixed paraffin-embedded sections) - Anti-Anillin antibody [CL0303] (ab211872)



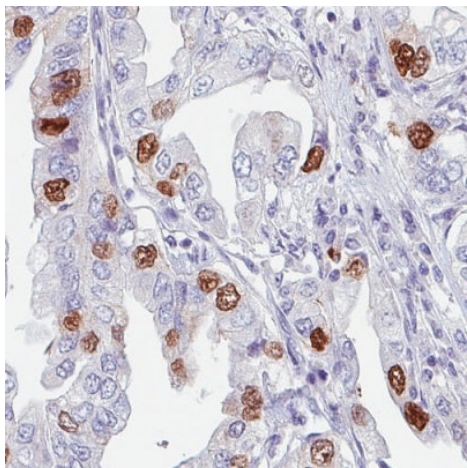
Immunohistochemical analysis of paraffin-embedded, formalin fixed Human colon tissue labeling Anillin with ab211872 at 1/50 dilution.

Immunohistochemistry (Formalin/PFA-fixed paraffin-embedded sections) - Anti-Anillin antibody [CL0303] (ab211872)



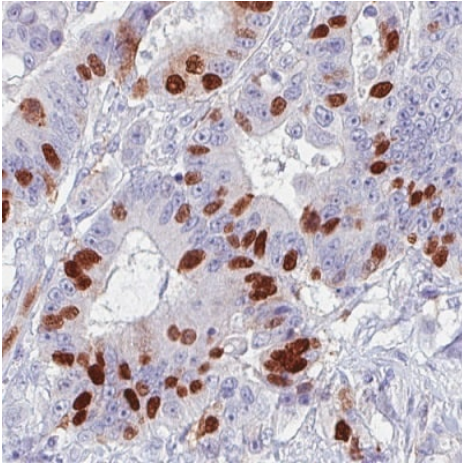
Immunohistochemistry (Formalin/PFA-fixed paraffin-embedded sections) - Anti-Anillin antibody [CL0303] (ab211872)

Immunohistochemical analysis of paraffin-embedded, formalin fixed Human testis tissue labeling Anillin with ab211872 at 1/50 dilution.



Immunohistochemistry (Formalin/PFA-fixed paraffin-embedded sections) - Anti-Anillin antibody [CL0303] (ab211872)

Immunohistochemical analysis of paraffin-embedded, formalin fixed Human lung cancer tissue labeling Anillin with ab211872 at 1/50 dilution.



Immunohistochemical analysis of paraffin-embedded, formalin fixed Human colorectal cancer tissue labeling Anillin with ab211872 at 1/50 dilution.

Immunohistochemistry (Formalin/PFA-fixed paraffin-embedded sections) - Anti-Anillin antibody [CL0303] (ab211872)

Please note: All products are "FOR RESEARCH USE ONLY. NOT FOR USE IN DIAGNOSTIC PROCEDURES"

Our Abpromise to you: Quality guaranteed and expert technical support

- Replacement or refund for products not performing as stated on the datasheet
- Valid for 12 months from date of delivery
- Response to your inquiry within 24 hours
- We provide support in Chinese, English, French, German, Japanese and Spanish
- Extensive multi-media technical resources to help you
- We investigate all quality concerns to ensure our products perform to the highest standards

If the product does not perform as described on this datasheet, we will offer a refund or replacement. For full details of the Abpromise, please visit <https://www.abcam.com/abpromise> or contact our technical team.

Terms and conditions

- Guarantee only valid for products bought direct from Abcam or one of our authorized distributors