


Product datasheet

Anti-ANKLE2 antibody ab225905

2 Images

Overview

Product name	Anti-ANKLE2 antibody
Description	Rabbit polyclonal to ANKLE2
Host species	Rabbit
Tested applications	Suitable for: WB, IP
Species reactivity	Reacts with: Human Predicted to work with: Gorilla, Orangutan 
Immunogen	Synthetic peptide within Human ANKLE2 aa 800-850. The exact sequence is proprietary. (NP_055929.1). Database link: Q86XL3
Positive control	WB: HeLa and HEK-293T whole cell lysate. IP: HeLa whole cell lysate.

Properties

Form	Liquid
Storage instructions	Shipped at 4°C. Store at +4°C short term (1-2 weeks). Upon delivery aliquot. Store at -20°C long term. Avoid freeze / thaw cycle.
Storage buffer	Preservative: 0.09% Sodium azide Constituents: 0.1% BSA, Tris buffered saline
Purity	Immunogen affinity purified
Purification notes	ab225905 was affinity purified using an epitope specific to ANKLE2 immobilized on solid support.
Clonality	Polyclonal
Isotype	IgG

Applications

Our [Abpromise guarantee](#) covers the use of **ab225905** in the following tested applications.

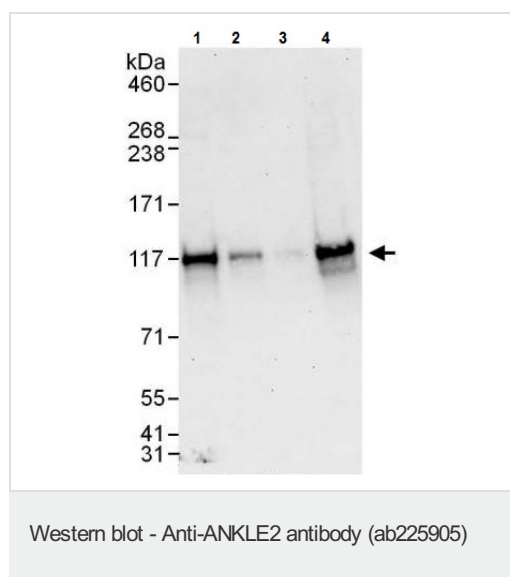
The application notes include recommended starting dilutions; optimal dilutions/concentrations should be determined by the end user.

Application	Abreviews	Notes
WB		1/2000 - 1/10000. Predicted molecular weight: 104 kDa.
IP		Use at 2-5 µg/mg of lysate.

Target

Function	Involved in mitotic nuclear envelope reassembly by promoting dephosphorylation of BAF/BANF1 during mitotic exit. Coordinates the control of BAF/BANF1 dephosphorylation by inhibiting VRK1 kinase and promoting dephosphorylation of BAF/BANF1 by protein phosphatase 2A (PP2A), thereby facilitating nuclear envelope assembly. It is unclear whether it acts as a real PP2A regulatory subunit or whether it is involved in recruitment of the PP2A complex.
Sequence similarities	Belongs to the ANKLE2 family. Contains 1 ANK repeat. Contains 1 LEM domain.
Cellular localization	Endoplasmic reticulum membrane.

Images



All lanes : Anti-ANKLE2 antibody (ab225905) at 0.04 µg/ml

Lane 1 : HeLa (human epithelial cell line from cervix adenocarcinoma) whole cell lysate at 50 µg

Lane 2 : HeLa (human epithelial cell line from cervix adenocarcinoma) whole cell lysate at 15 µg

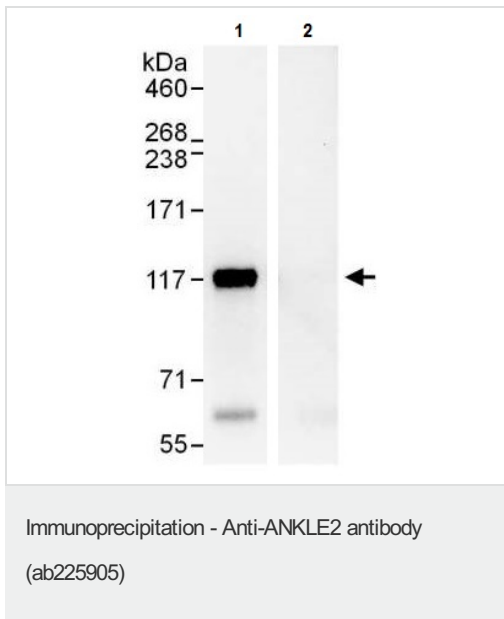
Lane 3 : HeLa (human epithelial cell line from cervix adenocarcinoma) whole cell lysate at 5 µg

Lane 4 : HEK-293T (human epithelial cell line from embryonic kidney transformed with large T antigen) whole cell lysate at 50 µg

Developed using the ECL technique.

Predicted band size: 104 kDa

Exposure time: 30 seconds



ANKLE2 was immunoprecipitated from HeLa (human epithelial cell line from cervix adenocarcinoma) whole cell lysate (1 mg for IP, 20% of IP loaded) with ab225905 at 3 µg/mg lysate. Western blot was performed from the immunoprecipitate using ab225905 at 1 µg/ml.

Lane 1: ab225905 IP in HeLa whole cell lysate.

Lane 2: Control IgG IP in HeLa whole cell lysate.

Detection: Chemiluminescence with exposure time of 10 seconds.

Please note: All products are "FOR RESEARCH USE ONLY. NOT FOR USE IN DIAGNOSTIC PROCEDURES"

Our Abpromise to you: Quality guaranteed and expert technical support

- Replacement or refund for products not performing as stated on the datasheet
- Valid for 12 months from date of delivery
- Response to your inquiry within 24 hours
- We provide support in Chinese, English, French, German, Japanese and Spanish
- Extensive multi-media technical resources to help you
- We investigate all quality concerns to ensure our products perform to the highest standards

If the product does not perform as described on this datasheet, we will offer a refund or replacement. For full details of the Abpromise, please visit <https://www.abcam.com/abpromise> or contact our technical team.

Terms and conditions

- Guarantee only valid for products bought direct from Abcam or one of our authorized distributors