

Product datasheet

Anti-ANKRD20A1 antibody ab196802

1 Image

Overview

Product name	Anti-ANKRD20A1 antibody
Description	Rabbit polyclonal to ANKRD20A1
Host species	Rabbit

Tested Applications & Species

Application	Species
WB	Mouse

See all applications and species data

Immunogen	Synthetic peptide corresponding to Human ANKRD20A1 (internal sequence). Database link: Q5TYW2
Positive control	NIH/3T3 cell extracts

Properties


Form	Liquid
Storage instructions	Shipped at 4°C. Store at +4°C short term (1-2 weeks). Upon delivery aliquot. Store at -20°C long term. Avoid freeze / thaw cycle.
Storage buffer	pH: 7.40 Preservative: 0.02% Sodium azide Constituents: 49% PBS, 50% Glycerol (glycerin, glycerine), 0.87% Sodium chloride PBS without Mg ²⁺ and Ca ²⁺
Purity	Immunogen affinity purified
Clonality	Polyclonal
Isotype	IgG

Applications

The Abpromise guarantee Our [Abpromise guarantee](#) covers the use of **ab196802** in the following tested applications.

The application notes include recommended starting dilutions; optimal dilutions/concentrations should be determined by the end user.

 Guaranteed Tested applications are guaranteed to work and covered by our Abpromise guarantee.	 Predicted Predicted to work for this combination of applications and species but not guaranteed.	 Incompatible Does not work for this combination of applications and species.
--	--	--

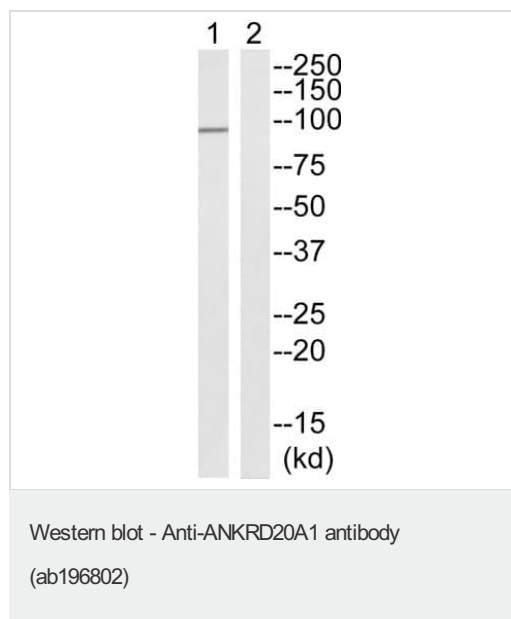
Application	Species
WB	 Mouse

Application	Abreviews	Notes
WB		1/500 - 1/3000. Predicted molecular weight: 94 kDa.

Target

Sequence similarities Contains 5 ANK repeats.

Images



All lanes : Anti-ANKRD20A1 antibody (ab196802) at 1/500 dilution

Lane 1 : NIH/3T3 cell extract

Lane 2 : NIH/3T3 cell extract with synthesized peptide

Predicted band size: 94 kDa

Please note: All products are "FOR RESEARCH USE ONLY. NOT FOR USE IN DIAGNOSTIC PROCEDURES"

Our Abpromise to you: Quality guaranteed and expert technical support

- Replacement or refund for products not performing as stated on the datasheet
- Valid for 12 months from date of delivery
- Response to your inquiry within 24 hours

- We provide support in Chinese, English, French, German, Japanese and Spanish
- Extensive multi-media technical resources to help you
- We investigate all quality concerns to ensure our products perform to the highest standards

If the product does not perform as described on this datasheet, we will offer a refund or replacement. For full details of the Abpromise, please visit <https://www.abcam.com/abpromise> or contact our technical team.

Terms and conditions

- Guarantee only valid for products bought direct from Abcam or one of our authorized distributors