


Product datasheet

Anti-Annexin-2/ANXA2 (phospho S26) antibody
ab192593

1 Image

Overview

Product name	Anti-Annexin-2/ANXA2 (phospho S26) antibody
Description	Rabbit polyclonal to Annexin-2/ANXA2 (phospho S26)
Host species	Rabbit
Specificity	ab192593 detects endogenous levels of Annexin-2/ANXA2 only when phosphorylated at serine 26.
Tested applications	Suitable for: WB
Species reactivity	Reacts with: Human Predicted to work with: Mouse, Rat 
Immunogen	Synthetic peptide corresponding to Human Annexin-2/ANXA2 (phospho S26) conjugated to keyhole limpet haemocyanin. Database link: P07355
Positive control	Extracts from HepG2, Jurkat and K562 cells.
General notes	This product was previously labelled as Annexin A2

Reproducibility is key to advancing scientific discovery and accelerating scientists' next breakthrough.

Abcam is leading the way with our range of recombinant antibodies, knockout-validated antibodies and knockout cell lines, all of which support improved reproducibility.

We are also planning to innovate the way in which we present recommended applications and species on our product datasheets, so that only applications & species that have been tested in our own labs, our suppliers or by selected trusted collaborators are covered by our Abpromise™ guarantee.

In preparation for this, we have started to update the applications & species that this product is Abpromise guaranteed for.

We are also updating the applications & species that this product has been “predicted to work with,” however this information is not covered by our Abpromise guarantee.

Applications & species from publications and Abreviews that have not been tested in our own labs or in those of our suppliers are not covered by the Abpromise guarantee.

Please check that this product meets your needs before purchasing. If you have any questions,

special requirements or concerns, please send us an inquiry and/or contact our Support team ahead of purchase. Recommended alternatives for this product can be found below, as well as customer reviews and Q&As.

Properties

Form	Liquid
Storage instructions	Shipped at 4°C. Store at +4°C short term (1-2 weeks). Upon delivery aliquot. Store at -20°C long term. Avoid freeze / thaw cycle.
Storage buffer	pH: 7.40 Preservative: 0.02% Sodium azide Constituents: 49% PBS, 50% Glycerol (glycerin, glycerine), 0.87% Sodium chloride PBS is without Mg ²⁺ and Ca ²⁺ .
Purity	Immunogen affinity purified
Purification notes	ab192593 was purified by affinity-chromatography using epitope-specific phosphopeptide. Non-phospho specific antibodies were removed by chromatography using non-phosphopeptide.
Clonality	Polyclonal
Isotype	IgG

Applications

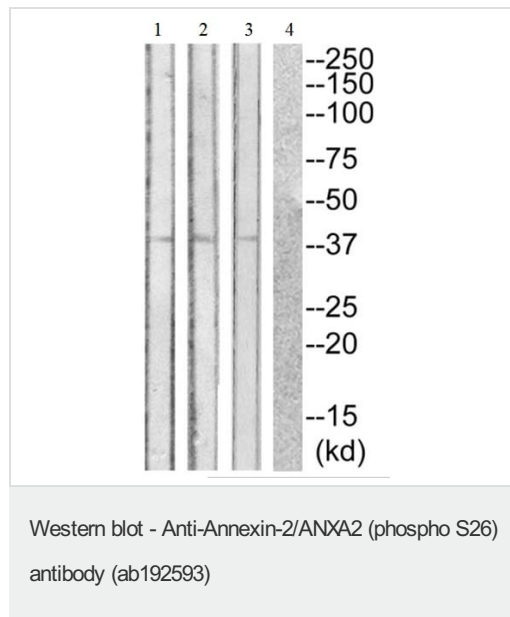
Our [Abpromise guarantee](#) covers the use of **ab192593** in the following tested applications.

The application notes include recommended starting dilutions; optimal dilutions/concentrations should be determined by the end user.

Application	Abreviews	Notes
WB		1/500 - 1/1000. Predicted molecular weight: 39 kDa.

Target

Function	Calcium-regulated membrane-binding protein whose affinity for calcium is greatly enhanced by anionic phospholipids. It binds two calcium ions with high affinity. May be involved in heat-stress response.
Sequence similarities	Belongs to the annexin family. Contains 4 annexin repeats.
Domain	A pair of annexin repeats may form one binding site for calcium and phospholipid.
Post-translational modifications	Phosphorylation of Tyr-24 enhances heat stress-induced translocation to the cell surface. ISGylated.
Cellular localization	Secreted > extracellular space > extracellular matrix > basement membrane. Melanosome. In the lamina beneath the plasma membrane. Identified by mass spectrometry in melanosome fractions from stage I to stage IV. Translocated from the cytoplasm to the cell surface through a Golgi-independent mechanism.



All lanes : Anti-Annexin-2/ANXA2 (phospho S26) antibody (ab192593) at 1/500 dilution

Lane 1 : Extracts from HepG2 cells

Lane 2 : Extracts from Jurkat cells

Lane 3 : Extracts from K562 cells

Lane 4 : Extracts from K562 cells with antigen-specific peptide

Predicted band size: 39 kDa

Please note: All products are "FOR RESEARCH USE ONLY. NOT FOR USE IN DIAGNOSTIC PROCEDURES"

Our Abpromise to you: Quality guaranteed and expert technical support

- Replacement or refund for products not performing as stated on the datasheet
- Valid for 12 months from date of delivery
- Response to your inquiry within 24 hours
- We provide support in Chinese, English, French, German, Japanese and Spanish
- Extensive multi-media technical resources to help you
- We investigate all quality concerns to ensure our products perform to the highest standards

If the product does not perform as described on this datasheet, we will offer a refund or replacement. For full details of the Abpromise, please visit <https://www.abcam.com/abpromise> or contact our technical team.

Terms and conditions

- Guarantee only valid for products bought direct from Abcam or one of our authorized distributors