




Product datasheet

Anti-Annexin A10/ANXA10 antibody ab2343

1 References 1 Image

Overview

Product name	Anti-Annexin A10/ANXA10 antibody
Description	Goat polyclonal to Annexin A10/ANXA10
Host species	Goat
Tested applications	Suitable for: WB, IHC-P
Species reactivity	Reacts with: Human Predicted to work with: Mouse, Rat, Cow 
Immunogen	Synthetic peptide corresponding to Human Annexin A10/ANXA10 aa 2-14 (N terminal). Sequence: FCGDYVQGTIFPAPN (Peptide available as ab77902)  Run BLAST with  Run BLAST with
Positive control	Recombinant Human Annexin A10/ANXA10 protein (ab123206) can be used as a positive control in WB.
General notes	This product was previously labelled as Annexin A10

Properties

Form	Liquid
Storage instructions	Shipped at 4°C. Upon delivery aliquot and store at -20°C. Avoid freeze / thaw cycles.
Storage buffer	pH: 7.30 Preservative: 0.02% Sodium azide Constituents: Tris buffered saline, 0.5% BSA
Purity	Immunogen affinity purified
Purification notes	Purified from goat serum by ammonium sulphate precipitation followed by antigen affinity chromatography using the immunizing peptide.
Clonality	Polyclonal
Isotype	IgG

Applications

Our [Abpromise guarantee](#) covers the use of **ab2343** in the following tested applications.

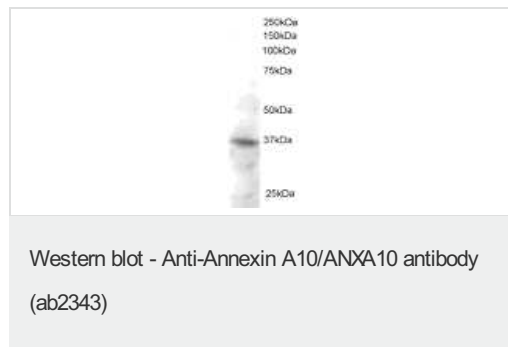
The application notes include recommended starting dilutions; optimal dilutions/concentrations should be determined by the end user.

Application	Abreviews	Notes
WB		Use a concentration of 1 µg/ml. Predicted molecular weight: 37 kDa.
IHC-P		Use a concentration of 3 - 5 µg/ml.

Target

Sequence similarities Belongs to the annexin family.
Contains 4 annexin repeats.

Images



ab2343 staining (4µg/ml) of HeLa lysate (RIPA buffer, 30µg total protein per lane). Primary incubated for 1 hour. Detected by western blot using chemiluminescence. ab2343 staining (4µg/ml) of HeLa lysate (RIPA buffer, 30µg total protein per lane). Primary incubated for 1 hour. Detected by western blot using chemiluminescence.

Please note: All products are "FOR RESEARCH USE ONLY. NOT FOR USE IN DIAGNOSTIC PROCEDURES"

Our Abpromise to you: Quality guaranteed and expert technical support

- Replacement or refund for products not performing as stated on the datasheet
- Valid for 12 months from date of delivery
- Response to your inquiry within 24 hours
- We provide support in Chinese, English, French, German, Japanese and Spanish
- Extensive multi-media technical resources to help you
- We investigate all quality concerns to ensure our products perform to the highest standards

If the product does not perform as described on this datasheet, we will offer a refund or replacement. For full details of the Abpromise, please visit <https://www.abcam.com/abpromise> or contact our technical team.

Terms and conditions

- Guarantee only valid for products bought direct from Abcam or one of our authorized distributors