

Product datasheet

Anti-Annexin A1/ANXA1 antibody [EPR2767(2)]
 ab138512

KO VALIDATED Recombinant RabMAb

2 References 3 Images

Overview

Product name	Anti-Annexin A1/ANXA1 antibody [EPR2767(2)]
Description	Rabbit monoclonal [EPR2767(2)] to Annexin A1/ANXA1
Host species	Rabbit
Tested applications	Suitable for: WB Unsuitable for: Flow Cyt, ICC/IF, IHC-P or IP
Species reactivity	Reacts with: Mouse, Rat, Human
Immunogen	Synthetic peptide within Human Annexin A1/ANXA1 aa 300 to the C-terminus. The exact sequence is proprietary. Database link: P04083
Positive control	C6, Raw264.7, NIH3T3, C2C12, K562, A431, and HeLa whole cell lysate (ab150035)
General notes	This product is a recombinant monoclonal antibody, which offers several advantages including: <ul style="list-style-type: none"> - High batch-to-batch consistency and reproducibility - Improved sensitivity and specificity - Long-term security of supply - Animal-free production For more information see here . Our RabMAb [®] technology is a patented hybridoma-based technology for making rabbit monoclonal antibodies. For details on our patents, please refer to RabMAb[®] patents .

Properties

Form	Liquid
Storage instructions	Shipped at 4°C. Upon delivery aliquot and store at -20°C. Avoid freeze / thaw cycles.
Storage buffer	pH: 7.2 Preservative: 0.01% Sodium azide Constituents: 9% PBS, 40% Glycerol (glycerin, glycerine), 0.05% BSA, 50% Tissue culture supernatant
Purity	Tissue culture supernatant

Clonality	Monoclonal
Clone number	EPR2767(2)
Isotype	IgG

Applications

The Abpromise guarantee Our [Abpromise guarantee](#) covers the use of ab138512 in the following tested applications. The application notes include recommended starting dilutions; optimal dilutions/concentrations should be determined by the end user.

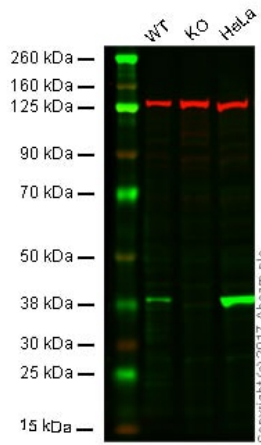
Application	Abreviews	Notes
WB		1/1000 - 1/10000. Detects a band of approximately 35 kDa (predicted molecular weight: 39 kDa).

Application notes Is unsuitable for Flow Cyt, ICC/IF, IHC-P or IP.

Target

Function	Calcium/phospholipid-binding protein which promotes membrane fusion and is involved in exocytosis. This protein regulates phospholipase A2 activity. It seems to bind from two to four calcium ions with high affinity.
Sequence similarities	Belongs to the annexin family. Contains 4 annexin repeats.
Domain	A pair of annexin repeats may form one binding site for calcium and phospholipid.
Post-translational modifications	Phosphorylated by protein kinase C, epidermal growth factor receptor/kinase and TRPM7. Phosphorylation results in loss of the inhibitory activity.
Cellular localization	Nucleus. Cytoplasm. Cell projection > cilium. Basolateral cell membrane. Found in the cilium, nucleus and basolateral cell membrane of ciliated cells in the tracheal endothelium (By similarity). Found in the cytoplasm of type II pneumocytes and alveolar macrophages.

Images



Western blot - Anti-Annexin A1/ANXA1 antibody [EPR2767(2)] (ab138512)

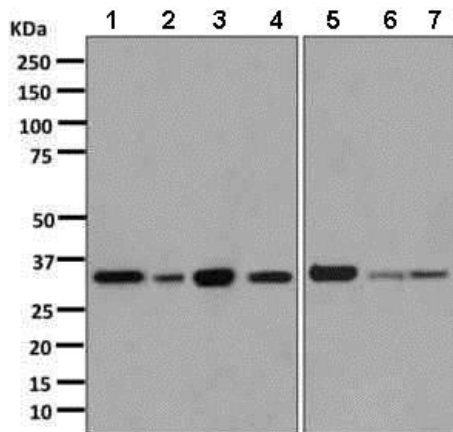
Lane 1: Wild type HAP1 whole cell lysate (20 µg)

Lane 2: Annexin I knockout HAP1 whole cell lysate (20 µg)

Lane 3: HeLa whole cell lysate (20 µg)

Lanes 1 - 3: Merged signal (red and green). Green - ab138512 observed at 40 kDa. Red - loading control, ab18058, observed at 130 kDa.

ab138512 was shown to specifically react with Annexin I when Annexin I knockout samples were used. Wild-type and Annexin I knockout samples were subjected to SDS-PAGE. Ab138512 and ab18058 (Mouse anti Vinculin loading control) were incubated overnight at 4°C at 1/1000 dilution and 1/10000 dilution respectively. Blots were developed with Goat anti-Rabbit IgG H&L (IRDye® 800CW) preabsorbed ab216773 and Goat anti-Mouse IgG H&L (IRDye® 680RD) preabsorbed ab216776 secondary antibodies at 1/10000 dilution for 1 hour at room temperature before imaging.



Western blot - Anti-Annexin A1/ANXA1 antibody [EPR2767(2)] (ab138512)

All lanes : Anti-Annexin A1/ANXA1 antibody [EPR2767(2)] (ab138512) at 1/1000 dilution

Lane 1 : C6 cell lysate

Lane 2 : Raw264.7 cell lysate

Lane 3 : NIH3T3 cell lysate

Lane 4 : C2C12 cell lysate

Lane 5 : K562 cell lysate

Lane 6 : A431 cell lysate

Lane 7 : HeLa cell lysate

Secondary

All lanes : HRP labelled goat anti-rabbit at 1/2000 dilution

Predicted band size: 39 kDa

Why choose a recombinant antibody?



Research with confidence
Consistent and reproducible results



Long-term and scalable supply
Recombinant technology



Success from the first experiment
Confirmed specificity



Ethical standards compliant
Animal-free production

Anti-Annexin A1/ANXA1 antibody [EPR2767(2)]
(ab138512)

Please note: All products are "FOR RESEARCH USE ONLY. NOT FOR USE IN DIAGNOSTIC PROCEDURES"

Our Abpromise to you: Quality guaranteed and expert technical support

- Replacement or refund for products not performing as stated on the datasheet
- Valid for 12 months from date of delivery
- Response to your inquiry within 24 hours
- We provide support in Chinese, English, French, German, Japanese and Spanish
- Extensive multi-media technical resources to help you
- We investigate all quality concerns to ensure our products perform to the highest standards

If the product does not perform as described on this datasheet, we will offer a refund or replacement. For full details of the Abpromise, please visit <https://www.abcam.com/abpromise> or contact our technical team.

Terms and conditions

- Guarantee only valid for products bought direct from Abcam or one of our authorized distributors