

## Product datasheet

# Anti-ANP32D antibody ab192320

1 Image

### Overview

<b>Product name</b>	Anti-ANP32D antibody
<b>Description</b>	Rabbit polyclonal to ANP32D
<b>Host species</b>	Rabbit
<b>Specificity</b>	Detects endogenous levels of ANP32D protein.

### Tested Applications & Species

Application	Species
WB	 Human

See all applications and species data 

**Immunogen** Synthetic peptide within Human ANP32D. The exact sequence is proprietary.  
Database link: [O95626](#)

**Positive control** HeLa whole cell lysate, mouse liver and rat liver tissue lysates.

**General notes**

The Life Science industry has been in the grips of a reproducibility crisis for a number of years. Abcam is leading the way in addressing the problem with our range of recombinant monoclonal antibodies and knockout edited cell lines for gold-standard validation.

One factor contributing to the crisis is the use of antibodies that are not suitable. This can lead to misleading results and the use of incorrect data informing project assumptions and direction. To help address this challenge, we have introduced an application and species grid on our primary antibody datasheets to make it easy to simplify identification of the right antibody for your needs.

Learn more [here](#).

### Properties


<b>Form</b>	Liquid
<b>Storage instructions</b>	Shipped at 4°C. Store at +4°C short term (1-2 weeks). Upon delivery aliquot. Store at -20°C long term. Avoid freeze / thaw cycle.
<b>Storage buffer</b>	pH: 7.20 Preservative: 0.05% Sodium azide Constituent: 99% PBS


<b>Purity</b>	Immunogen affinity purified
<b>Purification notes</b>	Purity of ab192320 is > 95% (by SDS-PAGE).
<b>Clonality</b>	Polyclonal
<b>Isotype</b>	IgG

## Applications

**The Abpromise guarantee** Our [Abpromise guarantee](#) covers the use of **ab192320** in the following tested applications.

The application notes include recommended starting dilutions; optimal dilutions/concentrations should be determined by the end user.

 <b>Guaranteed</b> Tested applications are guaranteed to work and covered by our Abpromise guarantee.	 <b>Predicted</b> Predicted to work for this combination of applications and species but not guaranteed.	 <b>Incompatible</b> Does not work for this combination of applications and species.
--	--	--

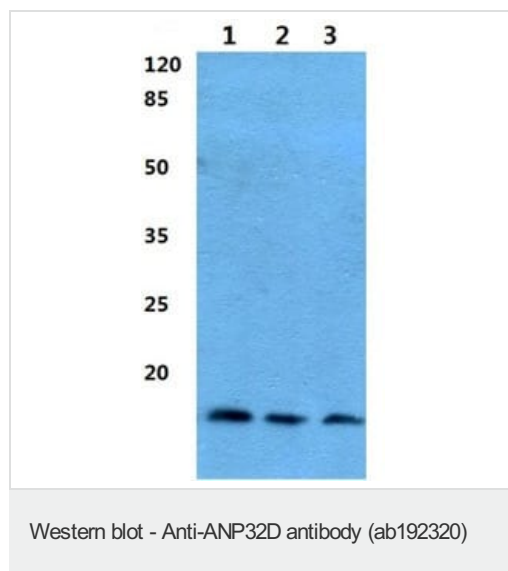
Application	Species
WB	 Human

Application	Abreviews	Notes
WB		Use at an assay dependent concentration. Predicted molecular weight: 15 kDa.

## Target

**Sequence similarities** Belongs to the ANP32 family.  
Contains 5 LRR (leucine-rich) repeats.

## Images



**All lanes** : Anti-ANP32D antibody (ab192320) at 1/500 dilution

**Lane 1** : Hela whole cell lysate

**Lane 2** : Mouse liver tissue lysate

**Lane 3** : Rat liver tissue lysate

**Predicted band size:** 15 kDa

**Please note:** All products are "FOR RESEARCH USE ONLY. NOT FOR USE IN DIAGNOSTIC PROCEDURES"

### **Our Abpromise to you: Quality guaranteed and expert technical support**

---

- Replacement or refund for products not performing as stated on the datasheet
- Valid for 12 months from date of delivery
- Response to your inquiry within 24 hours
  
- We provide support in Chinese, English, French, German, Japanese and Spanish
- Extensive multi-media technical resources to help you
- We investigate all quality concerns to ensure our products perform to the highest standards

If the product does not perform as described on this datasheet, we will offer a refund or replacement. For full details of the Abpromise, please visit <https://www.abcam.com/abpromise> or contact our technical team.

### **Terms and conditions**

---

- Guarantee only valid for products bought direct from Abcam or one of our authorized distributors