

Product datasheet

Anti-ANP32E antibody ab5993

5 References 3 Images

Overview

Product name	Anti-ANP32E antibody
Description	Rabbit polyclonal to ANP32E
Host species	Rabbit
Specificity	This antibody does not cross-react with PHAPI or PHAP12a.
Tested applications	Suitable for: WB, ICC, IHC-P
Species reactivity	Reacts with: Rat, Human
Immunogen	Synthetic peptide corresponding to Human ANP32E (C terminal). (Peptide available as ab6242)
Positive control	WB: A549, HepG2 and rat testis. IHC: Human small intestine tissue. ICC: Human small intestine cells.
General notes	<p>The Life Science industry has been in the grips of a reproducibility crisis for a number of years. Abcam is leading the way in addressing this with our range of recombinant monoclonal antibodies and knockout edited cell lines for gold-standard validation. Please check that this product meets your needs before purchasing.</p> <p>If you have any questions, special requirements or concerns, please send us an inquiry and/or contact our Support team ahead of purchase. Recommended alternatives for this product can be found below, along with publications, customer reviews and Q&As</p>

Properties

Form	Liquid
Storage instructions	Shipped at 4°C. Store at +4°C short term (1-2 weeks). Store at -20°C long term. Avoid freeze / thaw cycle.
Storage buffer	pH: 7.2 Preservative: 0.02% Sodium azide Constituent: PBS
Purity	Immunogen affinity purified
Clonality	Polyclonal
Isotype	IgG

Applications

The Abpromise guarantee

Our [Abpromise guarantee](#) covers the use of ab5993 in the following tested applications.

The application notes include recommended starting dilutions; optimal dilutions/concentrations should be determined by the end user.

Application	Abreviews	Notes
WB		Use a concentration of 0.5 - 2 µg/ml. Detects a band of approximately 35 kDa.
ICC		Use a concentration of 10 µg/ml.
IHC-P		Use a concentration of 2 µg/ml.

Target

Function

Inhibits activity of protein phosphatase 2A (PP2A). Does not inhibit protein phosphatase 1. May play a role in cerebellar development and synaptogenesis process by modulating PP2A activity.

Tissue specificity

Expressed in peripheral blood leukocytes, colon, small intestine, prostate, thymus, spleen, skeletal muscle, liver and kidney.

Sequence similarities

Belongs to the ANP32 family.
Contains 4 LRR (leucine-rich) repeats.
Contains 1 LRRCT domain.

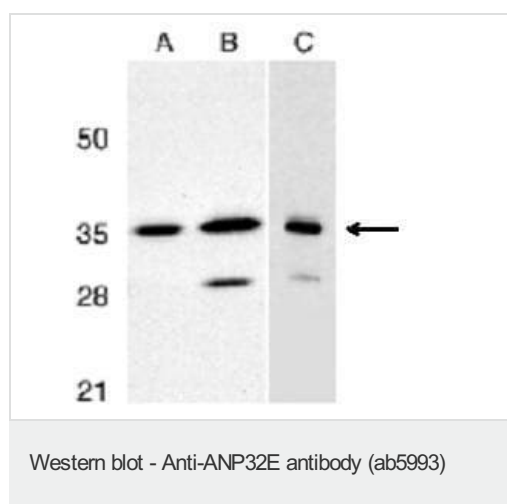
Post-translational modifications

Phosphorylated. The phosphorylation is nuclear localization signal (NLS)-dependent.

Cellular localization

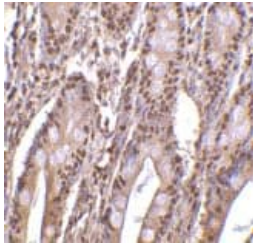
Cytoplasm. Nucleus.

Images



Western blot analysis of PHAP III expression in human A549 (A) and HepG2 (B) cells, and rat testis (C) with anti-PHAP III at 1 µg/ml.

Western blot analysis of ANP32E expression in human A549 (A) and HepG2 (B) cells, and rat testis (C) with ab5993 at 1 µg/ml.



ab5993 at 2µg/ml staining ANP32E in human small intestine tissue by IHC

Immunohistochemistry (Formalin/PFA-fixed paraffin-embedded sections) - Anti-ANP32E antibody (ab5993)

Immunocytochemistry - Anti-ANP32E antibody (ab5993)

Immunofluorescence of PHAP III in Human Small Intestine cells using ab5993 at 20 ug/ml.

Please note: All products are "FOR RESEARCH USE ONLY. NOT FOR USE IN DIAGNOSTIC PROCEDURES"

Our Abpromise to you: Quality guaranteed and expert technical support

- Replacement or refund for products not performing as stated on the datasheet
- Valid for 12 months from date of delivery
- Response to your inquiry within 24 hours
- We provide support in Chinese, English, French, German, Japanese and Spanish
- Extensive multi-media technical resources to help you
- We investigate all quality concerns to ensure our products perform to the highest standards

If the product does not perform as described on this datasheet, we will offer a refund or replacement. For full details of the Abpromise, please visit <https://www.abcam.com/abpromise> or contact our technical team.

Terms and conditions

- Guarantee only valid for products bought direct from Abcam or one of our authorized distributors