



Product datasheet

Anti-AP-Q antibody ab185345

★★★★☆ 1 Abreviews 1 References 1 Image

Overview

Product name	Anti-AP-Q antibody
Description	Rabbit polyclonal to AP-Q
Host species	Rabbit
Tested applications	Suitable for: IHC-P
Species reactivity	Reacts with: Human
Immunogen	<p>Recombinant fragment within Human AP-Q aa 818-905. The exact sequence is proprietary. Sequence:</p> <p>IPYPIKDVVLCYGIALGSDKEWDILLNTYTNTTNKEEKIQLAY AMSCSKD PWILNRYMEYAISTSPFTSNETNIIEVVASSEVGRYVA</p> <p>Database link: Q6Q4G3</p> <p style="text-align: right;">  Run BLAST with  Run BLAST with </p>
Positive control	Human placenta tissue.
General notes	<p>Previously labelled as Laeverin.</p> <p>Reproducibility is key to advancing scientific discovery and accelerating scientists' next breakthrough.</p> <p>Abcam is leading the way with our range of recombinant antibodies, knockout-validated antibodies and knockout cell lines, all of which support improved reproducibility.</p> <p>We are also planning to innovate the way in which we present recommended applications and species on our product datasheets, so that only applications & species that have been tested in our own labs, our suppliers or by selected trusted collaborators are covered by our Abpromise™ guarantee.</p> <p>In preparation for this, we have started to update the applications & species that this product is Abpromise guaranteed for.</p> <p>We are also updating the applications & species that this product has been “predicted to work with,” however this information is not covered by our Abpromise guarantee.</p> <p>Applications & species from publications and Abreviews that have not been tested in our own labs or in those of our suppliers are not covered by the Abpromise guarantee.</p> <p>Please check that this product meets your needs before purchasing. If you have any questions, special requirements or concerns, please send us an inquiry and/or contact our Support team</p>

ahead of purchase. Recommended alternatives for this product can be found below, as well as customer reviews and Q&As.

Properties

Form	Liquid
Storage instructions	Shipped at 4°C. Store at +4°C short term (1-2 weeks). Upon delivery aliquot. Store at -20°C long term. Avoid freeze / thaw cycle.
Storage buffer	pH: 7.20 Preservative: 0.02% Sodium azide Constituents: 40% Glycerol (glycerin, glycerine), 59% PBS
Purity	Immunogen affinity purified
Clonality	Polyclonal
Isotype	IgG

Applications

Our [Abpromise guarantee](#) covers the use of **ab185345** in the following tested applications.

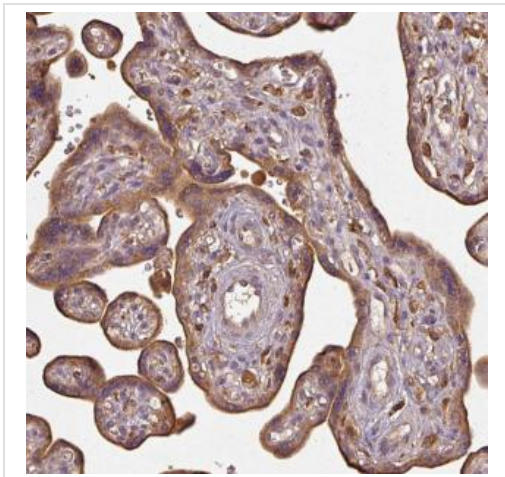
The application notes include recommended starting dilutions; optimal dilutions/concentrations should be determined by the end user.

Application	Abreviews	Notes
IHC-P		1/500 - 1/1000. Perform heat mediated antigen retrieval with citrate buffer pH 6 before commencing with IHC staining protocol.

Target

Function	Metalloprotease which may be important for placentation by regulating biological activity of key peptides at the embryo-maternal interface. On synthetic substrates it shows a marked preference for Leu-4-methylcoumaryl-7-amide (Leu-MCA) over Met-MCA, Arg-LCA and Lys-LCA. Cleaves the N-terminal amino acid of several peptides such as angiotensin-3, kisspeptin-10 and endokinin C.
Tissue specificity	Specifically expressed in placenta and not in other tissues. Mainly found at the cell surface region of the extravillous trophoblasts. Detected on extravillous trophoblasts in the outer layer of the chorion laeve in the fetal membrane Not detected on either fetal amnionic epithelial cells or maternal decidual cells. Also detected in the migrating extravillous trophoblasts in the maternal decidual tissues (at protein level).
Sequence similarities	Belongs to the peptidase M1 family.
Post-translational modifications	N-glycosylated.
Cellular localization	Membrane.

Images



Immunohistochemical analysis of Human placenta tissue labeling AP-Q with ab185345 at 1/500 dilution.

Immunohistochemistry (Formalin/PFA-fixed paraffin-embedded sections) - Anti-AP-Q antibody (ab185345)

Please note: All products are "FOR RESEARCH USE ONLY. NOT FOR USE IN DIAGNOSTIC PROCEDURES"

Our Abpromise to you: Quality guaranteed and expert technical support

- Replacement or refund for products not performing as stated on the datasheet
- Valid for 12 months from date of delivery
- Response to your inquiry within 24 hours

- We provide support in Chinese, English, French, German, Japanese and Spanish
- Extensive multi-media technical resources to help you
- We investigate all quality concerns to ensure our products perform to the highest standards

If the product does not perform as described on this datasheet, we will offer a refund or replacement. For full details of the Abpromise, please visit <https://www.abcam.com/abpromise> or contact our technical team.

Terms and conditions

- Guarantee only valid for products bought direct from Abcam or one of our authorized distributors