

Product datasheet

Anti-AP3 antibody ab3705

1 Image

Overview

Product name	Anti-AP3 antibody
Description	Goat polyclonal to AP3
Host species	Goat
Specificity	Recognises a strong band at 130kD representing AP3. Also detects a band at about 80kD probably representing non-specific binding.
Tested applications	Suitable for: WB
Species reactivity	Reacts with: Human
Immunogen	Synthetic peptide: SPSPQKRYQDTPGC , corresponding to amino acids 686-698 of Human AP3.

[Run BLAST with](#)

[Run BLAST with](#)

General notes

The Life Science industry has been in the grips of a reproducibility crisis for a number of years. Abcam is leading the way in addressing this with our range of recombinant monoclonal antibodies and knockout edited cell lines for gold-standard validation. Please check that this product meets your needs before purchasing.

If you have any questions, special requirements or concerns, please send us an inquiry and/or contact our Support team ahead of purchase. Recommended alternatives for this product can be found below, along with publications, customer reviews and Q&As

Properties

Form	Liquid
Storage instructions	Shipped at 4°C. Store at +4°C short term (1-2 weeks). Upon delivery aliquot. Store at -20°C or -80°C. Avoid freeze / thaw cycle.
Storage buffer	Preservative: 0.01% Sodium azide Constituents: 0.42% Potassium phosphate, 0.87% Sodium chloride
Purity	Immunogen affinity purified
Clonality	Polyclonal
Isotype	IgG

Applications

The Abpromise guarantee

Our [Abpromise guarantee](#) covers the use of ab3705 in the following tested applications.

The application notes include recommended starting dilutions; optimal dilutions/concentrations should be determined by the end user.

Application	Abreviews	Notes
WB		1/500. Detects a band of approximately 130 kDa (predicted molecular weight: 130 kDa).

Target

Function

Part of the AP-3 complex, an adaptor-related complex which is not clathrin-associated. The complex is associated with the Golgi region as well as more peripheral structures. It facilitates the budding of vesicles from the Golgi membrane and may be directly involved in trafficking to lysosomes.

Tissue specificity

Present in all adult tissues examined with the highest levels in skeletal muscle, heart, pancreas and testis.

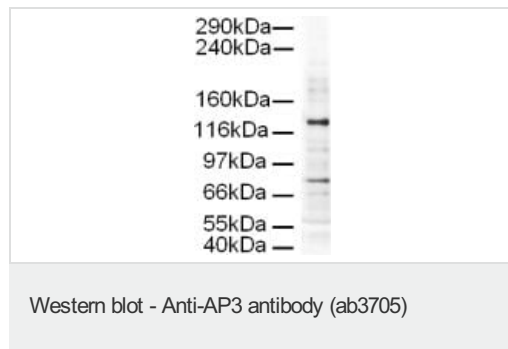
Sequence similarities

Belongs to the adaptor complexes large subunit family.
Contains 11 HEAT repeats.

Cellular localization

Cytoplasm. Golgi apparatus membrane.

Images



Western blot using ab3705 on HeLa whole cell extract at 1/500.

Secondary ab: Rabbit polyclonal to Goat IgG (HRP)

[ab6741](#) (1/5000)

Exposure time: 30 seconds.

Lysate at 20µg/lane.

Predicted molecular weight:130 kDa. The band at about 80kD probably represents non-specific binding.

Western blot using ab3705 on HeLa whole cell extract at 1/500.

Secondary ab: Rabbit polyclonal to Goat IgG (HRP) [ab6741](#)

(1/5000)

Exposure time: 30 seconds.

Lysate at 20µg/lane.

Predicted molecular weight:130 kDa. The band at about 80kD probably represents non-specific binding.

Our Abpromise to you: Quality guaranteed and expert technical support

- Replacement or refund for products not performing as stated on the datasheet
- Valid for 12 months from date of delivery
- Response to your inquiry within 24 hours

- We provide support in Chinese, English, French, German, Japanese and Spanish
- Extensive multi-media technical resources to help you
- We investigate all quality concerns to ensure our products perform to the highest standards

If the product does not perform as described on this datasheet, we will offer a refund or replacement. For full details of the Abpromise, please visit <https://www.abcam.com/abpromise> or contact our technical team.

Terms and conditions

- Guarantee only valid for products bought direct from Abcam or one of our authorized distributors