




Product datasheet

Anti-AP4B1 antibody ab235539

3 Images

Overview

<b>Product name</b>	Anti-AP4B1 antibody
<b>Description</b>	Rabbit polyclonal to AP4B1
<b>Host species</b>	Rabbit
<b>Tested applications</b>	<b>Suitable for:</b> WB, IHC-P
<b>Species reactivity</b>	<b>Reacts with:</b> Human <b>Predicted to work with:</b> Mouse 
<b>Immunogen</b>	<p>Recombinant fragment corresponding to Human AP4B1 aa 201-500. Sequence:</p> <p>                     HLLNRMSKLDQWGQAEVLNLLRYQPRSEELFDILNLL                      DSFLKSSSPG                      VVMGATKLFILAKMFPHVQTDVLRVKGPLLAACSSER                      ELCFVALCHV                      RQILHSLPGHFSSHYKFFCSYSEPHYKQKVEVLCELVN                      DENVQQVLE                      ELRGYCTDVSADFAQAAIFAIGGIARTYTDQCVQILTELLGL                      RQEHITTV                      VVQTFRDLVWLCPCQTEAVCQALPGCEENIQDSEGKQAL                      WLLGVHGERI                      PNAPYVLEDFVENVKSETFPAVKMELLTALLRFLSRPAE                      CQDMLGRLLY                 </p> <p>Database link: <a href="#">Q9Y6B7-1</a></p> <p style="text-align: right;">  <a href="#">Run BLAST with</a>                           <a href="#">Run BLAST with</a> </p>
<b>Positive control</b>	WB: HepG2, U-251 MG and L02 whole cell lysate. IHC-P: Human testis and adrenal gland tissue.
<b>General notes</b>	<p>Reproducibility is key to advancing scientific discovery and accelerating scientists' next breakthrough.</p> <p>Abcam is leading the way with our range of recombinant antibodies, knockout-validated antibodies and knockout cell lines, all of which support improved reproducibility.</p> <p>We are also planning to innovate the way in which we present recommended applications and species on our product datasheets, so that only applications &amp; species that have been tested in our own labs, our suppliers or by selected trusted collaborators are covered by our Abpromise™ guarantee.</p>

In preparation for this, we have started to update the applications & species that this product is Abpromise guaranteed for.

We are also updating the applications & species that this product has been “predicted to work with,” however this information is not covered by our Abpromise guarantee.

Applications & species from publications and Abreviews that have not been tested in our own labs or in those of our suppliers are not covered by the Abpromise guarantee.

Please check that this product meets your needs before purchasing. If you have any questions, special requirements or concerns, please send us an inquiry and/or contact our Support team ahead of purchase. Recommended alternatives for this product can be found below, as well as customer reviews and Q&As.

## Properties

---

<b>Form</b>	Liquid
<b>Storage instructions</b>	Shipped at 4°C. Store at +4°C short term (1-2 weeks). Upon delivery aliquot. Store at -20°C long term. Avoid freeze / thaw cycle.
<b>Storage buffer</b>	pH: 7.40 Constituents: 50% Glycerol (glycerin, glycerine), PBS, 0.03% Proclin 300
<b>Purity</b>	Protein G purified
<b>Purification notes</b>	Purity >95%.
<b>Clonality</b>	Polyclonal
<b>Isotype</b>	IgG

## Applications

---

Our [Abpromise guarantee](#) covers the use of **ab235539** in the following tested applications.

The application notes include recommended starting dilutions; optimal dilutions/concentrations should be determined by the end user.

Application	Abreviews	Notes
WB		1/500 - 1/2000.
IHC-P		1/20 - 1/200.

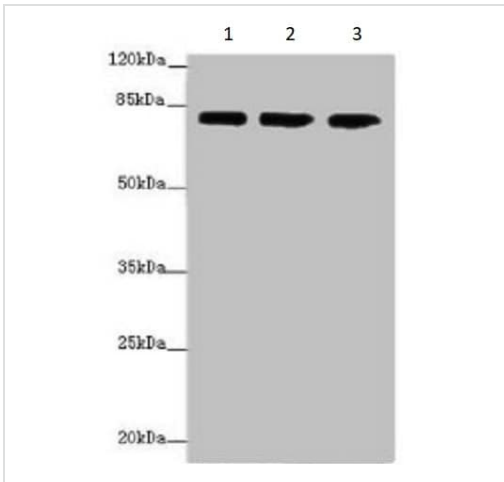
## Target

---

<b>Relevance</b>	Subunit of novel type of clathrin- or non-clathrin-associated protein coat involved in targeting proteins from the trans-Golgi network (TGN) to the endosomal-lysosomal system.
<b>Cellular localization</b>	Golgi apparatus, trans-Golgi network.

## Images

---



Western blot - Anti-AP4B1 antibody (ab235539)

**All lanes :** Anti-AP4B1 antibody (ab235539) at 1/500 dilution

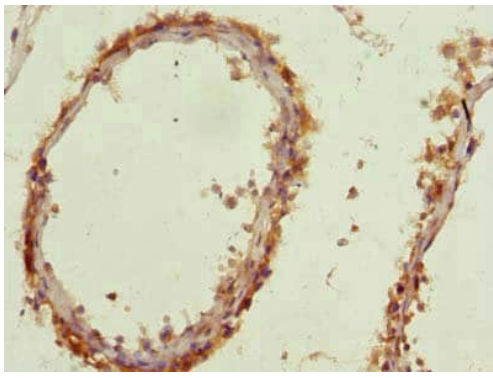
**Lane 1 :** HepG2 (Human liver hepatocellular carcinoma cell line) whole cell lysate

**Lane 2 :** U-251 MG (Human brain glioma cell line) whole cell lysate

**Lane 3 :** L02 (Human immortal liver cell line) whole cell lysate

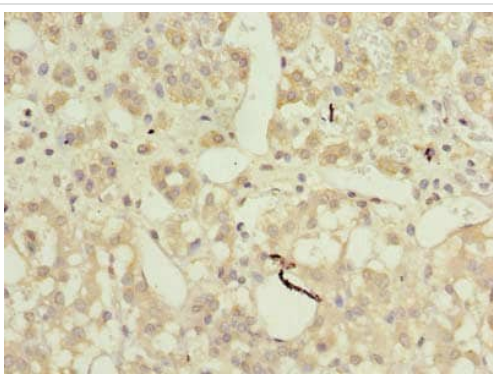
**Secondary**

**All lanes :** Goat polyclonal to Rabbit IgG at 1/10000 dilution



Immunohistochemistry (Formalin/PFA-fixed paraffin-embedded sections) - Anti-AP4B1 antibody (ab235539)

Paraffin-embedded human testis tissue stained for AP4B1 with ab235539 at 1/100 dilution in immunohistochemical analysis.



Immunohistochemistry (Formalin/PFA-fixed paraffin-embedded sections) - Anti-AP4B1 antibody (ab235539)

Paraffin-embedded human adrenal gland tissue stained for AP4B1 with ab235539 at 1/100 dilution in immunohistochemical analysis.

**Please note:** All products are "FOR RESEARCH USE ONLY. NOT FOR USE IN DIAGNOSTIC PROCEDURES"

## **Our Abpromise to you: Quality guaranteed and expert technical support**

---

- Replacement or refund for products not performing as stated on the datasheet
- Valid for 12 months from date of delivery
- Response to your inquiry within 24 hours
  
- We provide support in Chinese, English, French, German, Japanese and Spanish
- Extensive multi-media technical resources to help you
- We investigate all quality concerns to ensure our products perform to the highest standards

If the product does not perform as described on this datasheet, we will offer a refund or replacement. For full details of the Abpromise, please visit <https://www.abcam.com/abpromise> or contact our technical team.

## **Terms and conditions**

---

- Guarantee only valid for products bought direct from Abcam or one of our authorized distributors