

Product datasheet

APC Anti-CD10 antibody [CB-CALLA], prediluted ab155342

[1 Image](#)

Overview

Product name	APC Anti-CD10 antibody [CB-CALLA], prediluted
Description	APC Mouse monoclonal [CB-CALLA] to CD10, prediluted
Host species	Mouse
Conjugation	APC. Ex: 645nm, Em: 660nm
Tested applications	Suitable for: Flow Cyt
Species reactivity	Reacts with: Human
Immunogen	Tissue, cells or virus. This information is proprietary to Abcam and/or its suppliers.
Positive control	Normal Human peripheral blood cells.
General notes	<p>The Life Science industry has been in the grips of a reproducibility crisis for a number of years. Abcam is leading the way in addressing this with our range of recombinant monoclonal antibodies and knockout edited cell lines for gold-standard validation. Please check that this product meets your needs before purchasing.</p> <p>If you have any questions, special requirements or concerns, please send us an inquiry and/or contact our Support team ahead of purchase. Recommended alternatives for this product can be found below, along with publications, customer reviews and Q&As</p>

Properties

Form	Liquid
Storage instructions	Shipped at 4°C. Store at +4°C.
Storage buffer	pH: 7.20 Preservative: 0.09% Sodium azide Constituents: 99% PBS, 0.2% BSA
Purity	Protein G purified
Clonality	Monoclonal
Clone number	CB-CALLA
Isotype	IgG2b

Applications

The Abpromise guarantee

Our [Abpromise guarantee](#) covers the use of ab155342 in the following tested applications.

The application notes include recommended starting dilutions; optimal dilutions/concentrations should be determined by the end user.

Application	Abreviews	Notes
Flow Cyt		Use 5µl for 10 ⁶ cells. ab91534 - Mouse monoclonal IgG2b, is suitable for use as an isotype control with this antibody.

Target

Function

Thermolysin-like specificity, but is almost confined on acting on polypeptides of up to 30 amino acids. Biologically important in the destruction of opioid peptides such as Met- and Leu-enkephalins by cleavage of a Gly-Phe bond. Able to cleave angiotensin-1, angiotensin-2 and angiotensin 1-9. Involved in the degradation of atrial natriuretic factor (ANF). Displays UV-inducible elastase activity toward skin preelastic and elastic fibers.

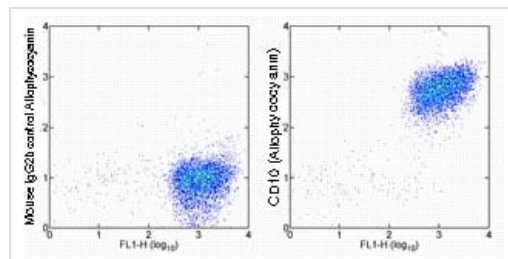
Sequence similarities

Belongs to the peptidase M13 family.

Cellular localization

Cell membrane.

Images



Flow Cytometry - APC Anti-CD10 antibody [CB-CALLA], prediluted (ab155342)

Flow cytometric analysis of normal Human peripheral blood cells with anti-Human CD15 FITC and either Mouse IgG2b kappa Isotype Control (left) or ab155342 (right). Cells in the granulocyte gate were used for analysis.

Please note: All products are "FOR RESEARCH USE ONLY. NOT FOR USE IN DIAGNOSTIC PROCEDURES"

Our Abpromise to you: Quality guaranteed and expert technical support

- Replacement or refund for products not performing as stated on the datasheet
- Valid for 12 months from date of delivery
- Response to your inquiry within 24 hours
- We provide support in Chinese, English, French, German, Japanese and Spanish
- Extensive multi-media technical resources to help you
- We investigate all quality concerns to ensure our products perform to the highest standards

If the product does not perform as described on this datasheet, we will offer a refund or replacement. For full details of the Abpromise, please visit <https://www.abcam.com/abpromise> or contact our technical team.

Terms and conditions

- Guarantee only valid for products bought direct from Abcam or one of our authorized distributors