

Product datasheet

APC Anti-Ly76 antibody [TER-119] ab93582

1 Image

Overview

<b>Product name</b>	APC Anti-Ly76 antibody [TER-119]
<b>Description</b>	APC Rat monoclonal [TER-119] to Ly76
<b>Host species</b>	Rat
<b>Conjugation</b>	APC. Ex: 645nm, Em: 660nm
<b>Tested applications</b>	<b>Suitable for:</b> Flow Cyt
<b>Species reactivity</b>	<b>Reacts with:</b> Mouse
<b>Immunogen</b>	Tissue/ cell preparation: Mouse fetal liver cells.
<b>Positive control</b>	Mouse erythroid cells from early proerythroblast to mature erythrocyte stages. Mouse splenocytes and bone marrow cell suspensions.
<b>General notes</b>	<p>The Life Science industry has been in the grips of a reproducibility crisis for a number of years. Abcam is leading the way in addressing this with our range of recombinant monoclonal antibodies and knockout edited cell lines for gold-standard validation. Please check that this product meets your needs before purchasing.</p> <p>If you have any questions, special requirements or concerns, please send us an inquiry and/or contact our Support team ahead of purchase. Recommended alternatives for this product can be found below, along with publications, customer reviews and Q&amp;As</p>

Properties

<b>Form</b>	Liquid
<b>Storage instructions</b>	Shipped at 4°C. Store at +4°C.
<b>Storage buffer</b>	pH: 7.20 Preservative: 0.09% Sodium azide Constituents: 0.87% Sodium chloride, 0.14% Monobasic dihydrogen sodium phosphate, 0.1% Gelatin
<b>Purity</b>	Affinity purified
<b>Clonality</b>	Monoclonal
<b>Clone number</b>	TER-119
<b>Isotype</b>	IgG2b
<b>Light chain type</b>	kappa

## Applications

### The Abpromise guarantee

Our [Abpromise guarantee](#) covers the use of ab93582 in the following tested applications.

The application notes include recommended starting dilutions; optimal dilutions/concentrations should be determined by the end user.

Application	Abreviews	Notes
Flow Cyt		Use at an assay dependent concentration.

## Target

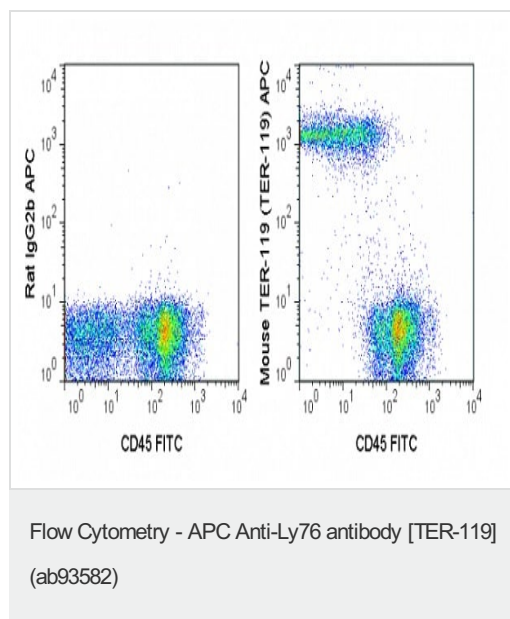
### Relevance

Ly76 is a glycoprotein A-associated protein. It is an erythroid-specific antigen expressed on early proerythroblasts to mature erythrocytes, but not BFU-E or CFU-E.

### Cellular localization

Plasma membrane

## Images



Flow cytometry of C57Bl/6 bone marrow cells labeling Ly76 with ab93582 at 0.5 ug (right panel) or Rat IgG2b isotype control at 0.5 ug (left panel).

**Please note:** All products are "FOR RESEARCH USE ONLY. NOT FOR USE IN DIAGNOSTIC PROCEDURES"

## Our Abpromise to you: Quality guaranteed and expert technical support

- Replacement or refund for products not performing as stated on the datasheet
- Valid for 12 months from date of delivery
- Response to your inquiry within 24 hours
- We provide support in Chinese, English, French, German, Japanese and Spanish
- Extensive multi-media technical resources to help you
- We investigate all quality concerns to ensure our products perform to the highest standards

If the product does not perform as described on this datasheet, we will offer a refund or replacement. For full details of the Abpromise, please visit <https://www.abcam.com/abpromise> or contact our technical team.

### **Terms and conditions**

---

- Guarantee only valid for products bought direct from Abcam or one of our authorized distributors