


Product datasheet

Anti-Apc1 (phospho S377) antibody ab12206

2 Images

Overview

Product name	Anti-Apc1 (phospho S377) antibody
Description	Rabbit polyclonal to Apc1 (phospho S377)
Host species	Rabbit
Specificity	ab12206 is specific for human APC1 phosphorylated at S377. Minimal reactivity is expected with the non-phosphorylated form of the protein.
Tested applications	Suitable for: ELISA, WB, ICC/IF, IHC-P
Species reactivity	Reacts with: Human Predicted to work with: Mouse, Rat, Cow, Dog 
Immunogen	Synthetic peptide: C-SHNQS _p PKRHS, corresponding to amino acids 373-382 of Human Apc1. Run BLAST with Run BLAST with

Properties

Form	Liquid
Storage instructions	Shipped at 4°C. Upon delivery aliquot and store at -20°C or -80°C. Avoid repeated freeze / thaw cycles.
Storage buffer	pH: 7.20 Preservative: 0.01% Sodium azide Constituents: 0.42% Potassium phosphate, 0.87% Sodium chloride
Purity	Immunogen affinity purified
Clonality	Polyclonal
Isotype	IgG

Applications

Our [Abpromise guarantee](#) covers the use of **ab12206** in the following tested applications.

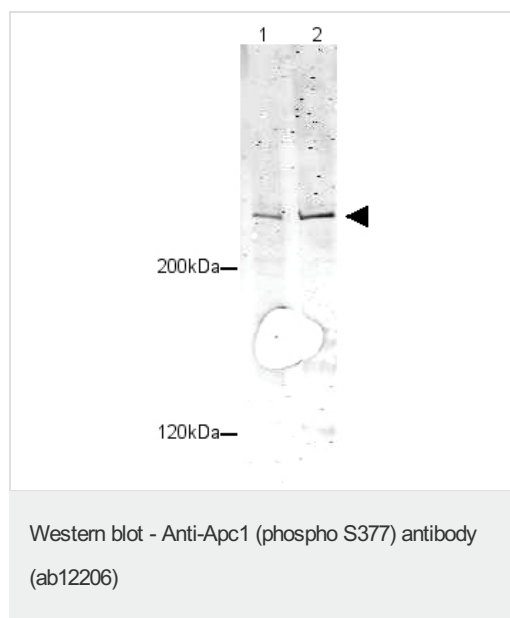
The application notes include recommended starting dilutions; optimal dilutions/concentrations should be determined by the end user.

Application	Abreviews	Notes
ELISA		1/2000 - 1/10000.
WB		1/200 - 1/1000. Detects a band of approximately 215 kDa (predicted molecular weight: 215 kDa).
ICC/IF		Use at an assay dependent concentration.
IHC-P		Use at an assay dependent concentration.

Target

Function	Component of the anaphase promoting complex/cyclosome (APC/C), a cell cycle-regulated E3 ubiquitin ligase that controls progression through mitosis and the G1 phase of the cell cycle. The APC/C complex acts by mediating ubiquitination and subsequent degradation of target proteins: it mainly mediates the formation of 'Lys-11'-linked polyubiquitin chains and, to a lower extent, the formation of 'Lys-48'- and 'Lys-63'-linked polyubiquitin chains.
Pathway	Protein modification; protein ubiquitination.
Sequence similarities	Belongs to the APC1 family. Contains 4 PC repeats.
Post-translational modifications	Phosphorylated. Phosphorylation on Ser-355 occurs specifically during mitosis.

Images



All lanes : Anti-Apc1 (phospho S377) antibody (ab12206) at 1/1000 dilution

Lane 1 : HeLa whole cell lysate from asynchronous cells

Lane 2 : HeLa whole cell lysate from cells treated with nocodazole

Lysates/proteins at 30 µg per lane.

Secondary

All lanes : Goat-anti-Rabbit IgG [H&L] MX at 1/10000 dilution

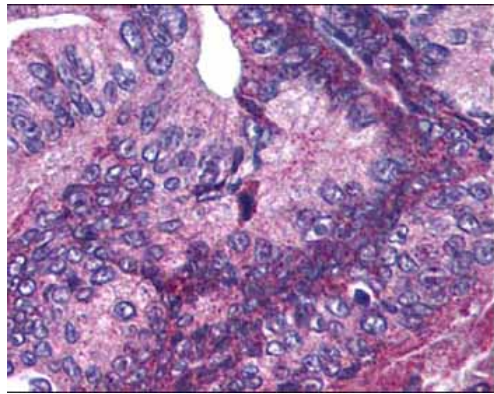
Performed under reducing conditions.

Predicted band size: 215 kDa

Observed band size: 215 kDa

The blot was probed with ab12206 overnight at 4°C

While some phosphorylated APC1 is present in untreated cells, the amount of phosphorylated protein is increased arrested in mitosis (by treatment with with nocodazole).



ab12206 at 5.0 µg/ml staining pancreatic carcinoma cells at 60X. This image shows moderate positive cytoplasmic and occasional nuclear staining. The image shows localization of the antibody as the precipitated red signal, with a hematoxylin purple nuclear counterstain.

Immunohistochemistry (Formalin/PFA-fixed paraffin-embedded sections) - Anti-Apc1 (phospho S377) antibody (ab12206)

Please note: All products are "FOR RESEARCH USE ONLY. NOT FOR USE IN DIAGNOSTIC PROCEDURES"

Our Abpromise to you: Quality guaranteed and expert technical support

- Replacement or refund for products not performing as stated on the datasheet
- Valid for 12 months from date of delivery
- Response to your inquiry within 24 hours
- We provide support in Chinese, English, French, German, Japanese and Spanish
- Extensive multi-media technical resources to help you
- We investigate all quality concerns to ensure our products perform to the highest standards

If the product does not perform as described on this datasheet, we will offer a refund or replacement. For full details of the Abpromise, please visit <https://www.abcam.com/abpromise> or contact our technical team.

Terms and conditions

- Guarantee only valid for products bought direct from Abcam or one of our authorized distributors