




## Product datasheet

# Anti-APLP2 antibody - C-terminal ab190925

1 Image

### Overview

<b>Product name</b>	Anti-APLP2 antibody - C-terminal
<b>Description</b>	Rabbit polyclonal to APLP2 - C-terminal
<b>Host species</b>	Rabbit
<b>Tested applications</b>	<b>Suitable for:</b> WB
<b>Species reactivity</b>	<b>Reacts with:</b> Rat, Human <b>Predicted to work with:</b> Mouse 
<b>Immunogen</b>	Synthetic peptide corresponding to Human APLP2 aa 639-656 (C terminal). Sequence: EEKVINSKNKVDENMVID  Database link: <a href="#">Q06481</a>  <div style="text-align: right;">  <a href="#">Run BLAST with</a>       <a href="#">Run BLAST with</a> </div>
<b>Positive control</b>	Rat brain and heart tissue lysates; SMMC cell lysate.
<b>General notes</b>	<p>Reproducibility is key to advancing scientific discovery and accelerating scientists' next breakthrough.</p> <p>Abcam is leading the way with our range of recombinant antibodies, knockout-validated antibodies and knockout cell lines, all of which support improved reproducibility.</p> <p>We are also planning to innovate the way in which we present recommended applications and species on our product datasheets, so that only applications &amp; species that have been tested in our own labs, our suppliers or by selected trusted collaborators are covered by our Abpromise™ guarantee.</p> <p>In preparation for this, we have started to update the applications &amp; species that this product is Abpromise guaranteed for.</p> <p>We are also updating the applications &amp; species that this product has been “predicted to work with,” however this information is not covered by our Abpromise guarantee.</p> <p>Applications &amp; species from publications and Abreviews that have not been tested in our own labs or in those of our suppliers are not covered by the Abpromise guarantee.</p> <p>Please check that this product meets your needs before purchasing. If you have any questions, special requirements or concerns, please send us an inquiry and/or contact our Support team ahead of purchase. Recommended alternatives for this product can be found below, as well as customer reviews and Q&amp;As.</p>

## Properties

---

<b>Form</b>	Liquid
<b>Storage instructions</b>	Shipped at 4°C. Store at +4°C short term (1-2 weeks). Upon delivery aliquot. Store at -20°C long term. Avoid freeze / thaw cycle.
<b>Storage buffer</b>	Preservatives: 0.025% Thimerosal (merthiolate), 0.025% Sodium azide Constituents: 2.5% BSA, 0.45% Sodium chloride, 0.1% Dibasic monohydrogen sodium phosphate
<b>Purity</b>	Immunogen affinity purified
<b>Clonality</b>	Polyclonal
<b>Isotype</b>	IgG

## Applications

---

Our [Abpromise guarantee](#) covers the use of **ab190925** in the following tested applications.

The application notes include recommended starting dilutions; optimal dilutions/concentrations should be determined by the end user.

Application	Abreviews	Notes
WB		Use a concentration of 0.1 - 0.5 µg/ml. Predicted molecular weight: 87 kDa. The detection limit for APLP2 is approximately 0.5ng/lane under reducing conditions.

---

## Target

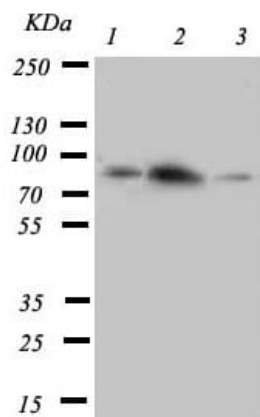
---

<b>Function</b>	May play a role in the regulation of hemostasis. The soluble form may have inhibitory properties towards coagulation factors. May interact with cellular G-protein signaling pathways. May bind to the DNA 5'-GTACATG-3'(CDEI box). Inhibits trypsin, chymotrypsin, plasmin, factor XIA and plasma and glandular kallikrein.
<b>Tissue specificity</b>	Expressed in placenta, brain, heart, lung, liver, kidney and endothelial tissues.
<b>Sequence similarities</b>	Belongs to the APP family. Contains 1 BPTI/Kunitz inhibitor domain.
<b>Post-translational modifications</b>	The BPTI/Kunitz inhibitor domain is O-glycosylated.
<b>Cellular localization</b>	Cell membrane. Nucleus.

---

## Images

---



**All lanes** : Anti-APLP2 antibody - C-terminal (ab190925) at 0.5 µg/ml

**Lane 1** : Rat brain tissue lysate

**Lane 2** : Rat heart tissue lysate

**Lane 3** : SMMC cell lysate

**Predicted band size:** 87 kDa

Western blot - Anti-APLP2 antibody - C-terminal (ab190925)

**Please note:** All products are "FOR RESEARCH USE ONLY. NOT FOR USE IN DIAGNOSTIC PROCEDURES"

### Our Abpromise to you: Quality guaranteed and expert technical support

- Replacement or refund for products not performing as stated on the datasheet
- Valid for 12 months from date of delivery
- Response to your inquiry within 24 hours
- We provide support in Chinese, English, French, German, Japanese and Spanish
- Extensive multi-media technical resources to help you
- We investigate all quality concerns to ensure our products perform to the highest standards

If the product does not perform as described on this datasheet, we will offer a refund or replacement. For full details of the Abpromise, please visit <https://www.abcam.com/abpromise> or contact our technical team.

### Terms and conditions

- Guarantee only valid for products bought direct from Abcam or one of our authorized distributors