




Product datasheet

Anti-Apolipoprotein CI/Apo-CI antibody ab231570

1 References 4 Images

Overview

Product name	Anti-Apolipoprotein CI/Apo-CI antibody
Description	Rabbit polyclonal to Apolipoprotein CI/Apo-CI
Host species	Rabbit
Tested applications	Suitable for: IHC-P, WB
Species reactivity	Reacts with: Mouse, Human Predicted to work with: Chimpanzee 
Immunogen	Recombinant fragment (His-tag) corresponding to Human Apolipoprotein CI/Apo-CI aa 31-83. (Expressed in E.coli). Sequence: SSALDKLKEFGNTLEDKARELISRIKQSELSAKMREWF SETFQKVKEKLIK IDS Database link: P02654  Run BLAST with  Run BLAST with
Positive control	WB: Recombinant human Apolipoprotein CI/Apo-CI protein; Human serum; Human placenta lysate; Mouse liver and heart lysates. IHC-P: Human liver and liver cancer tissues.
General notes	This product was previously labelled as Apolipoprotein CI

Properties

Form	Liquid
Storage instructions	Shipped at 4°C. Store at +4°C short term (1-2 weeks). Upon delivery aliquot. Store at -20°C long term. Avoid freeze / thaw cycle.
Storage buffer	pH: 7.40 Preservative: 0.02% Sodium azide Constituents: PBS, 50% Glycerol
Purity	Immunogen affinity purified
Purification notes	ab231570 was purified by antigen-specific affinity chromatography followed by Protein A affinity chromatography.
Clonality	Polyclonal

Isotype

IgG

Applications

Our [Abpromise guarantee](#) covers the use of **ab231570** in the following tested applications.

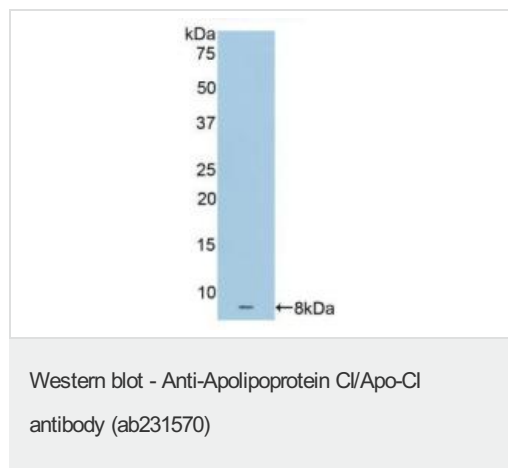
The application notes include recommended starting dilutions; optimal dilutions/concentrations should be determined by the end user.

Application	Abreviews	Notes
IHC-P		Use a concentration of 5 - 20 µg/ml.
WB		Use a concentration of 0.5 - 2 µg/ml. Predicted molecular weight: 9 kDa.

Target

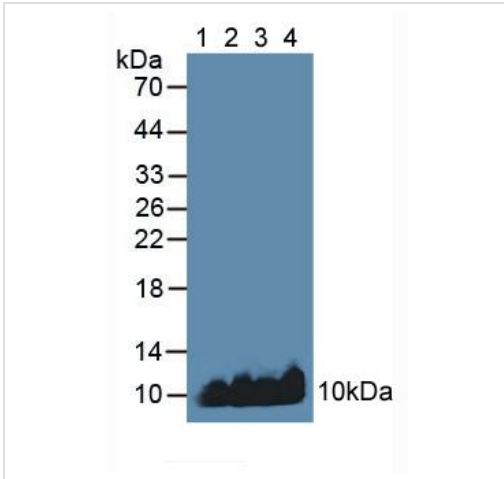
Function	Appears to modulate the interaction of APOE with beta-migrating VLDL and inhibit binding of beta-VLDL to the LDL receptor-related protein. Binds free fatty acids and reduces their intracellular esterification.
Tissue specificity	Synthesized mainly in liver and to a minor degree in intestine. Secreted in plasma.
Sequence similarities	Belongs to the apolipoprotein C1 family.
Cellular localization	Secreted.

Images



Anti-Apolipoprotein C1/Apo-C1 antibody (ab231570) at 2 µg/ml +
Recombinant human Apolipoprotein C1/Apo-C1 protein

Predicted band size: 9 kDa



Western blot - Anti-Apolipoprotein CII/Apo-CII antibody (ab231570)

All lanes : Anti-Apolipoprotein CII/Apo-CII antibody (ab231570) at 2 $\mu\text{g/ml}$

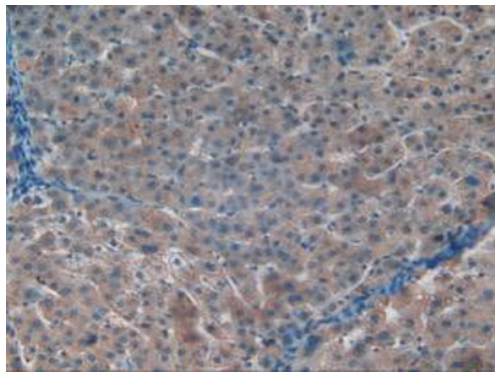
Lane 1 : Human serum

Lane 2 : Human placenta lysate

Lane 3 : Mouse liver lysate

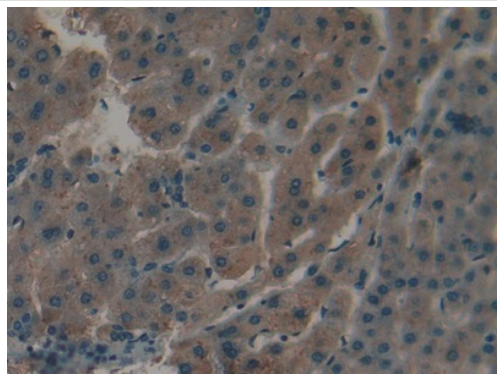
Lane 4 : Mouse heart lysate

Predicted band size: 9 kDa



Immunohistochemistry (Formalin/PFA-fixed paraffin-embedded sections) - Anti-Apolipoprotein CII/Apo-CII antibody (ab231570)

Paraffin-embedded human liver tissue stained for Apolipoprotein CII/Apo-CII using ab231570 at 20 $\mu\text{g/ml}$ in immunohistochemical analysis. DAB staining.



Paraffin-embedded human liver cancer tissue stained for Apolipoprotein C1/Apo-C1 using ab231570 at 20 µg/ml in immunohistochemical analysis. DAB staining.

Immunohistochemistry (Formalin/PFA-fixed paraffin-embedded sections) - Anti-Apolipoprotein C1/Apo-C1 antibody (ab231570)

Please note: All products are "FOR RESEARCH USE ONLY. NOT FOR USE IN DIAGNOSTIC PROCEDURES"

Our Abpromise to you: Quality guaranteed and expert technical support

- Replacement or refund for products not performing as stated on the datasheet
- Valid for 12 months from date of delivery
- Response to your inquiry within 24 hours
- We provide support in Chinese, English, French, German, Japanese and Spanish
- Extensive multi-media technical resources to help you
- We investigate all quality concerns to ensure our products perform to the highest standards

If the product does not perform as described on this datasheet, we will offer a refund or replacement. For full details of the Abpromise, please visit <https://www.abcam.com/abpromise> or contact our technical team.

Terms and conditions

- Guarantee only valid for products bought direct from Abcam or one of our authorized distributors