

## Product datasheet

# Anti-Apolipoprotein L1/APOL1 antibody [EPR2907(2)] ab108315

Recombinant RabMAb

★★★★★ 1 Abreviews 11 References 5 Images

### Overview

<b>Product name</b>	Anti-Apolipoprotein L1/APOL1 antibody [EPR2907(2)]
<b>Description</b>	Rabbit monoclonal [EPR2907(2)] to Apolipoprotein L1/APOL1
<b>Host species</b>	Rabbit
<b>Tested applications</b>	<b>Suitable for:</b> WB, IP, Flow Cyt, ICC/IF <b>Unsuitable for:</b> IHC-P
<b>Species reactivity</b>	<b>Reacts with:</b> Human
<b>Immunogen</b>	corresponding to Human Apolipoprotein L1/APOL1 aa 300-400. (Peptide available as <a href="#">ab194579</a> )
<b>Positive control</b>	Human plasma, ovary cancer, and HepG2 cell lysates. ICC/IF: BxPC-3 cells.
<b>General notes</b>	<p>Mouse, Rat: We have preliminary internal testing data to indicate this antibody may not react with these species. Please contact us for more information.</p> <p>This product was previously labelled as Apolipoprotein L 1</p> <p>This product is a recombinant monoclonal antibody, which offers several advantages including:</p> <ul style="list-style-type: none"><li>- High batch-to-batch consistency and reproducibility</li><li>- Improved sensitivity and specificity</li><li>- Long-term security of supply</li><li>- Animal-free production</li></ul> <p>For more information <a href="#">see here</a>.</p> <p>Our RabMAb<sup>®</sup> technology is a patented hybridoma-based technology for making rabbit monoclonal antibodies. For details on our patents, please refer to <a href="#">RabMAb<sup>®</sup> patents</a>.</p> <p>Reproducibility is key to advancing scientific discovery and accelerating scientists' next breakthrough.</p> <p>Abcam is leading the way with our range of recombinant antibodies, knockout-validated antibodies and knockout cell lines, all of which support improved reproducibility.</p> <p>We are also planning to innovate the way in which we present recommended applications and species on our product datasheets, so that only applications &amp; species that have been tested in</p>

our own labs, our suppliers or by selected trusted collaborators are covered by our Abpromise™ guarantee.

In preparation for this, we have started to update the applications & species that this product is Abpromise guaranteed for.

We are also updating the applications & species that this product has been “predicted to work with,” however this information is not covered by our Abpromise guarantee.

Applications & species from publications and Abreviews that have not been tested in our own labs or in those of our suppliers are not covered by the Abpromise guarantee.

Please check that this product meets your needs before purchasing. If you have any questions, special requirements or concerns, please send us an inquiry and/or contact our Support team ahead of purchase. Recommended alternatives for this product can be found below, as well as customer reviews and Q&As.

## Properties

<b>Form</b>	Liquid
<b>Storage instructions</b>	Shipped at 4°C. Store at -20°C. Stable for 12 months at -20°C.
<b>Storage buffer</b>	pH: 7.20 Preservative: 0.01% Sodium azide Constituents: 9% PBS, 40% Glycerol (glycerin, glycerine), 0.05% BSA, 50% Tissue culture supernatant
<b>Purity</b>	Protein A purified
<b>Clonality</b>	Monoclonal
<b>Clone number</b>	EPR2907(2)
<b>Isotype</b>	IgG

## Applications

Our [Abpromise guarantee](#) covers the use of **ab108315** in the following tested applications.

The application notes include recommended starting dilutions; optimal dilutions/concentrations should be determined by the end user.

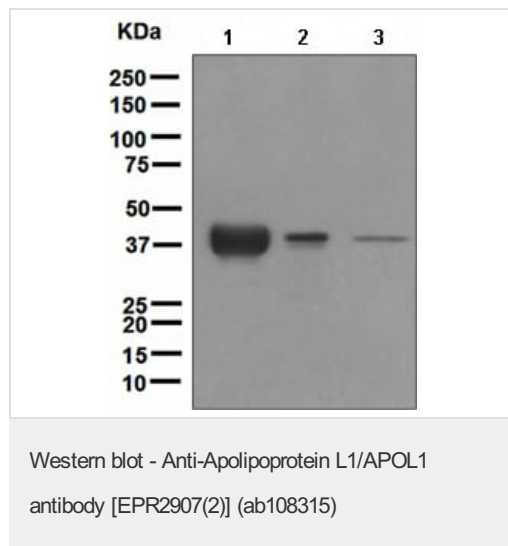
Application	Abreviews	Notes
WB	★★★★☆	1/1000 - 1/10000. Predicted molecular weight: 44 kDa.
IP		1/10 - 1/100.
Flow Cyt		1/10 - 1/100. <a href="#">ab172730</a> - Rabbit monoclonal IgG, is suitable for use as an isotype control with this antibody.
ICC/IF		1/50.

**Application notes** Is unsuitable for IHC-P.

## Target

<b>Function</b>	May play a role in lipid exchange and transport throughout the body. May participate in reverse cholesterol transport from peripheral cells to the liver.
<b>Tissue specificity</b>	Plasma. Found on APOA-I-containing high density lipoprotein (HDL3). Expressed in pancreas, lung, prostate, liver, placenta and spleen.
<b>Involvement in disease</b>	Defects in APOL1 are the cause of focal segmental glomerulosclerosis type 4 (FSGS4) [MIM:612551]. It is a renal pathology defined by the presence of segmental sclerosis in glomeruli and resulting in proteinuria, reduced glomerular filtration rate and edema. Renal insufficiency often progresses to end-stage renal disease, a highly morbid state requiring either dialysis therapy or kidney transplantation.
<b>Sequence similarities</b>	Belongs to the apolipoprotein L family.
<b>Post-translational modifications</b>	Phosphorylation sites are present in the extracellular medium.
<b>Cellular localization</b>	Secreted.

## Images



**All lanes :** Anti-Apolipoprotein L1/APOL1 antibody [EPR2907(2)] (ab108315) at 1/1000 dilution

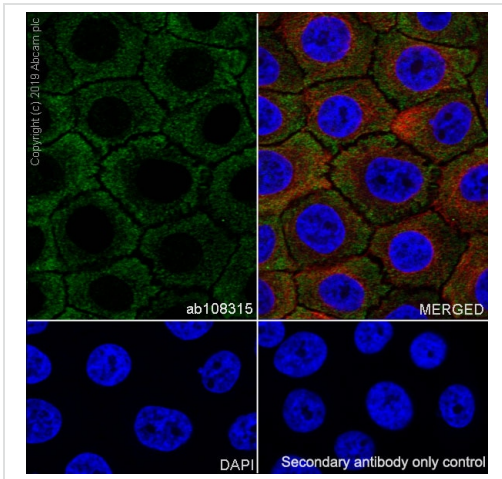
**Lane 1 :** Human plasma lysate

**Lane 2 :** Human ovary cancer lysate

**Lane 3 :** HepG2 cell lysate

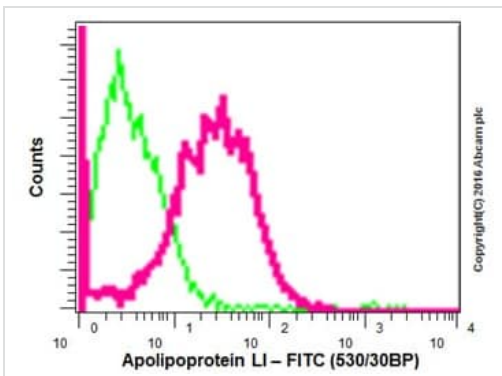
Lysates/proteins at 10 µg per lane.

**Predicted band size:** 44 kDa



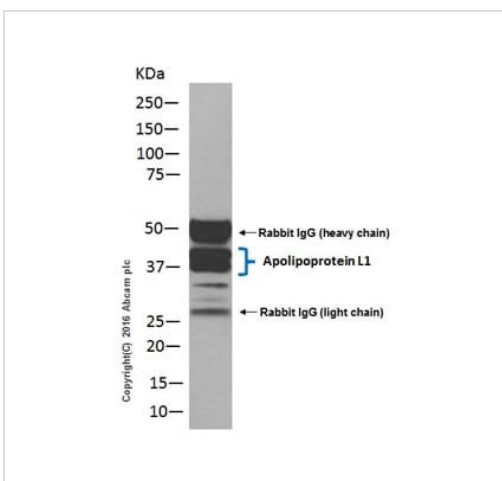
Immunocytochemistry/ Immunofluorescence - Anti-Apolipoprotein L1/APOL1 antibody [EPR2907(2)] (ab108315)

Immunocytochemistry/ Immunofluorescence analysis of BxPC-3 (human pancreas adenocarcinoma epithelial cell) cells labeling Apolipoprotein L1/APOL1 with purified ab108315 at 1/50 dilution (9.2 µg/mL). Cells were fixed in 4% Paraformaldehyde and permeabilized with 0.1% tritonX-100. Cells were counterstained with ab195889 Anti-alpha Tubulin antibody [DM1A] - Microtubule Marker (Alexa Fluor® 594) 1/200 (2.5 µg/mL). Goat anti rabbit IgG (Alexa Fluor® 488, ab150077) was used as the secondary antibody at 1/1000 (2 µg/mL) dilution. DAPI (blue) was used as nuclear counterstain. ab195889 Anti-alpha Tubulin antibody [DM1A] - Microtubule Marker (Alexa Fluor® 594) 1/200 (2.5 µg/mL) was used as the secondary antibody only control.



Flow Cytometry - Anti-Apolipoprotein L1/APOL1 antibody [EPR2907(2)] (ab108315)

Flow cytometric analysis of 2% paraformaldehyde-fixed HepG2(Human hepatocellular carcinoma) cell line labeling Apolipoprotein L 1/APOL1 with ab108315 at 1/70 dilution (red) compared with a Rabbit IgG, monoclonal [EPR25A] - Isotype Control (ab172730) (Green). Goat anti Rabbit IgG (FITC) at 1/150 dilution was used as the secondary antibody.



Immunoprecipitation - Anti-Apolipoprotein L1/APOL1 antibody [EPR2907(2)] (ab108315)

Apolipoprotein L 1/APOL1 was immunoprecipitated from 1mg of Human plasma with ab108315 at 1/40 dilution.

Western blot was performed from the immunoprecipitate using ab108315 at 1/1000 dilution.

Goat Anti-Rabbit IgG peroxidase conjugated, was used as secondary antibody at 1/1000 dilution.

Lane 1: Human plasma

Blocking and dilution buffer and concentration: 5% NFDN/TBST.

Exposure time: 10 seconds.

## Why choose a recombinant antibody?



**Research with confidence**  
Consistent and reproducible results



**Long-term and scalable supply**  
Recombinant technology



**Success from the first experiment**  
Confirmed specificity



**Ethical standards compliant**  
Animal-free production

Anti-Apolipoprotein L1/APOL1 antibody  
[EPR2907(2)] (ab108315)

**Please note:** All products are "FOR RESEARCH USE ONLY. NOT FOR USE IN DIAGNOSTIC PROCEDURES"

### Our Abpromise to you: Quality guaranteed and expert technical support

---

- Replacement or refund for products not performing as stated on the datasheet
- Valid for 12 months from date of delivery
- Response to your inquiry within 24 hours
- We provide support in Chinese, English, French, German, Japanese and Spanish
- Extensive multi-media technical resources to help you
- We investigate all quality concerns to ensure our products perform to the highest standards

If the product does not perform as described on this datasheet, we will offer a refund or replacement. For full details of the Abpromise, please visit <https://www.abcam.com/abpromise> or contact our technical team.

### Terms and conditions

---

- Guarantee only valid for products bought direct from Abcam or one of our authorized distributors