

Product datasheet

Anti-APPBP1 antibody - C-terminal ab71526

3 Images

Overview

<b>Product name</b>	Anti-APPBP1 antibody - C-terminal
<b>Description</b>	Rabbit polyclonal to APPBP1 - C-terminal
<b>Host species</b>	Rabbit
<b>Tested applications</b>	<b>Suitable for:</b> WB, ELISA, IHC-P
<b>Species reactivity</b>	<b>Reacts with:</b> Mouse, Human
<b>Immunogen</b>	Synthetic peptide from the C-terminal region of human APPBP1 conjugated to KLH.
<b>Positive control</b>	Human breast carcinoma tissue. Mouse brain tissue lysate. 293 cell lysate transiently transfected with the APPBP1 gene.

Properties

<b>Form</b>	Liquid
<b>Storage instructions</b>	Shipped at 4°C. Upon delivery aliquot and store at -20°C. Avoid freeze / thaw cycles.
<b>Storage buffer</b>	Preservative: 0.09% Sodium azide Constituent: PBS
<b>Purity</b>	Protein G purified
<b>Purification notes</b>	ab71526 is purified through a protein G column, eluted with high and low pH buffers and neutralized immediately, followed by dialysis against PBS.
<b>Clonality</b>	Polyclonal
<b>Isotype</b>	IgG

Applications

Our [Abpromise guarantee](#) covers the use of **ab71526** in the following tested applications.

The application notes include recommended starting dilutions; optimal dilutions/concentrations should be determined by the end user.

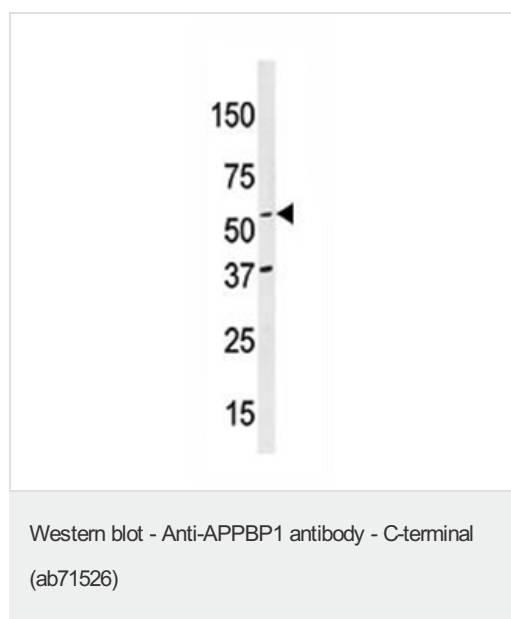
Application	Abreviews	Notes
WB		1/50 - 1/100. Detects a band of approximately 60 kDa (predicted molecular weight: 60 kDa).
ELISA		1/1000.

Application	Abreviews	Notes
IHC-P		1/50 - 1/100.

## Target

<b>Function</b>	Regulatory subunit of the dimeric UBA3-NAE1 E1 enzyme. E1 activates NEDD8 by first adenylating its C-terminal glycine residue with ATP, thereafter linking this residue to the side chain of the catalytic cysteine, yielding a NEDD8-UBA3 thioester and free AMP. E1 finally transfers NEDD8 to the catalytic cysteine of UBE2M. Necessary for cell cycle progression through the S-M checkpoint. Overexpression of NAE1 causes apoptosis through deregulation of NEDD8 conjugation.
<b>Tissue specificity</b>	Ubiquitous in fetal tissues. Expressed throughout the adult brain.
<b>Pathway</b>	Protein modification; protein neddylation.
<b>Sequence similarities</b>	Belongs to the ubiquitin-activating E1 family. ULA1 subfamily.
<b>Cellular localization</b>	Cell membrane. Colocalizes with APP in lipid rafts.

## Images

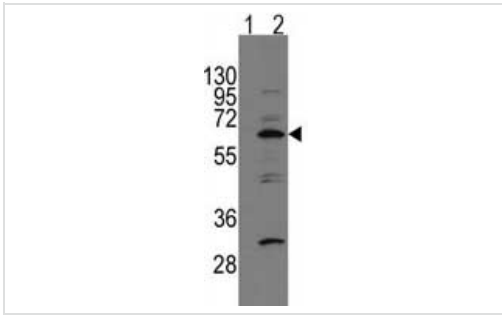


Anti-APPBP1 antibody - C-terminal (ab71526) at 1/60 dilution + mouse brain tissue lysate at 35 µg

**Predicted band size:** 60 kDa

**Observed band size:** 60 kDa

**Additional bands at:** 40 kDa. We are unsure as to the identity of these extra bands.



Western blot - Anti-APPBP1 antibody - C-terminal (ab71526)

**All lanes :** Anti-APPBP1 antibody - C-terminal (ab71526) at 1/50 dilution

**Lane 1 :** Nontransfected 293 cell lysate

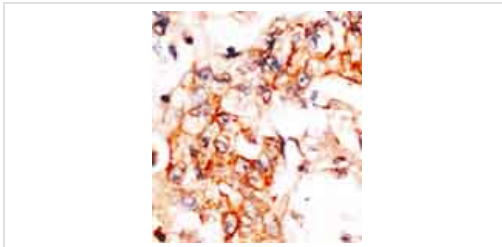
**Lane 2 :** 293 cell lysate transiently transfected with the APPBP1 gene

Lysates/proteins at 2 µg per lane.

**Predicted band size:** 60 kDa

**Observed band size:** 60 kDa

**Additional bands at:** 32 kDa. We are unsure as to the identity of these extra bands.



Immunohistochemistry (Formalin/PFA-fixed paraffin-embedded sections) - Anti-APPBP1 antibody - C-terminal (ab71526)

ab71526, at 1/50 dilution, staining APPBP1 in human breast carcinoma by immunohistochemistry using formalin-fixed, paraffin-embedded tissue, followed by a peroxidase-conjugated secondary antibody and DAB staining.

**Please note:** All products are "FOR RESEARCH USE ONLY AND ARE NOT INTENDED FOR DIAGNOSTIC OR THERAPEUTIC USE"

### Our Abpromise to you: Quality guaranteed and expert technical support

- Replacement or refund for products not performing as stated on the datasheet
- Valid for 12 months from date of delivery
- Response to your inquiry within 24 hours
- We provide support in Chinese, English, French, German, Japanese and Spanish
- Extensive multi-media technical resources to help you
- We investigate all quality concerns to ensure our products perform to the highest standards

If the product does not perform as described on this datasheet, we will offer a refund or replacement. For full details of the Abpromise, please visit <https://www.abcam.com/abpromise> or contact our technical team.

### Terms and conditions

- Guarantee only valid for products bought direct from Abcam or one of our authorized distributors