

Product datasheet

Anti-Arfaptin-1 antibody [EPR16360] ab191430

Recombinant **RabMAb**

[4 Images](#)

Overview

Product name	Anti-Arfaptin-1 antibody [EPR16360]
Description	Rabbit monoclonal [EPR16360] to Arfaptin-1
Host species	Rabbit
Tested applications	Suitable for: Flow Cyt, WB
Species reactivity	Reacts with: Mouse, Rat, Human
Immunogen	within Human Arfaptin-1 aa 300 to the C-terminus. The exact sequence is proprietary. Database link: P53367
Positive control	HeLa, HepG2, BxPC-3, Jurkat, Human fetal liver, Mouse brain, Rat brain and Raw264.7 lysates; Jurkat cells.

General notes

Our RabMAb[®] technology is a patented hybridoma-based technology for making rabbit monoclonal antibodies. For details on our patents, please refer to [RabMAb[®] patents](#).

This product is a [recombinant rabbit monoclonal antibody](#).

Properties

Form	Liquid
Storage instructions	Shipped at 4°C. Store at +4°C short term (1-2 weeks). Upon delivery aliquot. Store at -20°C long term. Avoid freeze / thaw cycle.
Storage buffer	Preservative: 0.01% Sodium azide Constituents: 59% PBS, 40% Glycerol, 0.05% BSA
Purity	Protein A purified
Clonality	Monoclonal
Clone number	EPR16360
Isotype	IgG

Applications

Our [Abpromise guarantee](#) covers the use of **ab191430** in the following tested applications.

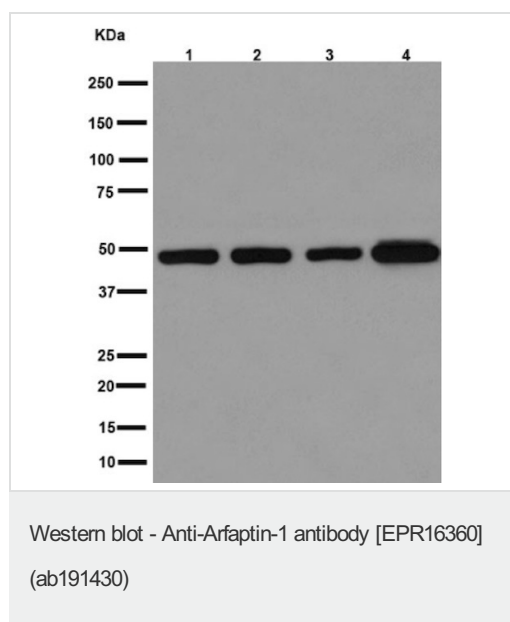
The application notes include recommended starting dilutions; optimal dilutions/concentrations should be determined by the end user.

Application	Abreviews	Notes
Flow Cyt		1/120. ab172730 - Rabbit monoclonal IgG, is suitable for use as an isotype control with this antibody.
WB		1/1000 - 1/10000. Detects a band of approximately 44 kDa (predicted molecular weight: 42 kDa).

Target

Function	Putative target protein of ADP-ribosylation factor.
Tissue specificity	Ubiquitously expressed. Higher levels in liver, pancreas, placenta, skeletal muscle and heart.
Sequence similarities	Contains 1 AH domain.

Images



All lanes : Anti-Arfaptin-1 antibody [EPR16360] (ab191430) at 1/10000 dilution

- Lane 1** : HeLa lysate
- Lane 2** : HepG2 lysate
- Lane 3** : BxPC-3 lysate
- Lane 4** : Jurkat lysate

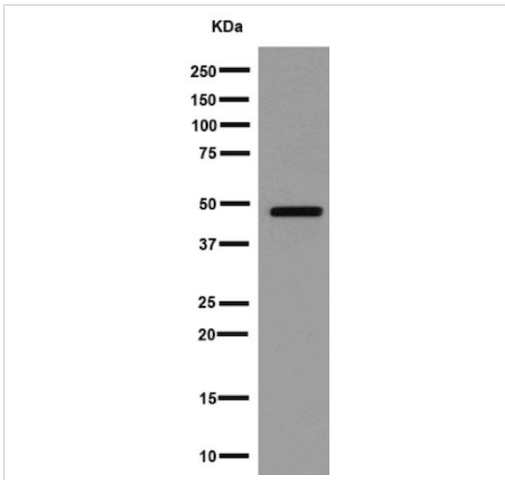
Lysates/proteins at 20 µg per lane.

Secondary

All lanes : Goat Anti-Rabbit IgG, (H+L), Peroxidase conjugated at 1/1000 dilution

Predicted band size: 42 kDa

Additional bands at: 44 kDa. We are unsure as to the identity of these extra bands.



Western blot - Anti-Arfaptin-1 antibody [EPR16360] (ab191430)

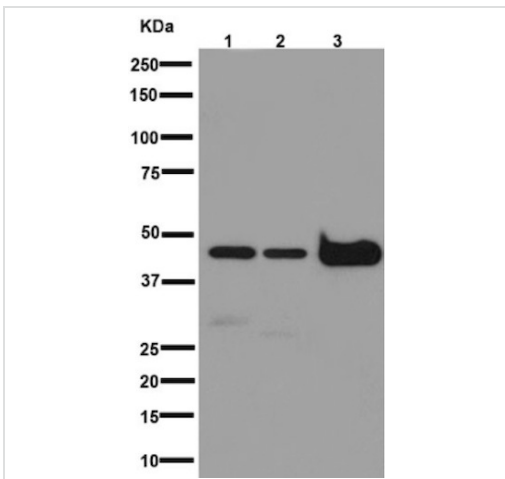
Anti-Arfaptin-1 antibody [EPR16360] (ab191430) at 1/10000 dilution + Human fetal liver lysate at 10 µg

Secondary

Anti-Rabbit IgG (HRP), specific to the non-reduced form of IgG at 1/1000 dilution

Predicted band size: 42 kDa

Additional bands at: 44 kDa. We are unsure as to the identity of these extra bands.



Western blot - Anti-Arfaptin-1 antibody [EPR16360] (ab191430)

All lanes : Anti-Arfaptin-1 antibody [EPR16360] (ab191430) at 1/1000 dilution

Lane 1 : Mouse brain lysate

Lane 2 : Rat brain lysate

Lane 3 : Raw264.7 lysate

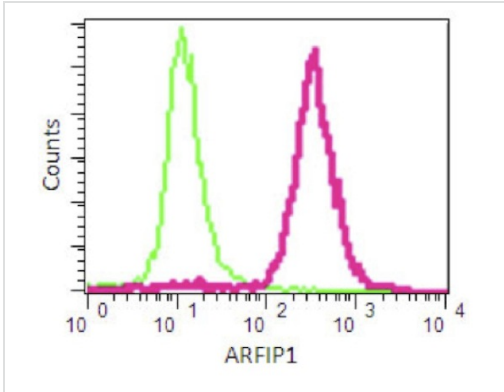
Lysates/proteins at 10 µg per lane.

Secondary

All lanes : Goat Anti-Rabbit IgG, (H+L), Peroxidase conjugated at 1/1000 dilution

Predicted band size: 42 kDa

Additional bands at: 44 kDa. We are unsure as to the identity of these extra bands.



Flow Cytometry - Anti-Arfaptin-1 antibody
[EPR16360] (ab191430)

Flow Cytometrical analysis of Jurkat cells labeling Arfaptin-1 with ab191430 at 1/120 compared to a Isotype control. FITC-conjugated goat-anti-rabbit secondary antibody at 1/150 were used for the analysis.

Please note: All products are "FOR RESEARCH USE ONLY. NOT FOR USE IN DIAGNOSTIC PROCEDURES"

Our Abpromise to you: Quality guaranteed and expert technical support

- Replacement or refund for products not performing as stated on the datasheet
- Valid for 12 months from date of delivery
- Response to your inquiry within 24 hours
- We provide support in Chinese, English, French, German, Japanese and Spanish
- Extensive multi-media technical resources to help you
- We investigate all quality concerns to ensure our products perform to the highest standards

If the product does not perform as described on this datasheet, we will offer a refund or replacement. For full details of the Abpromise, please visit <https://www.abcam.com/abpromise> or contact our technical team.

Terms and conditions

- Guarantee only valid for products bought direct from Abcam or one of our authorized distributors