

Product datasheet

Anti-ARHGEF10 antibody ab168936

2 Images

Overview

Product name	Anti-ARHGEF10 antibody
Description	Mouse polyclonal to ARHGEF10
Host species	Mouse
Tested applications	Suitable for: WB, ICC/IF
Species reactivity	Reacts with: Human
Immunogen	Recombinant fragment corresponding to amino acids 207-570 of Human ARHGEF10 Isoform 3 (AAH40474.1) Run BLAST with ExPASy Run BLAST with NCBI
Positive control	ARHGEF10-transfected 293T cell lysate. HeLa cells.

Properties

Form	Liquid
Storage instructions	Shipped at 4°C. Store at +4°C short term (1-2 weeks). Upon delivery aliquot. Store at -20°C long term.
Storage buffer	pH: 7.20 Constituent: 99% PBS
Purity	Protein A purified
Clonality	Polyclonal
Isotype	IgG

Applications

Our [Abpromise guarantee](#) covers the use of **ab168936** in the following tested applications.

The application notes include recommended starting dilutions; optimal dilutions/concentrations should be determined by the end user.

Application	Abreviews	Notes
WB		Use a concentration of 1 µg/ml. Predicted molecular weight: 152 kDa.
ICC/IF		Use a concentration of 10 µg/ml.

Target

Function

May play a role in developmental myelination of peripheral nerves.

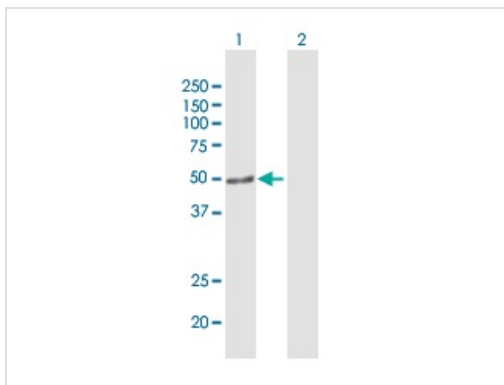
Involvement in disease

Defects in ARHGEF10 are the cause of slowed nerve conduction velocity (SNCV) [MIM:608236]. Affected individuals present a reduction in nerve conduction velocities without any clinical signs of peripheral or central nervous system dysfunction. SNCV inheritance is autosomal dominant.

Sequence similarities

Contains 1 DH (DBL-homology) domain.

Images



Western blot - Anti-ARHGEF10 antibody (ab168936)

All lanes : Anti-ARHGEF10 antibody (ab168936) at 1 $\mu\text{g/ml}$

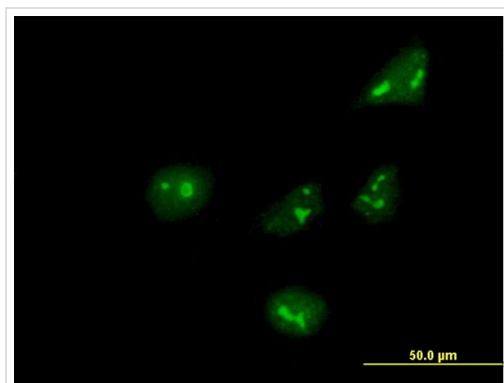
Lane 1 : ARHGEF10-transfected 293T cell lysate (41.8 kDa)

Lane 2 : non-transfected 293T cell lysate

Lysates/proteins at 15 μl per lane.

Developed using the ECL technique.

Predicted band size: 152 kDa



Immunocytochemistry/ Immunofluorescence - Anti-ARHGEF10 antibody (ab168936)

Immunofluorescent analysis of HeLa cells, labeling ARHGEF10 with ab168936 at 10 $\mu\text{g/ml}$.

Please note: All products are "FOR RESEARCH USE ONLY AND ARE NOT INTENDED FOR DIAGNOSTIC OR THERAPEUTIC USE"

Our Abpromise to you: Quality guaranteed and expert technical support

- Replacement or refund for products not performing as stated on the datasheet
- Valid for 12 months from date of delivery
- Response to your inquiry within 24 hours

- We provide support in Chinese, English, French, German, Japanese and Spanish
- Extensive multi-media technical resources to help you
- We investigate all quality concerns to ensure our products perform to the highest standards

If the product does not perform as described on this datasheet, we will offer a refund or replacement. For full details of the Abpromise, please visit <https://www.abcam.com/abpromise> or contact our technical team.

Terms and conditions

- Guarantee only valid for products bought direct from Abcam or one of our authorized distributors