




Product datasheet

Anti-ARHGEF14 antibody ab230266

2 Images

Overview

Product name	Anti-ARHGEF14 antibody
Description	Rabbit polyclonal to ARHGEF14
Host species	Rabbit
Tested applications	Suitable for: IHC-P
Species reactivity	<p>Reacts with: Human</p> <p>Predicted to work with: Mouse, Rat </p>
Immunogen	<p>Recombinant fragment corresponding to Human ARHGEF14 aa 850-980. Sequence:</p> <p>KELARFKPMQRHLFLHEKAVLFCKKREENGEGYEKAPSY SYKQSLNMAAV GITENVKGDAKKFEIWYNAREEVYVQAPTPEIKAAWVNEIR KVLTSQLQ ACREASQHRALEQSQSLPLPAPTSTSPSRGN</p> <p>Database link: O15068</p> <p style="text-align: right;"> Run BLAST with  Run BLAST with</p>
Positive control	IHC-P: Human tonsil and spleen tissue.
General notes	<p>Reproducibility is key to advancing scientific discovery and accelerating scientists' next breakthrough.</p> <p>Abcam is leading the way with our range of recombinant antibodies, knockout-validated antibodies and knockout cell lines, all of which support improved reproducibility.</p> <p>We are also planning to innovate the way in which we present recommended applications and species on our product datasheets, so that only applications & species that have been tested in our own labs, our suppliers or by selected trusted collaborators are covered by our Abpromise™ guarantee.</p> <p>In preparation for this, we have started to update the applications & species that this product is Abpromise guaranteed for.</p> <p>We are also updating the applications & species that this product has been “predicted to work with,” however this information is not covered by our Abpromise guarantee.</p> <p>Applications & species from publications and Abreviews that have not been tested in our own labs or in those of our suppliers are not covered by the Abpromise guarantee.</p> <p>Please check that this product meets your needs before purchasing. If you have any questions, special requirements or concerns, please send us an inquiry and/or contact our Support team</p>

ahead of purchase. Recommended alternatives for this product can be found below, as well as customer reviews and Q&As.

Properties

Form	Liquid
Storage instructions	Shipped at 4°C. Store at +4°C short term (1-2 weeks). Upon delivery aliquot. Store at -20°C long term. Avoid freeze / thaw cycle.
Storage buffer	pH: 7.30 Preservative: 0.02% Sodium azide Constituents: PBS, 50% Glycerol (glycerin, glycerine)
Purity	Immunogen affinity purified
Clonality	Polyclonal
Isotype	IgG

Applications

Our [Abpromise guarantee](#) covers the use of **ab230266** in the following tested applications.

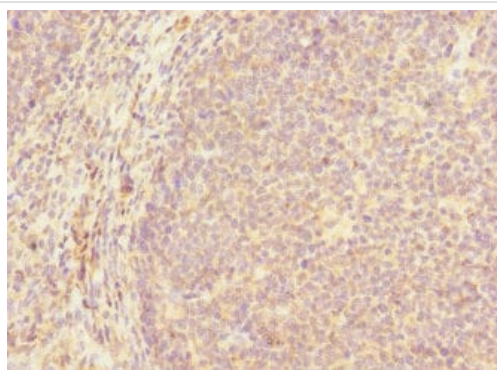
The application notes include recommended starting dilutions; optimal dilutions/concentrations should be determined by the end user.

Application	Abreviews	Notes
IHC-P		1/20 - 1/200.

Target

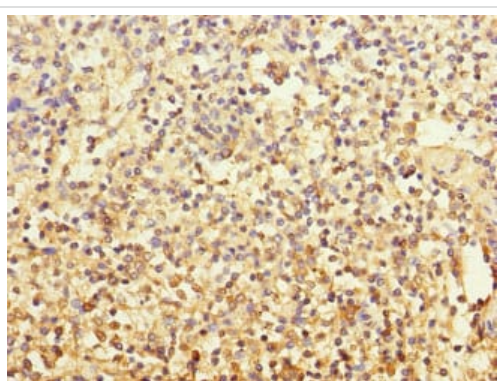
Function	Guanine nucleotide exchange factor that potentially links pathways that signal through RAC1, RHOA and CDC42. Catalyzes guanine nucleotide exchange on RHOA and CDC42 and interacts specifically with the GTP-bound form of RAC1, suggesting that it functions as an effector of RAC1. May also participate in axonal transport in the brain. Becomes activated and highly tumorigenic by truncation of the N-terminus (By similarity). Isoform 5 activates CDC42.
Sequence similarities	Belongs to the MCF2 family. Contains 1 CRAL-TRIO domain. Contains 1 DH (DBL-homology) domain. Contains 1 PH domain. Contains 1 SH3 domain. Contains 1 spectrin repeat.
Domain	The CRAL-TRIO domain is involved in interaction with inositol phospholipids. The DH domain is involved in interaction with CCPG1.
Cellular localization	Cytoplasm. Cell membrane.

Images



Paraffin-embedded human tonsil tissue stained for ARHGEF14 using ab230266 at 1/100 dilution in immunohistochemical analysis.

Immunohistochemistry (Formalin/PFA-fixed paraffin-embedded sections) - Anti-ARHGEF14 antibody (ab230266)



Paraffin-embedded human spleen tissue stained for ARHGEF14 using ab230266 at 1/100 dilution in immunohistochemical analysis.

Immunohistochemistry (Formalin/PFA-fixed paraffin-embedded sections) - Anti-ARHGEF14 antibody (ab230266)

Please note: All products are "FOR RESEARCH USE ONLY. NOT FOR USE IN DIAGNOSTIC PROCEDURES"

Our Abpromise to you: Quality guaranteed and expert technical support

- Replacement or refund for products not performing as stated on the datasheet
- Valid for 12 months from date of delivery
- Response to your inquiry within 24 hours
- We provide support in Chinese, English, French, German, Japanese and Spanish
- Extensive multi-media technical resources to help you
- We investigate all quality concerns to ensure our products perform to the highest standards

If the product does not perform as described on this datasheet, we will offer a refund or replacement. For full details of the Abpromise, please visit <https://www.abcam.com/abpromise> or contact our technical team.

Terms and conditions

- Guarantee only valid for products bought direct from Abcam or one of our authorized distributors