

Product datasheet

Anti-ARL 1 antibody [EPR10595] - BSA and Azide free  
ab249227

Recombinant RabMAb

10 Images

Overview

<b>Product name</b>	Anti-ARL 1 antibody [EPR10595] - BSA and Azide free
<b>Description</b>	Rabbit monoclonal [EPR10595] to ARL 1 - BSA and Azide free
<b>Host species</b>	Rabbit
<b>Tested applications</b>	<b>Suitable for:</b> ICC/IF, IHC-P, WB <b>Unsuitable for:</b> Flow Cyt
<b>Species reactivity</b>	<b>Reacts with:</b> Mouse, Rat, Human
<b>Immunogen</b>	Synthetic peptide within Human ARL 1. The exact sequence is proprietary. Database link: <a href="#">P40616</a>
<b>General notes</b>	Ab249227 is the carrier-free version of <a href="#">ab155982</a> . This format is designed for use in antibody labeling, including fluorochromes, metal isotopes, oligonucleotides, enzymes.

Our [carrier-free formats](#) are supplied in a buffer free of BSA, sodium azide and glycerol for higher conjugation efficiency.

Use our [conjugation kits](#) for antibody conjugates that are ready-to-use in as little as 20 minutes with <1 minute hands-on-time and 100% antibody recovery: available for fluorescent dyes, HRP, biotin and gold.

ab249227 is compatible with the Maxpar® Antibody Labeling Kit from Fluidigm.

*Maxpar® is a trademark of Fluidigm Canada Inc.*

This product is a recombinant monoclonal antibody, which offers several advantages including:

- High batch-to-batch consistency and reproducibility
- Improved sensitivity and specificity
- Long-term security of supply
- Animal-free production

For more information [see here](#).

Our RabMAb® technology is a patented hybridoma-based technology for making rabbit monoclonal antibodies. For details on our patents, please refer to [RabMAb® patents](#).

Reproducibility is key to advancing scientific discovery and accelerating scientists' next breakthrough.

Abcam is leading the way with our range of recombinant antibodies, knockout-validated antibodies and knockout cell lines, all of which support improved reproducibility.

We are also planning to innovate the way in which we present recommended applications and species on our product datasheets, so that only applications & species that have been tested in our own labs, our suppliers or by selected trusted collaborators are covered by our Abpromise™ guarantee.

In preparation for this, we have started to update the applications & species that this product is Abpromise guaranteed for.

We are also updating the applications & species that this product has been “predicted to work with,” however this information is not covered by our Abpromise guarantee.

Applications & species from publications and Abreviews that have not been tested in our own labs or in those of our suppliers are not covered by the Abpromise guarantee.

Please check that this product meets your needs before purchasing. If you have any questions, special requirements or concerns, please send us an inquiry and/or contact our Support team ahead of purchase. Recommended alternatives for this product can be found below, as well as customer reviews and Q&As.

## Properties

---

<b>Form</b>	Liquid
<b>Storage instructions</b>	Shipped at 4°C. Store at +4°C. Do Not Freeze.
<b>Storage buffer</b>	pH: 7.2 Constituent: PBS
<b>Carrier free</b>	Yes
<b>Purity</b>	Affinity purified
<b>Clonality</b>	Monoclonal
<b>Clone number</b>	EPR10595
<b>Isotype</b>	IgG

## Applications

---

Our [Abpromise guarantee](#) covers the use of **ab249227** in the following tested applications.

The application notes include recommended starting dilutions; optimal dilutions/concentrations should be determined by the end user.

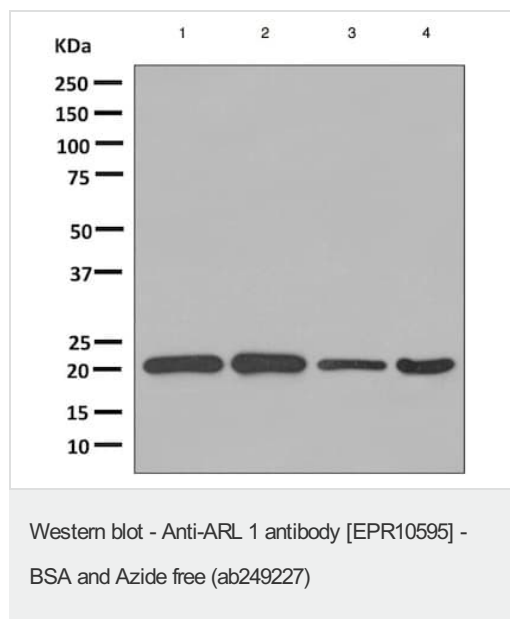
Application	Abreviews	Notes
ICC/IF		Use at an assay dependent concentration.
IHC-P		Use at an assay dependent concentration. Perform heat mediated antigen retrieval before commencing with IHC staining protocol.
WB		Use at an assay dependent concentration. Predicted molecular weight: 20 kDa.

**Application notes**                      Is unsuitable for Flow Cyt.

## Target

<b>Function</b>	GTP-binding protein that has very low efficiency as allosteric activator of the cholera toxin catalytic subunit, an ADP-ribosyltransferase. Can activate phospholipase D with very low efficiency. Important for normal function of the Golgi apparatus.
<b>Tissue specificity</b>	Detected in heart, liver, lung and liver (at protein level). Detected in fetal heart, lung, liver and kidney. Detected in adult heart, placenta, lung, liver, skeletal muscle, kidney and pancreas.
<b>Sequence similarities</b>	Belongs to the small GTPase superfamily. Arf family.
<b>Cellular localization</b>	Golgi apparatus membrane.

## Images



**All lanes** : Anti-ARL 1 antibody [EPR10595] ([ab155982](#)) at 1/1000 dilution

**Lane 1** : HepG2 cell lysate

**Lane 2** : MCF7 cell lysate

**Lane 3** : HeLa cell lysate

**Lane 4** : K562 cell lysate

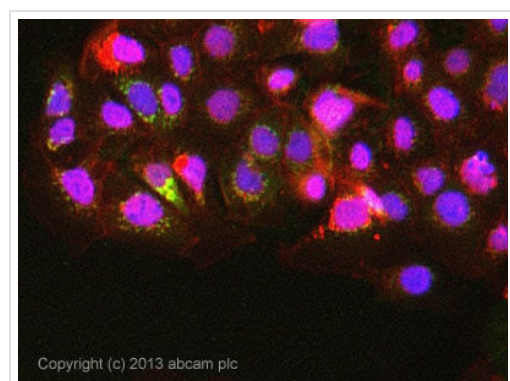
Lysates/proteins at 10 µg per lane.

### Secondary

**All lanes** : HRP labeled goat anti-rabbit IgG at 1/2000 dilution

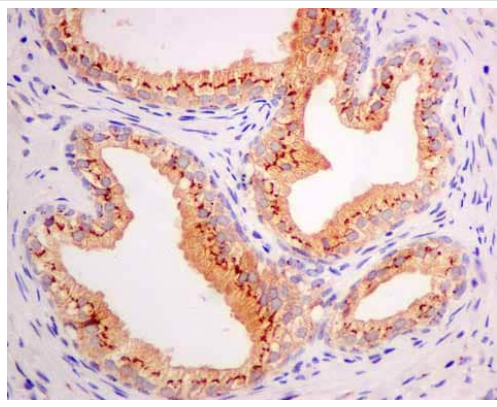
**Predicted band size:** 20 kDa

This data was developed using [ab155982](#), the same antibody clone in a different buffer formulation.



This data was developed using [ab155982](#), the same antibody clone in a different buffer formulation.

ICC/IF image of [ab155982](#) stained CaCo2 cells. The cells were 4% formaldehyde fixed (10 min) and then incubated in 1%BSA / 10% normal goat serum / 0.3M glycine in 0.1% PBS-Tween for 1h to permeabilise the cells and block non-specific protein-protein interactions. The cells were then incubated with the antibody [ab155982](#) at 10µg/ml overnight at +4°C. The secondary antibody (green) was DyLight® 488 goat anti- rabbit ([ab96899](#)) IgG (H+L) used at a 1/250 dilution for 1h. Alexa Fluor® 594 WGA was used to label plasma membranes (red) at a 1/200 dilution for 1h. DAPI was used to stain the cell nuclei (blue) at a concentration of 1.43µM.

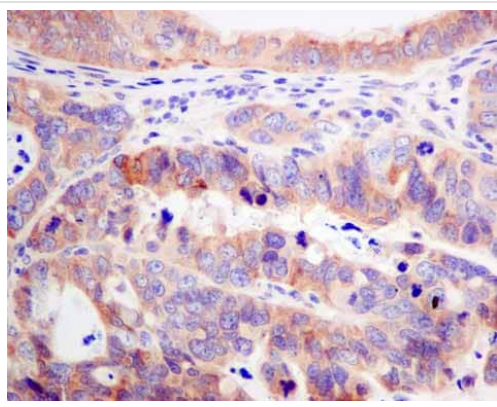


Immunohistochemistry (Formalin/PFA-fixed paraffin-embedded sections) - Anti-ARL 1 antibody [EPR10595] - BSA and Azide free (ab249227)

This data was developed using [ab155982](#), the same antibody clone in a different buffer formulation.

[ab155982](#) showing +ve staining in Human normal prostate.

Perform heat mediated antigen retrieval before commencing with IHC staining protocol.

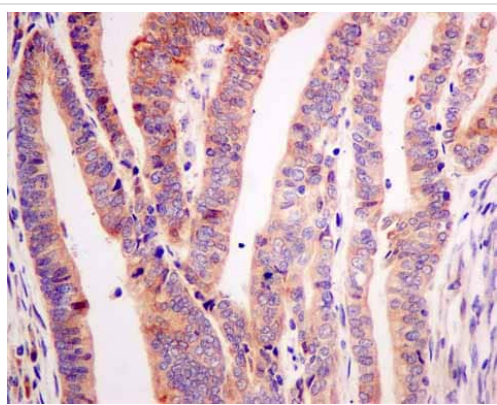


Immunohistochemistry (Formalin/PFA-fixed paraffin-embedded sections) - Anti-ARL 1 antibody [EPR10595] - BSA and Azide free (ab249227)

This data was developed using [ab155982](#), the same antibody clone in a different buffer formulation.

[ab155982](#) showing +ve staining in Human gastric adenocarcinoma.

Perform heat mediated antigen retrieval before commencing with IHC staining protocol.

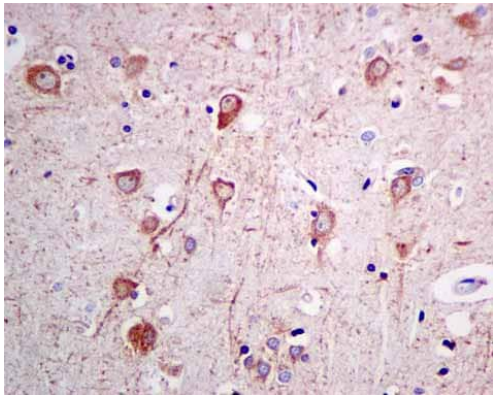


Immunohistochemistry (Formalin/PFA-fixed paraffin-embedded sections) - Anti-ARL 1 antibody [EPR10595] - BSA and Azide free (ab249227)

This data was developed using [ab155982](#), the same antibody clone in a different buffer formulation.

[ab155982](#) showing +ve staining in Human endometrial carcinoma.

Perform heat mediated antigen retrieval before commencing with IHC staining protocol.

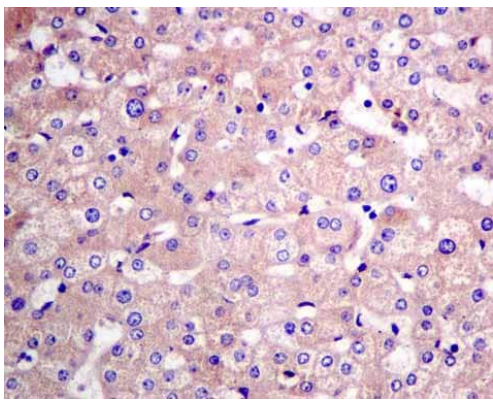


Immunohistochemistry (Formalin/PFA-fixed paraffin-embedded sections) - Anti-ARL 1 antibody [EPR10595] - BSA and Azide free (ab249227)

This data was developed using [ab155982](#), the same antibody clone in a different buffer formulation.

[ab155982](#) showing +ve staining in Human normal brain.

Perform heat mediated antigen retrieval before commencing with IHC staining protocol.

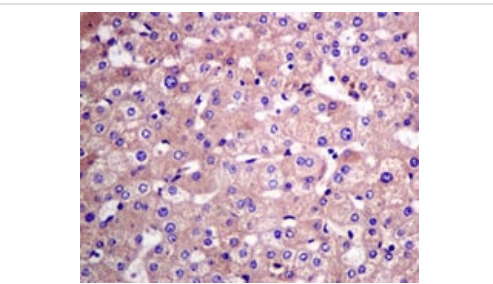


Immunohistochemistry (Formalin/PFA-fixed paraffin-embedded sections) - Anti-ARL 1 antibody [EPR10595] - BSA and Azide free (ab249227)

This data was developed using [ab155982](#), the same antibody clone in a different buffer formulation.

[ab155982](#) showing +ve staining in Human normal liver.

Perform heat mediated antigen retrieval before commencing with IHC staining protocol.



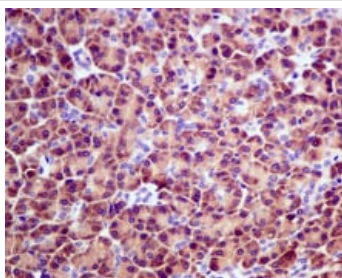
Immunohistochemistry (Formalin/PFA-fixed paraffin-embedded sections) - Anti-ARL 1 antibody [EPR10595] - BSA and Azide free (ab249227)

This data was developed using [ab155982](#), the same antibody clone in a different buffer formulation.

Immunohistochemical analysis of paraffin-embedded Human liver tissue labeling ARL 1 with [ab155982](#) at 1/50 dilution.

Perform heat mediated antigen retrieval before commencing with IHC staining protocol.





Immunohistochemistry (Formalin/PFA-fixed paraffin-embedded sections) - Anti-ARL 1 antibody [EPR10595] - BSA and Azide free (ab249227)

This data was developed using [ab155982](#), the same antibody clone in a different buffer formulation.

Immunohistochemical analysis of formalin-fixed, paraffin-embedded Human pancreas tissue labeling ARL 1 with [ab155982](#) at 1/50 dilution

Perform heat mediated antigen retrieval before commencing with IHC staining protocol.

### Why choose a recombinant antibody?



**Research with confidence**  
Consistent and reproducible results



**Long-term and scalable supply**  
Recombinant technology



**Success from the first experiment**  
Confirmed specificity



**Ethical standards compliant**  
Animal-free production

Anti-ARL 1 antibody [EPR10595] - BSA and Azide free (ab249227)

**Please note:** All products are "FOR RESEARCH USE ONLY. NOT FOR USE IN DIAGNOSTIC PROCEDURES"

### Our Abpromise to you: Quality guaranteed and expert technical support

- Replacement or refund for products not performing as stated on the datasheet
- Valid for 12 months from date of delivery
- Response to your inquiry within 24 hours
- We provide support in Chinese, English, French, German, Japanese and Spanish
- Extensive multi-media technical resources to help you
- We investigate all quality concerns to ensure our products perform to the highest standards

If the product does not perform as described on this datasheet, we will offer a refund or replacement. For full details of the Abpromise, please visit <https://www.abcam.com/abpromise> or contact our technical team.

## Terms and conditions

---

- Guarantee only valid for products bought direct from Abcam or one of our authorized distributors