

Product datasheet

Anti-ARL15 antibody [EPR12591] ab178425

Recombinant RabMAb

4 Images

Overview

Product name	Anti-ARL15 antibody [EPR12591]
Description	Rabbit monoclonal [EPR12591] to ARL15
Host species	Rabbit
Tested applications	Suitable for: WB, ICC/IF, IP Unsuitable for: Flow Cyt or IHC-P
Species reactivity	Reacts with: Mouse, Rat, Human
Immunogen	Recombinant fragment within Human ARL15. The exact sequence is proprietary. Database link: Q9NXU5
Positive control	K562, Human fetal kidney and fetal brain lysates; K562 cells.
General notes	

This product is a recombinant monoclonal antibody, which offers several advantages including:

- High batch-to-batch consistency and reproducibility
- Improved sensitivity and specificity
- Long-term security of supply
- Animal-free production

For more information [see here](#).

Our RabMAb[®] technology is a patented hybridoma-based technology for making rabbit monoclonal antibodies. For details on our patents, please refer to [RabMAb[®] patents](#).

We are constantly working hard to ensure we provide our customers with best in class antibodies. As a result of this work we are pleased to now offer this antibody in purified format. We are in the process of updating our datasheets. The purified format is designated 'PUR' on our product labels. If you have any questions regarding this update, please contact our Scientific Support team.

Reproducibility is key to advancing scientific discovery and accelerating scientists' next breakthrough.

Abcam is leading the way with our range of recombinant antibodies, knockout-validated antibodies and knockout cell lines, all of which support improved reproducibility.

We are also planning to innovate the way in which we present recommended applications and species on our product datasheets, so that only applications & species that have been tested in

our own labs, our suppliers or by selected trusted collaborators are covered by our Abpromise™ guarantee.

In preparation for this, we have started to update the applications & species that this product is Abpromise guaranteed for.

We are also updating the applications & species that this product has been “predicted to work with,” however this information is not covered by our Abpromise guarantee.

Applications & species from publications and Abreviews that have not been tested in our own labs or in those of our suppliers are not covered by the Abpromise guarantee.

Please check that this product meets your needs before purchasing. If you have any questions, special requirements or concerns, please send us an inquiry and/or contact our Support team ahead of purchase. Recommended alternatives for this product can be found below, as well as customer reviews and Q&As.

Properties

Form	Liquid
Storage instructions	Shipped at 4°C. Store at +4°C short term (1-2 weeks). Upon delivery aliquot. Store at -20°C long term. Avoid freeze / thaw cycle.
Storage buffer	pH: 7.20 Preservative: 0.01% Sodium azide Constituents: 59% PBS, 40% Glycerol (glycerin, glycerine), 0.5% BSA
Purity	Protein A purified
Clonality	Monoclonal
Clone number	EPR12591
Isotype	IgG

Applications

Our [Abpromise guarantee](#) covers the use of **ab178425** in the following tested applications.

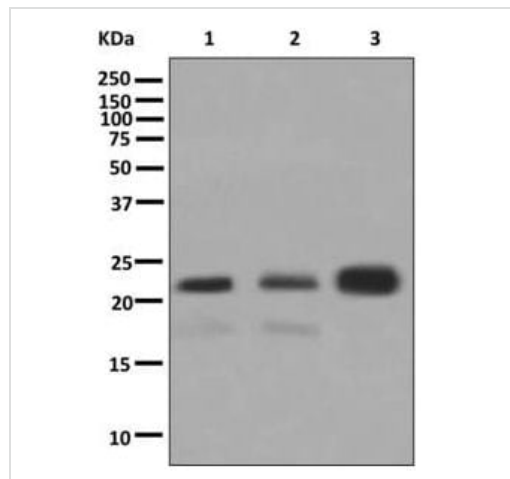
The application notes include recommended starting dilutions; optimal dilutions/concentrations should be determined by the end user.

Application	Abreviews	Notes
WB		1/1000 - 1/10000. Predicted molecular weight: 23 kDa.
ICC/IF		1/50 - 1/100.
IP		1/10 - 1/100.

Application notes Is unsuitable for Flow Cyt or IHC-P.

Target

Sequence similarities Belongs to the small GTPase superfamily. Arf family.



Western blot - Anti-ARL15 antibody [EPR12591] (ab178425)

All lanes : Anti-ARL15 antibody [EPR12591] (ab178425) at 1/1000 dilution

Lane 1 : Human fetal kidney lysate

Lane 2 : K562 lysate

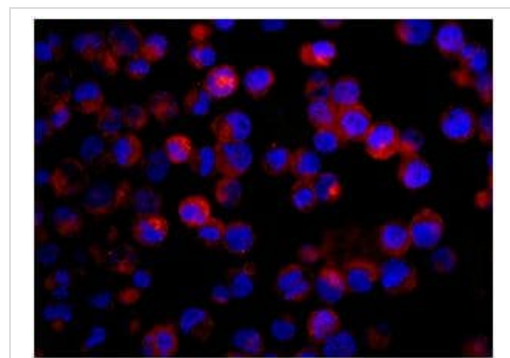
Lane 3 : Human fetal brain lysate

Lysates/proteins at 10 µg per lane.

Secondary

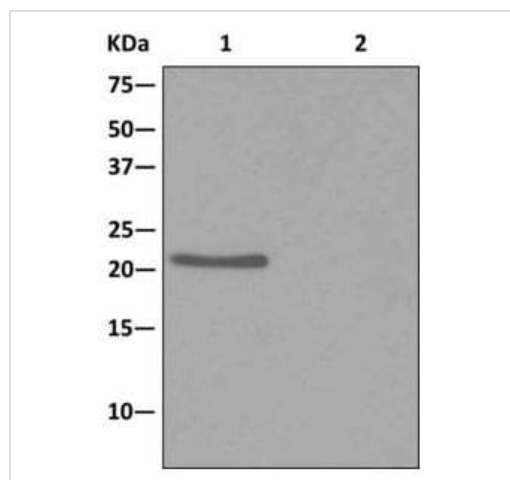
All lanes : Goat anti-rabbit HRP at 1/2000 dilution

Predicted band size: 23 kDa



Immunocytochemistry/ Immunofluorescence - Anti-ARL15 antibody [EPR12591] (ab178425)

Immunofluorescent analysis of K562 cells labeling ARL15 with ab178425 at 1/50 dilution (red). DAPI nuclear staining (blue).



Immunoprecipitation - Anti-ARL15 antibody [EPR12591] (ab178425)

Western blot analysis on immunoprecipitation pellet from (1) Human fetal kidney lysate or (2) 1X PBS (negative control) immunoprecipitated using ab178425 at 1/10 dilution. Detection utilized HRP-conjugated anti-rabbit IgG which preferentially detects the non-reduced form of rabbit IgG.

Why choose a recombinant antibody?



Research with confidence
Consistent and reproducible results



Long-term and scalable supply
Recombinant technology



Success from the first experiment
Confirmed specificity



Ethical standards compliant
Animal-free production

Anti-ARL15 antibody [EPR12591] (ab178425)

Please note: All products are "FOR RESEARCH USE ONLY. NOT FOR USE IN DIAGNOSTIC PROCEDURES"

Our Abpromise to you: Quality guaranteed and expert technical support

- Replacement or refund for products not performing as stated on the datasheet
- Valid for 12 months from date of delivery
- Response to your inquiry within 24 hours
- We provide support in Chinese, English, French, German, Japanese and Spanish
- Extensive multi-media technical resources to help you
- We investigate all quality concerns to ensure our products perform to the highest standards

If the product does not perform as described on this datasheet, we will offer a refund or replacement. For full details of the Abpromise, please visit <https://www.abcam.com/abpromise> or contact our technical team.

Terms and conditions

- Guarantee only valid for products bought direct from Abcam or one of our authorized distributors