

Product datasheet

Anti-Arrestin C antibody - C-terminal ab189437

2 Images

Overview

Product name	Anti-Arrestin C antibody - C-terminal
Description	Rabbit polyclonal to Arrestin C - C-terminal
Host species	Rabbit
Tested applications	Suitable for: WB, IHC-P
Species reactivity	Reacts with: Human
Immunogen	Synthetic peptide within Human Arrestin C aa 300 to the C-terminus (C terminal). The exact immunogen sequence used to generate this antibody is proprietary information. If additional detail on the immunogen is needed to determine the suitability of the antibody for your needs, please contact our Scientific Support team to discuss your requirements. NP_004303.2. Database link: P36575

 [Run BLAST with](#)

 [Run BLAST with](#)

Positive control Human eye, retina tissue; LOVO cell extracts.

General notes The Life Science industry has been in the grips of a reproducibility crisis for a number of years. Abcam is leading the way in addressing this with our range of recombinant monoclonal antibodies and knockout edited cell lines for gold-standard validation. Please check that this product meets your needs before purchasing.

If you have any questions, special requirements or concerns, please send us an inquiry and/or contact our Support team ahead of purchase. Recommended alternatives for this product can be found below, along with publications, customer reviews and Q&As

Properties

Form	Liquid
Storage instructions	Shipped at 4°C. Store at +4°C short term (1-2 weeks). Upon delivery aliquot. Store at -20°C long term. Avoid freeze / thaw cycle.
Storage buffer	pH: 7.40 Preservative: 0.02% Sodium azide Constituents: 49% PBS, 0.87% Sodium chloride, 50% Glycerol (glycerin, glycerine)
Purity	PBS (without Mg ²⁺ , Ca ²⁺) Immunogen affinity purified

Clonality	Polyclonal
Isotype	IgG

Applications

The Abpromise guarantee Our [Abpromise guarantee](#) covers the use of ab189437 in the following tested applications. The application notes include recommended starting dilutions; optimal dilutions/concentrations should be determined by the end user.

Application	Abreviews	Notes
WB		1/500 - 1/1000. Predicted molecular weight: 43 kDa.
IHC-P		Use a concentration of 20 µg/ml.

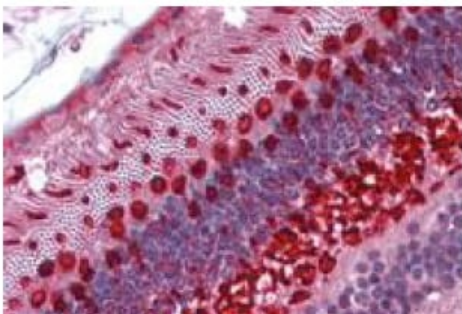
Target

Function May play a role in an as yet undefined retina-specific signal transduction. Could binds to photoactivated-phosphorylated red/green opsins.

Tissue specificity Inner and outer segments, and the inner plexiform regions of the retina.

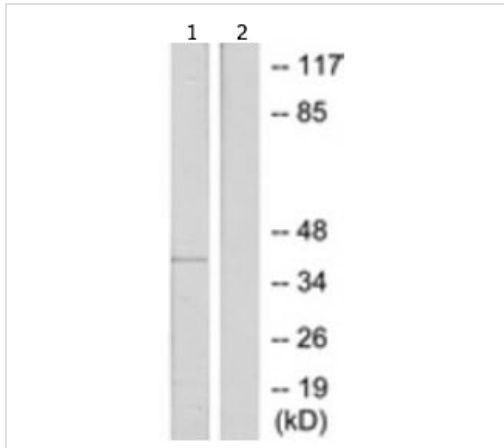
Sequence similarities Belongs to the arrestin family.

Images



Immunohistochemical analysis of formalin-fixed, paraffin-embedded Human eye, retina tissue labeling Arrestin C with ab189437 at 20 µg/ml.

Immunohistochemistry (Formalin/PFA-fixed paraffin-embedded sections) - Anti-Arrestin C antibody - C-terminal (ab189437)



Western blot - Anti-Arrestin C antibody - C-terminal (ab189437)

All lanes : Anti-Arrestin C antibody - C-terminal (ab189437) at 1/500 dilution

Lane 1 : LOVO cell extract

Lane 2 : LOVO cell extract with immunizing peptide

Predicted band size: 43 kDa

Please note: All products are "FOR RESEARCH USE ONLY. NOT FOR USE IN DIAGNOSTIC PROCEDURES"

Our Abpromise to you: Quality guaranteed and expert technical support

- Replacement or refund for products not performing as stated on the datasheet
- Valid for 12 months from date of delivery
- Response to your inquiry within 24 hours
- We provide support in Chinese, English, French, German, Japanese and Spanish
- Extensive multi-media technical resources to help you
- We investigate all quality concerns to ensure our products perform to the highest standards

If the product does not perform as described on this datasheet, we will offer a refund or replacement. For full details of the Abpromise, please visit <https://www.abcam.com/abpromise> or contact our technical team.

Terms and conditions

- Guarantee only valid for products bought direct from Abcam or one of our authorized distributors