

Product datasheet

Anti-ARTS1/ERAP1 antibody - C-terminal ab181390

3 Images

Overview

Product name	Anti-ARTS1/ERAP1 antibody - C-terminal
Description	Rabbit polyclonal to ARTS1/ERAP1 - C-terminal
Host species	Rabbit
Specificity	At least two isoforms of ARTS1/ERAP1 are known to exist; ab181390 will detect both isoforms. ab181390 is predicted to not cross-react with ERAP2.
Tested applications	Suitable for: IHC-P, WB, ICC/IF
Species reactivity	Reacts with: Mouse, Human
Immunogen	Synthetic peptide within Human ARTS1/ERAP1 (C terminal). The exact sequence is proprietary. 19 amino acids. Database link: Q9NZ08
Positive control	SK-N-SH cell lysate. Mouse brain tissue.
General notes	This product was previously labelled as ARTS1

Reproducibility is key to advancing scientific discovery and accelerating scientists' next breakthrough.

Abcam is leading the way with our range of recombinant antibodies, knockout-validated antibodies and knockout cell lines, all of which support improved reproducibility.

We are also planning to innovate the way in which we present recommended applications and species on our product datasheets, so that only applications & species that have been tested in our own labs, our suppliers or by selected trusted collaborators are covered by our Abpromise™ guarantee.

In preparation for this, we have started to update the applications & species that this product is Abpromise guaranteed for.

We are also updating the applications & species that this product has been "predicted to work with," however this information is not covered by our Abpromise guarantee.

Applications & species from publications and Abreviews that have not been tested in our own labs or in those of our suppliers are not covered by the Abpromise guarantee.

Please check that this product meets your needs before purchasing. If you have any questions, special requirements or concerns, please send us an inquiry and/or contact our Support team ahead of purchase. Recommended alternatives for this product can be found below, as well as customer reviews and Q&As.

Properties

Form	Liquid
Storage instructions	Shipped at 4°C. Store at +4°C short term (1-2 weeks). Upon delivery aliquot. Store at -20°C long term. Avoid freeze / thaw cycle.
Storage buffer	pH: 7.2 Preservative: 0.02% Sodium azide Constituent: 99% PBS
Purity	Immunogen affinity purified
Clonality	Polyclonal
Isotype	IgG

Applications

Our [Abpromise guarantee](#) covers the use of **ab181390** in the following tested applications.

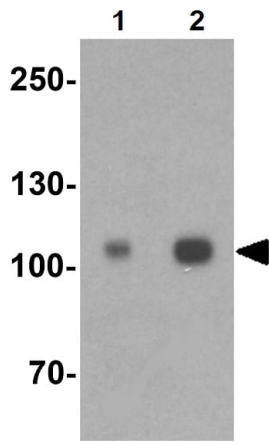
The application notes include recommended starting dilutions; optimal dilutions/concentrations should be determined by the end user.

Application	Abreviews	Notes
IHC-P		Use a concentration of 5 µg/ml.
WB		Use a concentration of 1 - 2 µg/ml. Detects a band of approximately 105 kDa (predicted molecular weight: 107 kDa).
ICC/IF		Use a concentration of 20 µg/ml.

Target

Function	Aminopeptidase that plays a central role in peptide trimming, a step required for the generation of most HLA class I-binding peptides. Peptide trimming is essential to customize longer precursor peptides to fit them to the correct length required for presentation on MHC class I molecules. Strongly prefers substrates 9-16 residues long. Rapidly degrades 13-mer to a 9-mer and then stops. Preferentially hydrolyzes the residue Leu and peptides with a hydrophobic C-terminus, while it has weak activity toward peptides with charged C-terminus. May play a role in the inactivation of peptide hormones. May be involved in the regulation of blood pressure through the inactivation of angiotensin II and/or the generation of bradykinin in the kidney.
Tissue specificity	Ubiquitous.
Sequence similarities	Belongs to the peptidase M1 family.
Post-translational modifications	N-glycosylated.
Cellular localization	Endoplasmic reticulum membrane.

Images



Western blot - Anti-ARTS1/ERAP1 antibody - C-terminal (ab181390)

Lane 1 : Anti-ARTS1/ERAP1 antibody - C-terminal (ab181390) at 1 µg/ml

Lane 2 : Anti-ARTS1/ERAP1 antibody - C-terminal (ab181390) at 2 µg/ml

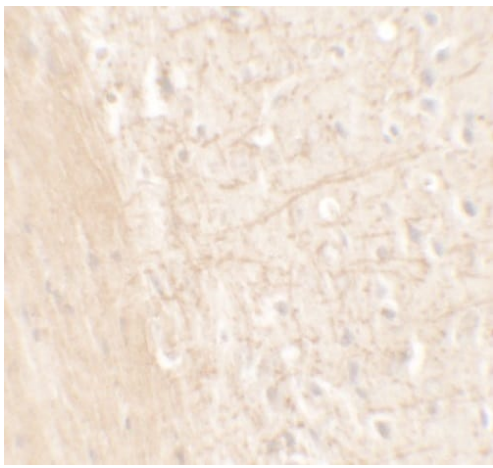
All lanes : SK-N-SH whole cell lysate

Lysates/proteins at 15 µg per lane.

Predicted band size: 107 kDa

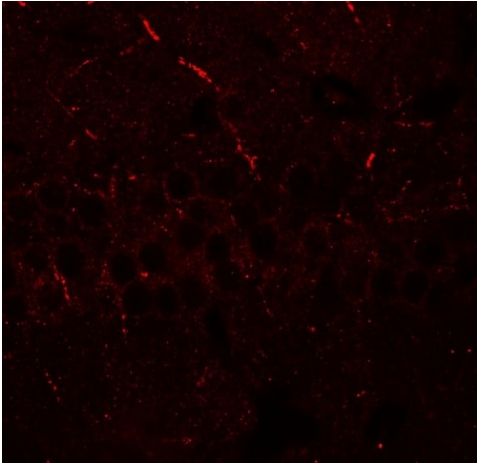
Observed band size: 105 kDa

[why is the actual band size different from the predicted?](#)



Immunohistochemical analysis of mouse brain tissue, staining ARTS1/ERAP1 with ab181390 at 5 µg/ml.

Immunohistochemistry (Formalin/PFA-fixed paraffin-embedded sections) - Anti-ARTS1/ERAP1 antibody - C-terminal (ab181390)



Immunofluorescence of mouse brain tissue, staining ARTS1/ERAP1 with ab181390 at 20 µg/mL.

Immunocytochemistry/ Immunofluorescence - Anti-ARTS1/ERAP1 antibody - C-terminal (ab181390)

Please note: All products are "FOR RESEARCH USE ONLY. NOT FOR USE IN DIAGNOSTIC PROCEDURES"

Our Abpromise to you: Quality guaranteed and expert technical support

- Replacement or refund for products not performing as stated on the datasheet
- Valid for 12 months from date of delivery
- Response to your inquiry within 24 hours
- We provide support in Chinese, English, French, German, Japanese and Spanish
- Extensive multi-media technical resources to help you
- We investigate all quality concerns to ensure our products perform to the highest standards

If the product does not perform as described on this datasheet, we will offer a refund or replacement. For full details of the Abpromise, please visit <https://www.abcam.com/abpromise> or contact our technical team.

Terms and conditions

- Guarantee only valid for products bought direct from Abcam or one of our authorized distributors