

## Product datasheet

# Anti-ASAH2 antibody ab63804

[1 References](#) [1 Image](#)

### Overview

---

<b>Product name</b>	Anti-ASAH2 antibody
<b>Description</b>	Rabbit polyclonal to ASAH2
<b>Host species</b>	Rabbit
<b>Tested applications</b>	<b>Suitable for:</b> WB
<b>Species reactivity</b>	<b>Reacts with:</b> Mouse, Rat, Human
<b>Immunogen</b>	Synthetic peptide surrounding amino acid 741 of human ASAH2
<b>Positive control</b>	Jurkat cell lysate.
<b>General notes</b>	<p>Reproducibility is key to advancing scientific discovery and accelerating scientists' next breakthrough.</p> <p>Abcam is leading the way with our range of recombinant antibodies, knockout-validated antibodies and knockout cell lines, all of which support improved reproducibility.</p> <p>We are also planning to innovate the way in which we present recommended applications and species on our product datasheets, so that only applications &amp; species that have been tested in our own labs, our suppliers or by selected trusted collaborators are covered by our Abpromise™ guarantee.</p> <p>In preparation for this, we have started to update the applications &amp; species that this product is Abpromise guaranteed for.</p> <p>We are also updating the applications &amp; species that this product has been "predicted to work with," however this information is not covered by our Abpromise guarantee.</p> <p>Applications &amp; species from publications and Abreviews that have not been tested in our own labs or in those of our suppliers are not covered by the Abpromise guarantee.</p> <p>Please check that this product meets your needs before purchasing. If you have any questions, special requirements or concerns, please send us an inquiry and/or contact our Support team ahead of purchase. Recommended alternatives for this product can be found below, as well as customer reviews and Q&amp;As.</p>

### Properties

---

<b>Form</b>	Liquid
<b>Storage instructions</b>	Shipped at 4°C. Upon delivery aliquot and store at -20°C or -80°C. Avoid repeated freeze / thaw cycles.

<b>Storage buffer</b>	pH: 7.20 Preservative: 0.01% Thimerosal (merthiolate) Constituents: PBS, 30% Glycerol, 0.5% BSA
<b>Purity</b>	Immunogen affinity purified
<b>Clonality</b>	Polyclonal
<b>Isotype</b>	IgG

## Applications

Our [Abpromise guarantee](#) covers the use of **ab63804** in the following tested applications.

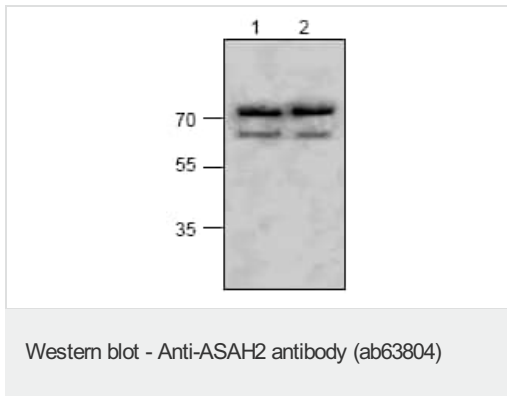
The application notes include recommended starting dilutions; optimal dilutions/concentrations should be determined by the end user.

Application	Abreviews	Notes
WB		Use a concentration of 0.5 - 4 µg/ml. Detects a band of approximately 86 kDa (predicted molecular weight: 86 kDa).

## Target

<b>Function</b>	Hydrolyzes the sphingolipid ceramide into sphingosine and free fatty acid at an optimal pH of 6.5-8.5. Acts as a key regulator of sphingolipid signaling metabolites by generating sphingosine at the cell surface. Acts as a repressor of apoptosis both by reducing C16-ceramide, thereby preventing ceramide-induced apoptosis, and generating sphingosine, a precursor of the antiapoptotic factor sphingosine 1-phosphate. Probably involved in the digestion of dietary sphingolipids in intestine by acting as a key enzyme for the catabolism of dietary sphingolipids and regulating the levels of bioactive sphingolipid metabolites in the intestinal tract.
<b>Tissue specificity</b>	Primarily expressed in the intestine (PubMed:17334805). Ubiquitously expressed with higher levels in kidney, skeletal muscle and heart (PubMed:10781606). According to PubMed:17334805, ubiquitous expression attributed to ASAH2 may be actually that of the paralog ASAH2B.
<b>Sequence similarities</b>	Belongs to the neutral ceramidase family.
<b>Post-translational modifications</b>	N-glycosylated. Required for enzyme activity. O-glycosylated. Required to retain it as a type II membrane protein at the cell surface. Phosphorylated. May prevent ubiquitination and subsequent degradation. Ubiquitinated, leading to its degradation by the proteasome. Ubiquitination is triggered by nitric oxid.
<b>Cellular localization</b>	Cell membrane. The neutral ceramidase soluble form is a secreted protein. According to PubMed:10781606, it is mitochondrial. However, they used a shorter form in its N-terminus, which may explain this localization which probably does not exist in vivo.

## Images



**All lanes :** Anti-ASA2 antibody (ab63804) at 4 µg/ml

**All lanes :** Jurkat cell lysate

**Predicted band size:** 86 kDa

**Observed band size:** 86 kDa

**Additional bands at:** 68 kDa. We are unsure as to the identity of these extra bands.

**Please note:** All products are "FOR RESEARCH USE ONLY. NOT FOR USE IN DIAGNOSTIC PROCEDURES"

### Our Abpromise to you: Quality guaranteed and expert technical support

---

- Replacement or refund for products not performing as stated on the datasheet
- Valid for 12 months from date of delivery
- Response to your inquiry within 24 hours
- We provide support in Chinese, English, French, German, Japanese and Spanish
- Extensive multi-media technical resources to help you
- We investigate all quality concerns to ensure our products perform to the highest standards

If the product does not perform as described on this datasheet, we will offer a refund or replacement. For full details of the Abpromise, please visit <https://www.abcam.com/abpromise> or contact our technical team.

### Terms and conditions

---

- Guarantee only valid for products bought direct from Abcam or one of our authorized distributors