


Product datasheet

Anti-ASAM antibody ab171552

2 Images

Overview

<b>Product name</b>	Anti-ASAM antibody
<b>Description</b>	Rabbit polyclonal to ASAM
<b>Host species</b>	Rabbit
<b>Tested applications</b>	<b>Suitable for:</b> WB, IHC-P
<b>Species reactivity</b>	<b>Reacts with:</b> Human <b>Predicted to work with:</b> Mouse, Rat 
<b>Immunogen</b>	Synthetic peptide within Human ASAM aa 80-111 (internal sequence) conjugated to Keyhole Limpet Haemocyanin (KLH). The exact sequence is proprietary. Database link: <a href="#">Q9H6B4</a>
<b>Positive control</b>	HepG2 cell lysate, Human skeletal muscle.

Properties

<b>Form</b>	Liquid
<b>Storage instructions</b>	Shipped at 4°C. Store at +4°C short term (1-2 weeks). Upon delivery aliquot. Store at -20°C long term. Avoid freeze / thaw cycle.
<b>Storage buffer</b>	Preservative: 0.09% Sodium azide Constituent: 99% PBS
<b>Purity</b>	Immunogen affinity purified
<b>Clonality</b>	Polyclonal
<b>Isotype</b>	IgG

Applications

Our [Abpromise guarantee](#) covers the use of **ab171552** in the following tested applications.

The application notes include recommended starting dilutions; optimal dilutions/concentrations should be determined by the end user.

Application	Abreviews	Notes
WB		1/100 - 1/500. Predicted molecular weight: 41 kDa.

Application	Abreviews	Notes
IHC-P		1/10 - 1/50. Perform heat mediated antigen retrieval with citrate buffer pH 6 before commencing with IHC staining protocol.

## Target

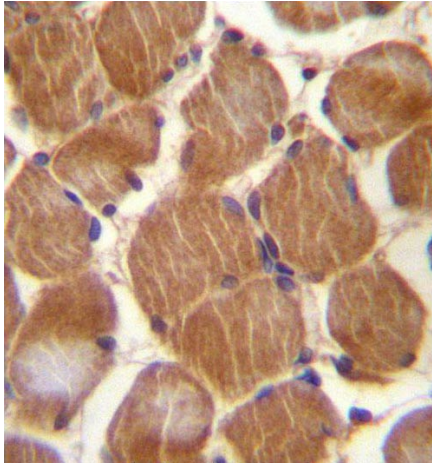
<b>Function</b>	May be involved in the cell-cell adhesion. May play a role in adipocyte differentiation and development of obesity.
<b>Tissue specificity</b>	Predominantly expressed in epithelial cells within different tissues and in the white adipose tissue. Expressed at high levels in small intestine and placenta, at intermediate levels in the heart, skeletal muscle, colon, spleen, kidney and lung and at low levels in the liver and peripheral blood leukocytes.
<b>Sequence similarities</b>	Contains 2 Ig-like C2-type (immunoglobulin-like) domains.
<b>Cellular localization</b>	Cell junction > tight junction. Cell membrane.

## Images



Anti-ASAM antibody (ab171552) at 1/100 dilution + HepG2 cell lysate at 35 µg

**Predicted band size:** 41 kDa



Immunohistochemical analysis of paraffin-embedded Human skeletal muscle tissue, labeling ASAM with ab171552 at 1/10 dilution followed by peroxidase conjugation of the secondary antibody and DAB staining.

Immunohistochemistry (Formalin/PFA-fixed paraffin-embedded sections) - Anti-ASAM antibody (ab171552)

**Please note:** All products are "FOR RESEARCH USE ONLY. NOT FOR USE IN DIAGNOSTIC PROCEDURES"

### **Our Abpromise to you: Quality guaranteed and expert technical support**

---

- Replacement or refund for products not performing as stated on the datasheet
- Valid for 12 months from date of delivery
- Response to your inquiry within 24 hours
- We provide support in Chinese, English, French, German, Japanese and Spanish
- Extensive multi-media technical resources to help you
- We investigate all quality concerns to ensure our products perform to the highest standards

If the product does not perform as described on this datasheet, we will offer a refund or replacement. For full details of the Abpromise, please visit <https://www.abcam.com/abpromise> or contact our technical team.

### **Terms and conditions**

---

- Guarantee only valid for products bought direct from Abcam or one of our authorized distributors