



Product datasheet

Anti-Asef2 antibody ab122701

1 References 2 Images

Overview

Product name	Anti-Asef2 antibody
Description	Rabbit polyclonal to Asef2
Host species	Rabbit
Tested applications	Suitable for: WB, ICC/IF
Species reactivity	Reacts with: Human
Immunogen	<p>Recombinant fragment corresponding to Human Asef2 aa 576-648. Sequence:</p> <p>NQKKLAMLNAQKAGHGKSKGYNRCPVAPPHQGLHPIHQR HITMPTSVPPQQ QVFGLAEPKRKSSLFWHTFNRLT</p> <p>Database link: Q96N96</p> <p style="text-align: right;">  Run BLAST with  Run BLAST with </p>
Positive control	ICC/IF: Human A-431 cells. WB: Human cell line HDLM-2.
General notes	<p>Previously labelled as SPATA13.</p> <p>Reproducibility is key to advancing scientific discovery and accelerating scientists' next breakthrough.</p> <p>Abcam is leading the way with our range of recombinant antibodies, knockout-validated antibodies and knockout cell lines, all of which support improved reproducibility.</p> <p>We are also planning to innovate the way in which we present recommended applications and species on our product datasheets, so that only applications & species that have been tested in our own labs, our suppliers or by selected trusted collaborators are covered by our Abpromise™ guarantee.</p> <p>In preparation for this, we have started to update the applications & species that this product is Abpromise guaranteed for.</p> <p>We are also updating the applications & species that this product has been “predicted to work with,” however this information is not covered by our Abpromise guarantee.</p> <p>Applications & species from publications and Abreviews that have not been tested in our own labs or in those of our suppliers are not covered by the Abpromise guarantee.</p> <p>Please check that this product meets your needs before purchasing. If you have any questions, special requirements or concerns, please send us an inquiry and/or contact our Support team ahead of purchase. Recommended alternatives for this product can be found below, as well as customer reviews and Q&As.</p>

Properties

Form	Liquid
Storage instructions	Shipped at 4°C. Upon delivery aliquot and store at -20°C. Avoid freeze / thaw cycles.
Storage buffer	pH: 7.20 Preservative: 0.02% Sodium azide Constituents: 40% Glycerol (glycerin, glycerine), 59% PBS
Purity	Immunogen affinity purified
Clonality	Polyclonal
Isotype	IgG

Applications

Our [Abpromise guarantee](#) covers the use of **ab122701** in the following tested applications.

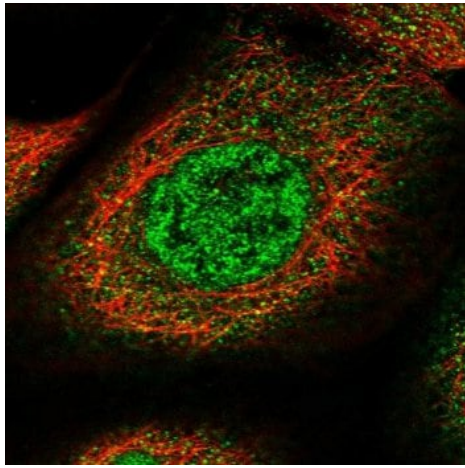
The application notes include recommended starting dilutions; optimal dilutions/concentrations should be determined by the end user.

Application	Abreviews	Notes
WB		Use a concentration of 0.04 - 0.4 µg/ml. Predicted molecular weight: 75 kDa.
ICC/IF		Use a concentration of 0.25 - 2 µg/ml.

Target

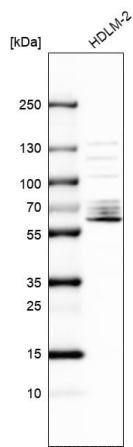
Function	Acts as guanine nucleotide exchange factor (GEF) for RHOA, RAC1 and CDC42 GTPases. Regulates cell migration and adhesion assembly and disassembly through a RAC1, PI3K, RHOA and AKT1-dependent mechanism. Increases both RAC1 and CDC42 activity, but decreases the amount of active RHOA. Required for MMP9 up-regulation via the JNK signaling pathway in colorectal tumor cells. Involved in tumor angiogenesis and may play a role in intestinal adenoma formation and tumor progression.
Tissue specificity	Expressed at high levels in the placenta, spleen and kidney, at moderate levels in lung, small intestine, liver, brain and heart, and at low levels in skeletal muscle. Expression is aberrantly enhanced in most colorectal tumors.
Sequence similarities	Contains 1 DH (DBL-homology) domain. Contains 1 PH domain. Contains 1 SH3 domain.
Domain	The C-terminal tail is required for its GEF activity.
Cellular localization	Cytoplasm. Cell projection > filopodium. Cell projection > lamellipodium. Cell projection > ruffle membrane. Accumulates in the lamellipodium and ruffle membrane in response to hepatocyte growth factor (HGF) treatment.

Images



Immunofluorescent staining of Human cell line A-431 using ab122701 at 4µg/ml. Antibody staining is shown in green.

Immunocytochemistry/ Immunofluorescence - Anti-Asef2 antibody (ab122701)



Anti-Asef2 antibody (ab122701) + human cell line HDLM-2.

Predicted band size: 75 kDa

Western blot - Anti-Asef2 antibody (ab122701)

Please note: All products are "FOR RESEARCH USE ONLY. NOT FOR USE IN DIAGNOSTIC PROCEDURES"

Our Abpromise to you: Quality guaranteed and expert technical support

- Replacement or refund for products not performing as stated on the datasheet
- Valid for 12 months from date of delivery
- Response to your inquiry within 24 hours
- We provide support in Chinese, English, French, German, Japanese and Spanish
- Extensive multi-media technical resources to help you
- We investigate all quality concerns to ensure our products perform to the highest standards

If the product does not perform as described on this datasheet, we will offer a refund or replacement. For full details of the Abpromise, please visit <https://www.abcam.com/abpromise> or contact our technical team.

Terms and conditions

- Guarantee only valid for products bought direct from Abcam or one of our authorized distributors